



Flat - Purpose Built (EPC Rating: B)

LAKESIDE DRIVE LONDON, NW10 7GZ

Per month

£2,000 Per

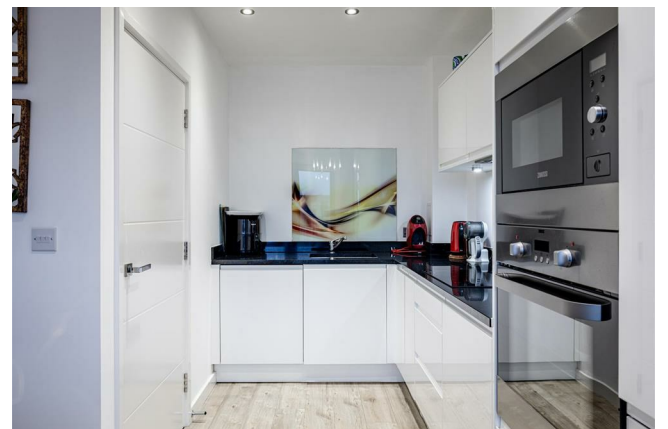
ALEXANDER STEER
Estate Agents



1 BEDROOM FLAT - PURPOSE BUILT LOCATED IN LONDON

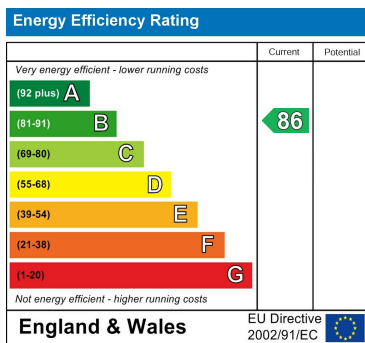
A stunning newly built one bedroom flat, dressed to a high standard and offers a spacious terrace overlooking communal gardens and a manmade lake.

Marquess House is newly built development located on a private residential road and offers easy access to the A40 and Park Royal Piccadilly Line. The development also has access to a large communal gardens as well as a grocery store, café and barber shop.



Council Tax Band

Energy Performance Graph



Call us on
0203 822 0111
hello@alexandersteer.co.uk
alexandersteer.co.uk



©ALEXANDERSTEERPROPERTY

Agents Note: Whilst every care has been taken to prepare these particulars, they are for guidance purposes only. All measurements are approximate and are for general guidance purposes only and whilst every care has been taken to ensure their accuracy, they should not be relied upon and potential buyers are advised to recheck the measurements.