



Tydeman Road, Bearsted, Maidstone, Kent, ME15 8LU
Offers In Excess Of £400,000



**** GUIDE PRICE £400,000 - £425,000 **** Discover a beautifully modernised and thoughtfully extended three/four bedroom end-of-terrace home, located in the sought-after Madginford development of Bearsted.

Upon entering, you are greeted by a spacious entrance hall that seamlessly flows into a dining area, leading to a generously sized sitting room adorned with floor to ceiling windows and a patio door that opens onto the private rear garden. The contemporary kitchen offers generous cupboard and worktop space, and there is also a versatile fourth bedroom that can serve as a study or TV room, along with a stylishly updated WC. Ascend to the first floor, where the landing provides access to three well-proportioned bedrooms and a beautifully refurbished bathroom with separate shower and bath.

Externally, a driveway leads to an integral garage and runs alongside a charming front garden with a lawn and shrub borders. The rear garden is predominantly laid to lawn, complemented by established shrubs and trees that ensure a high degree of privacy. Tenure: Freehold. Council Tax Band: D. EPC rating: C.



LOCATION

Madginford is served by a parade of shops, library and highly regarded junior/primary school, as well as a convenient bus service to Maidstone town centre, just 3 miles away. The centre of the picturesque village of Bearsted is also close by, with an excellent choice of pubs, cafe's, restaurants, church, doctors surgery and London line station, whilst also offering easy motorway access.

GROUND FLOOR

Entrance Hall

Dining Area

Sitting Room

Study/Bedroom Four

Kitchen

W.C.

FIRST FLOOR

Principal Bedroom

Bedroom Two

Bedroom Three

Bathroom

EXTERNALLY

Front Garden

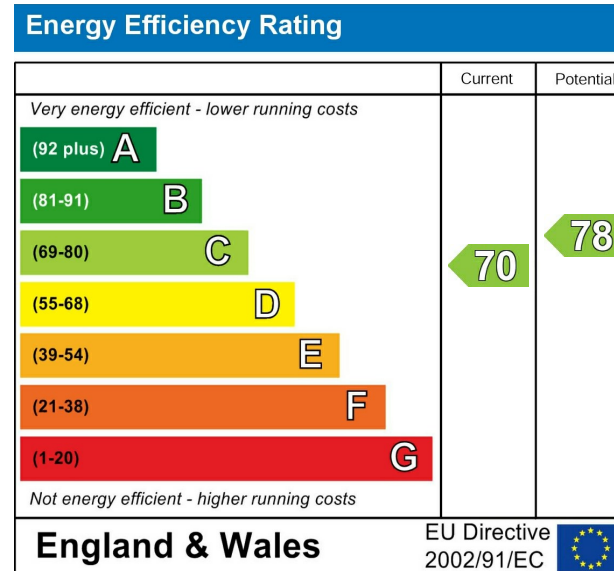
Driveway

Garage

Rear Garden

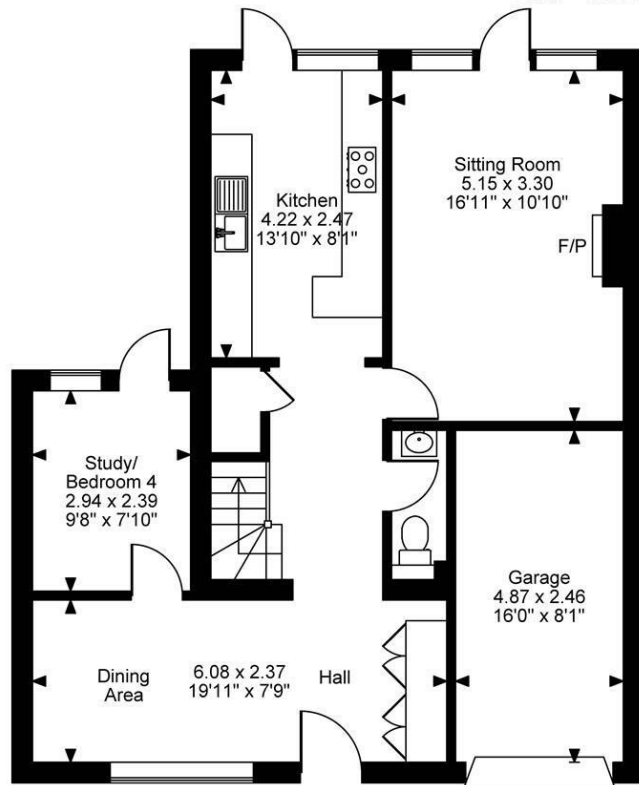
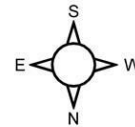
VIEWING

Strictly by arrangement with the Agent's Bearsted Office, 132 Ashford Road, Bearsted, Maidstone, Kent ME14 4LX. Tel: 01622 739574.

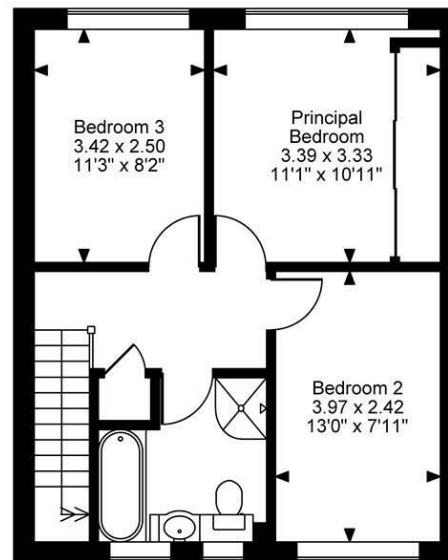


Page & Wells limited for themselves and for the vendors of this property whose agents they are give notice that: 1. These particulars do not constitute any part of, an offer or a contract. 2. All statements contained in these particulars as to this property are made without responsibility on the part of Page & Wells Limited or the Vendor. 3. None of the statements contained in these particulars as to the property is to be relied on as statements or representations of fact. 4. Any intending purchaser must satisfy himself by inspection or otherwise as to the correctness of each of the statements contained in these particulars. 5. The vendor does not make or give, and neither Page & Wells Limited nor any person in their employment has any authority to make or give any representation whatsoever in relation to this property. These particulars are supplied on the understanding that all negotiations are carried out throughout Page & Wells Limited. Properties with a reference prefixes EAA are those which Page & Wells Limited disclose an interest in accordance with the provisions of the Estates Agents Act 1979.

Tydeman Road, Bearsted, Maidstone
 Approximate Gross Internal Area
 Main House = 1142 Sq Ft/106 Sq M
 Garage = 129 Sq Ft/12 Sq M
 Total = 1271 Sq Ft/118 Sq M



Ground Floor



First Floor

FOR ILLUSTRATIVE PURPOSES ONLY - NOT TO SCALE

The position & size of doors, windows, appliances and other features are approximate only.
 © ehouse. Unauthorised reproduction prohibited. Drawing ref. dig/8666973/SS

