

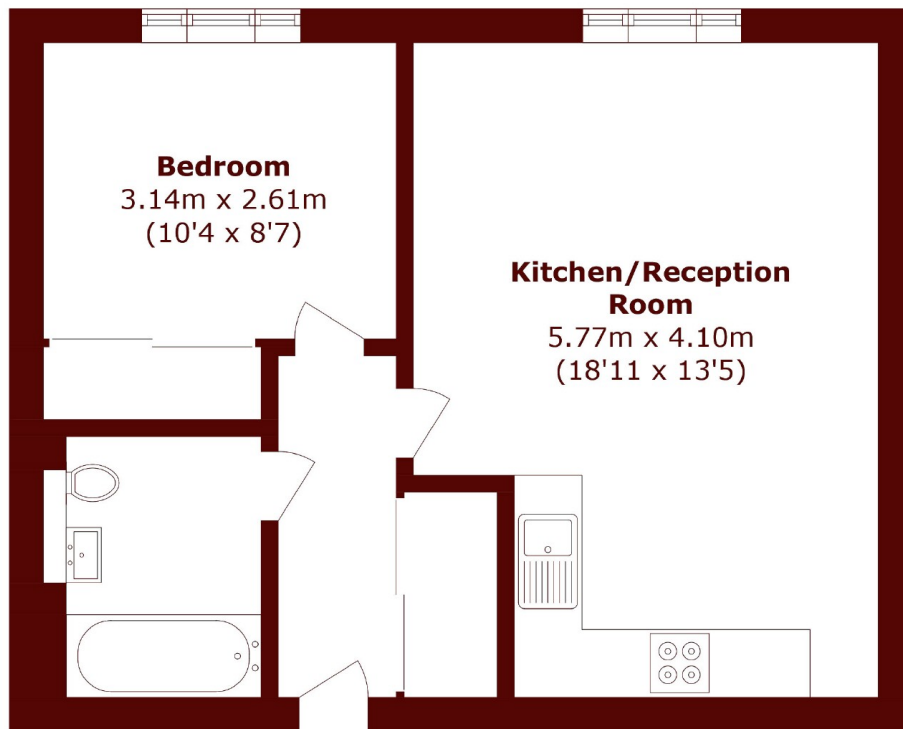


Bromyard Avenue, W3

£325,000



- Built In Wardrobe
- Private Gated Parking
- Open Plan Kitchen
- Utility Room
- 24hr Concierge
- Communal Gardens



Total area (approx.): 42.4 sq. m (456.3 sq. ft)

Marsh & Parsons Chiswick

34-38 Turnham Green
Terrace, London, W4 1QP
020 8994 2556