



## Barnsbury Grove, N7

£500,000

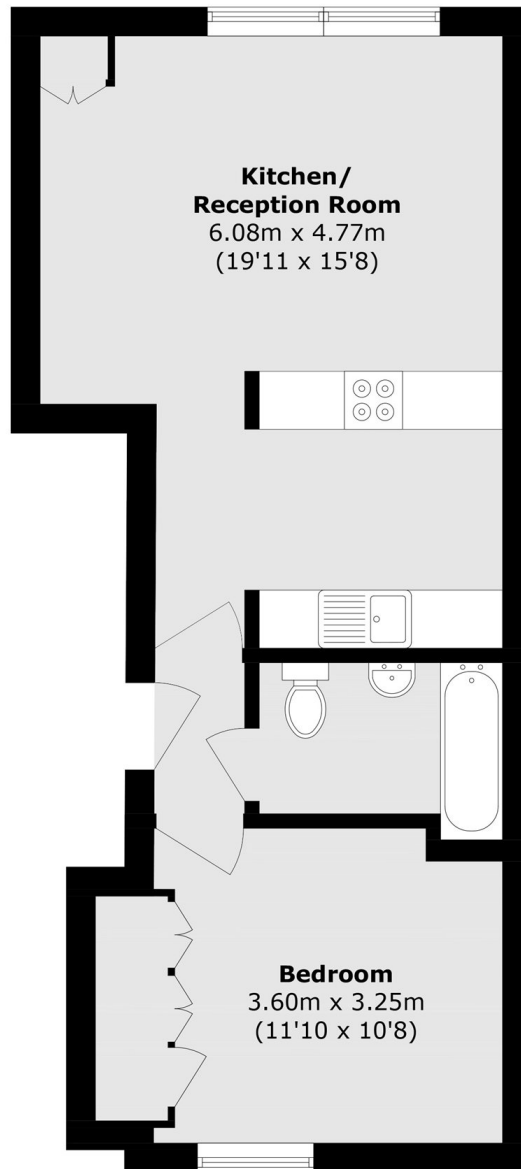
A ground floor one bedroom flat with direct access to a private garden. This apartment has modern fixtures and fittings throughout and an open-plan kitchen/diner.

This property is 0.5 miles from Highbury and Islington station (Victoria line) and 0.3 miles to Caledonian Road and Barnsbury overground, with the bars and restaurants of Upper Street just two streets away.

### Features

- Private Garden
- Open-Plan Kitchen
- One Bedroom
- Purpose built
- Ground Floor
- Modern

# Barnsbury Grove, London, N7



Total area (approx.): 46.5 sq. m (500.5 sq. ft)