

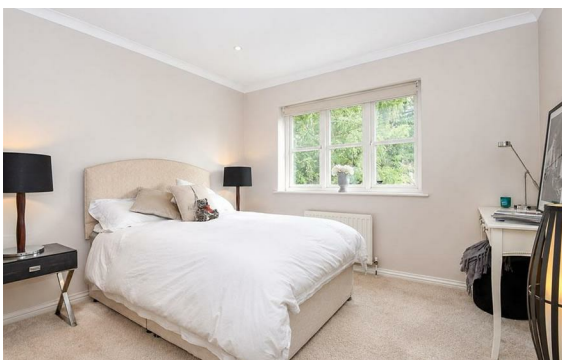


Melcombe Street, Marylebone, London, NW1

Rent £1,846 PCM

4 Bed | 2 Bath | 1 Reception

Please call us on 020 7724 2233 or email us info@newingtonstates.com to book a viewing.



60 Upper Montagu Street

London

W1H 1SN

020 7724 2233

info@newingtonestates.com

A well-presented four-bedroom apartment offering generous living space within a prestigious portered mansion block in Marylebone. Positioned on the 4th floor, the property features a large double reception room, a separate fitted kitchen, and four well-proportioned bedrooms. A bathroom, separate shower room, and guest WC provide practical accommodation, making the layout ideal for families or sharers.

Residents benefit from 24-hour porter service and access to impressive communal roof gardens. Ideally located close to Regent's Park and within easy reach of Baker Street Station.

EPC Rating: C

Energy Efficiency Rating: C

Agents Note: Whilst every care has been taken to prepare these particulars, they are for guidance purposes only. All measurements are approximate and are for general guidance purposes only and whilst every care has been taken to ensure their accuracy, they should not be relied upon and potential buyers/tenants are advised to recheck the measurements.

<http://www.newingtonestates.com>