



Kings Grove, SE15

£950,000

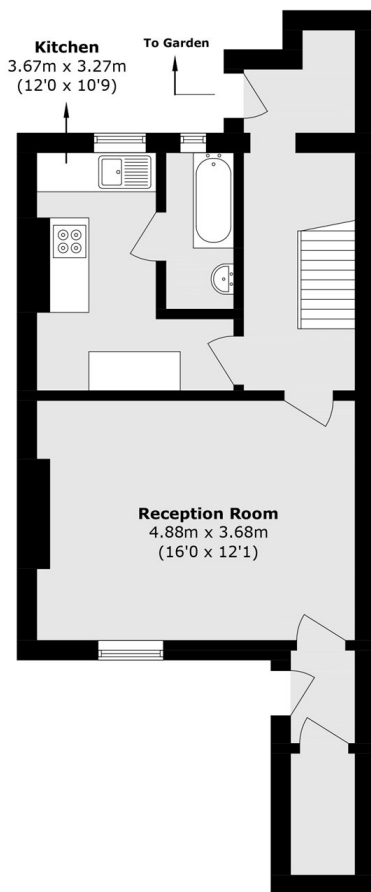
A substantial period house arranged over three floors, offering generous internal space, a truly impressive rear garden and excellent potential to extend and reconfigure, subject to the usual planning consents.

Kings Grove is a quiet residential street well placed for the open spaces of Peckham Rye and the amenities of Bellenden Road, with excellent transport links nearby including Peckham Rye and Queens Road stations.

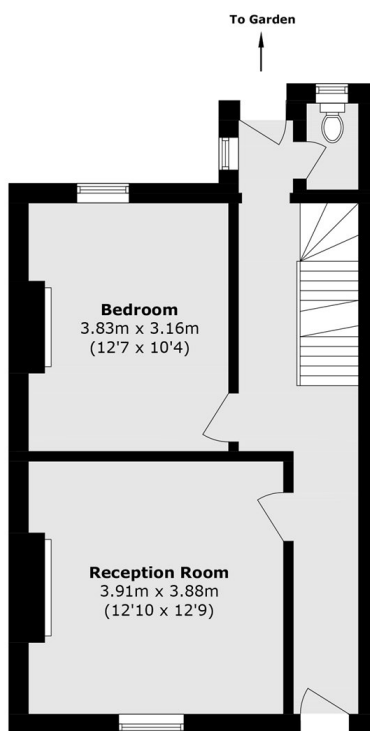
Features

- Three Double Bedrooms
- Two Receptions
- Glorious East Facing Garden
- No Trough Road
- Potential To Extend STPP
- Close To Queen's Road
- Peckham Station

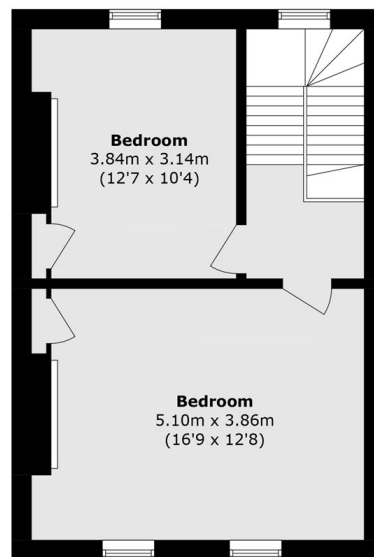
Kings Grove, London, SE15



Lower Ground Floor



Raised Ground Floor



First Floor

Total area (approx.): 124.9 sq. m (1344.4 sq. ft)