



HIGH STREET, SL1

£1,200 pcm

Experience modern living in this top-floor studio featuring a clever open-plan layout and large windows for exceptional natural light. This luxury space includes a designer kitchen and premium Galliard finishes.

- Designer Open-Plan Kitchen
- Exceptional Natural Light
- Slough Central Location
- 0.4 Miles to Station

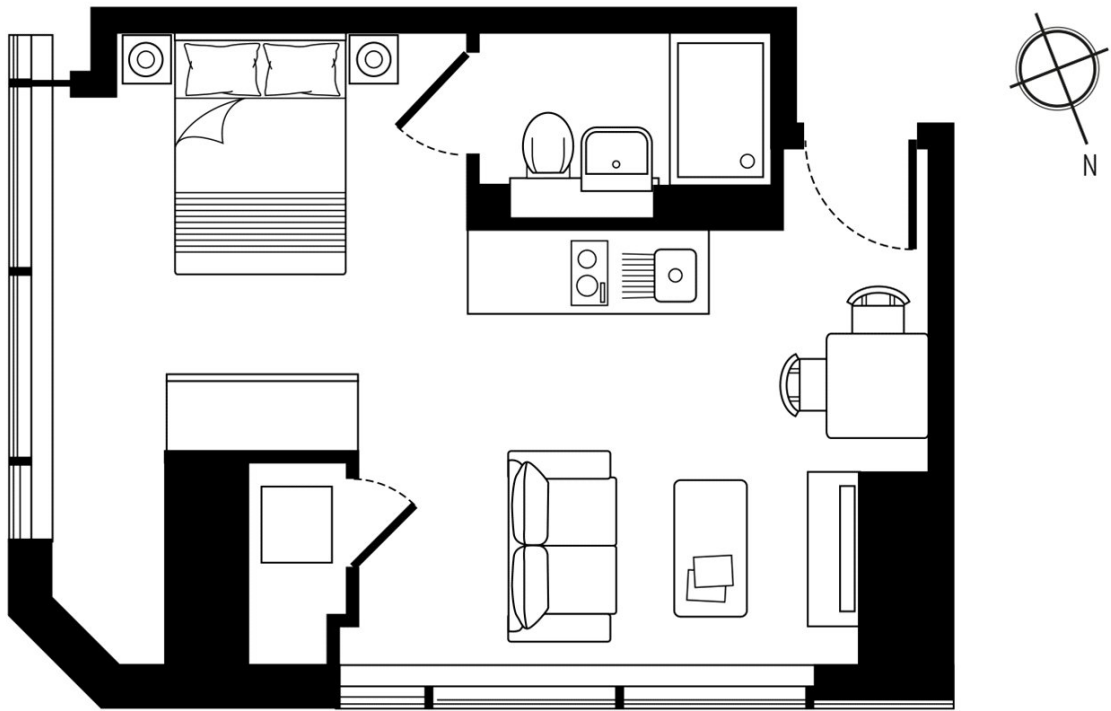


ABOUT THE HOME

Situated in the heart of Slough Central, Skyline Apartments is just 0.4 miles from Slough Station. Residents enjoy easy access to local amenities and rapid rail connections into central London.







LIVING AREA	4.5 x 4.0 m	14'8" x 13'0"
BEDROOM AREA	3.2 x 2.6 m	10'2" x 8'6"
TOTAL AREA:	31 SQ.M.	333 SQ.FT.

LiFE RESIDENTIAL

203 Trentham Court, Victoria
Road, London, W3 6BT
Sales: 020 3668 1112
Lettings: 020 3668 1111

Energy Rating: C. We aim to make our particulars both accurate and reliable. However they are not guaranteed; nor do they form part of an offer or contract. If you require clarification on any points then please contact us, especially if you're traveling some distance to view. Please note that appliances and heating systems have not been tested and therefore no warranties can be given as to their good working order.