



SYMON SMITH

RESIDENTIAL & COMMERCIAL ESTATE AGENTS
AND PROPERTY MANAGEMENT

240 Stamford Hill, London, N16 6TT

Sales: 020 8802 0025
sales@symonsmith.co.uk
Management: 020 8802 0022
management@symonsmith.co.uk



Keswick Apartments Ambleside Close, London, N17 6FH

£399,950

Welcome to this well-presented two-bedroom apartment located on Ambleside Close in London. Spanning an impressive 689 square feet, this flat offers a comfortable and inviting living space, perfect for individuals or small families seeking a modern home in a vibrant area.

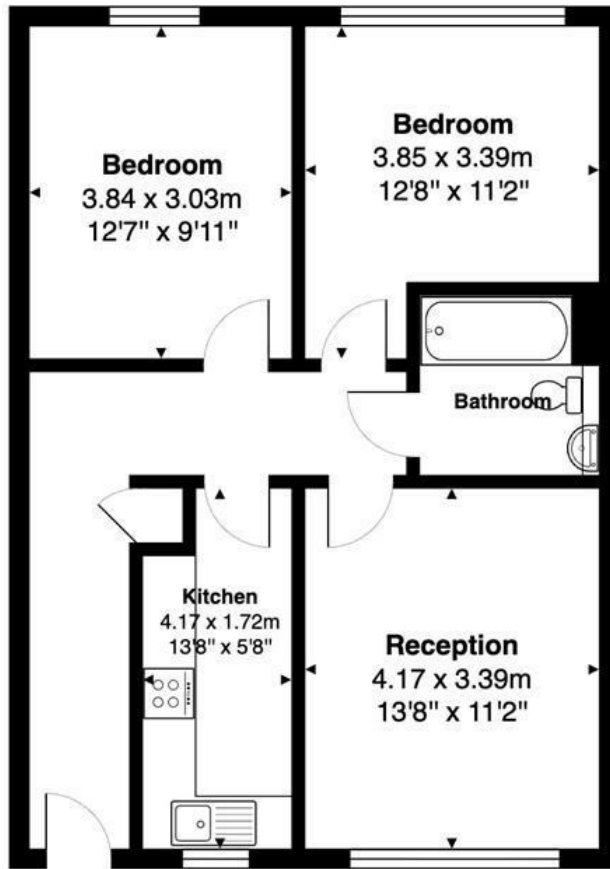
Upon entering, you will find a spacious reception room that serves as the heart of the home, ideal for both relaxation and entertaining guests. The apartment features two well-sized bedrooms, providing ample space for rest and personalisation. The bathroom is conveniently located, ensuring ease of access for all residents.

One of the standout features of this property is the secure allocated parking space, a rare find in London, offering peace of mind and convenience for those with a vehicle. Additionally, the apartment is chain-free, making the buying process smoother and more straightforward.

Situated close to local amenities, residents will enjoy easy access to shops, cafes, and public transport links, enhancing the overall appeal of this delightful flat. Whether you are a first-time buyer or looking to downsize, this property presents an excellent opportunity to secure a lovely home in a sought-after location. Do not miss the chance to make this charming apartment your own.

- Well Presented Two Bedroom Apartment
- Chain Free
- Council Tax Band B
- First Floor
- Close to local Amenities
- Secure Allocated Parking Space
- Epc Rating C

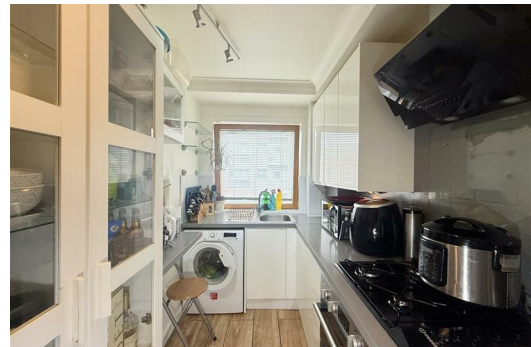
Keswick Apartments, Ambleside Close, LONDON, N17 6FH



First Floor

Total Area: 62.6 m² ... 674 ft²

All measurements are approximate and for display purposes only.



WWW.SYMONSMITH.CO.UK