



Connells

The Mews Apartments New Dover Road
Canterbury

The Mews Apartments New Dover Road Canterbury CT1 3DZ

for sale guide price
£325,000 to £350,000



Property Description

Connells are delighted to present to the market this stunning Contemporary Two Bedroom Apartment, within the prestigious gated development of The Mews Apartments, New Dover Road.

Built by highly regarded developers, Rogate Homes in 2006, these properties boast exceptional build quality and spacious, high specification interiors. This Penthouse apartment comprises of an open plan living space, with a stunning wrap around kitchen with fully integrated appliances and in the lounge area, a gorgeous wide bay window which overlooks the maintained communal gardens. From the main living space are two double bedrooms, with the primary bedroom benefiting from built in wardrobes and an en-suite shower room in addition to the main bathroom.

Lounge/Kitchen/Diner

20' 2" x 23' 1" (6.15m x 7.04m)

Bedroom One

12' 2" max x 11' 3" max (3.71m max x 3.43m max)

Bedroom Two

9' 11" max x 11' 3" max (3.02m max x 3.43m max)

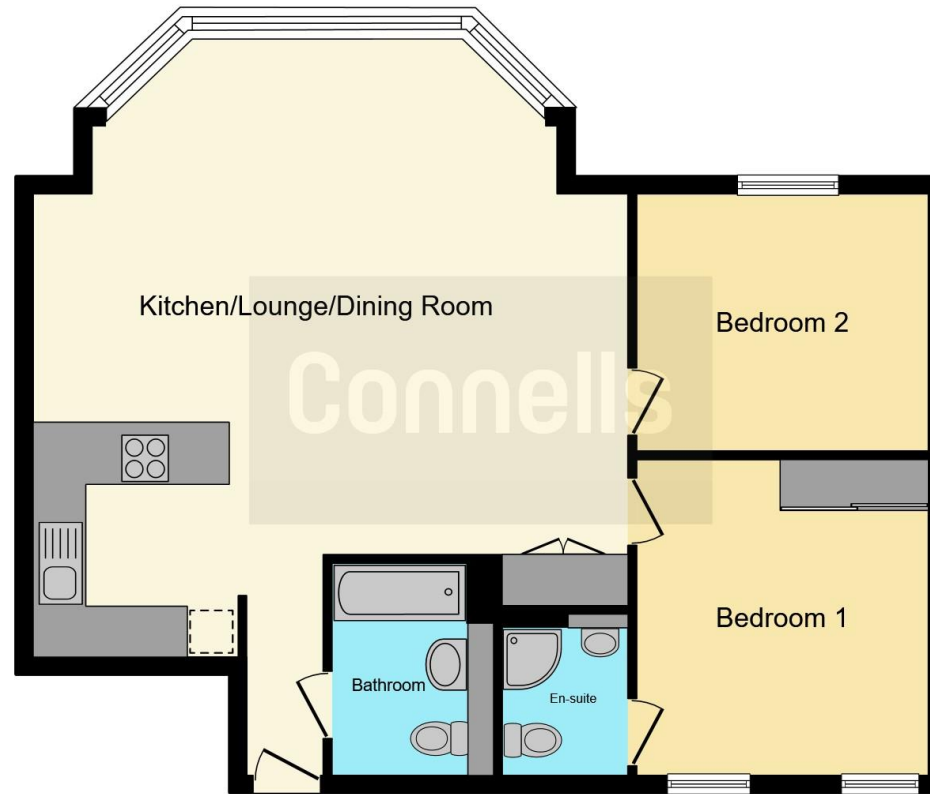
Bathroom

8' 7" x 6' 3" (2.62m x 1.91m)









This floorplan is for illustrative purposes only and is not drawn to scale. Measurements, floor-areas, openings and orientations are approximate. They should not be relied upon for any purpose and do not form any part of an agreement. No liability is taken for any error or mis-statement. All parties must rely on their own inspections.

To view this property please contact Connells on

T 01227 764 720
E canterbury@connells.co.uk

29-30 Watling Street
 CANTERBURY CT1 2UD

EPC Rating: B Council Tax
 Band: E

Service Charge:
 2054.00

Ground Rent:
 Ask Agent

Tenure: Leasehold

view this property online connells.co.uk/Property/CBY401577

This is a Leasehold property with details as follows; Term of Lease 199 years from 01 Jan 2005. Should you require further information please contact the branch. Please Note additional fees could be incurred for items such as



1. MONEY LAUNDERING REGULATIONS Intending purchasers will be asked to produce identification documentation at a later stage and we would ask for your co-operation in order that there will be no delay in agreeing the sale. 2. These particulars do not constitute part or all of an offer or contract. 3. The measurements indicated are supplied for guidance only and as such must be considered incorrect. Potential buyers are advised to recheck measurements before committing to any expense. 4. We have not tested any apparatus, equipment, fixtures, fittings or services and it is in the buyers interest to check the working condition of any appliances.

Connells Residential is registered in England and Wales under company number 1489613, Registered Office is Cumbria House, 16-20 Hockliffe Street, Leighton Buzzard, Bedfordshire, LU7 1GN. VAT Registration Number is 500 2481 05.

See all our properties at www.connells.co.uk | www.rightmove.co.uk | www.zoopla.co.uk

Property Ref: CBY401577 - 0012