

Rounthwaite R&W Woodhead

53 MARKET PLACE, MALTON, NORTH YORKSHIRE, YO17 7LX Tel: (01653) 600747

89 HAREBELL ROAD, MALTON, YO17 7FW



- Desirable position on the sought-after Broughton Manor development overlooking green space
- Four well-proportioned bedrooms including master with en-suite
- Enclosed rear garden
- Spacious open-plan dining kitchen
- Ample driveway parking and integral garage
- Within easy reach of the Town centre

PRICE GUIDE £375,000

Also at: 26 Market Place, Kirkbymoorside Tel: (01751) 430034 & Market Place, Pickering Tel: (01751) 472800

Email: malton@rounthwaite-woodhead.co.uk www.rounthwaite-woodhead.com

Description

89 Harebell Road sits in a desirable position on the popular Broughton Manor development with an open outlook across a designated green space. The property was built in 2019 and has a 10 year NHBC guarantee from the date purchased.

The ground floor is designed for modern living with an open plan layout and good quality fixtures and fittings. A spacious and well equipped dining kitchen extends the full width of the property overlooking the rear garden, double doors flow through to the sitting room and a cloakroom is located off the hallway. Upstairs, there are four generously sized bedrooms, including a master suite with en-suite shower room, along with a modern house bathroom suite.

To the front of the property there is ample driveway parking for several vehicles and an integral garage. To the rear there is an enclosed garden which is largely laid to lawn with a paved patio area.

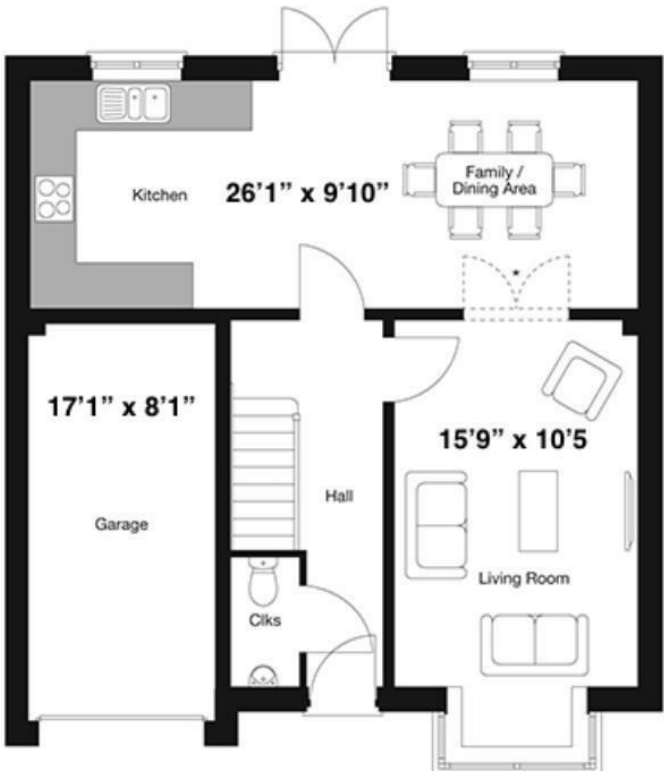
The centre of Malton is within a short distance and offers an excellent range of amenities with the railway station providing links to the Intercity service at York. Both primary and secondary schools are also within a short distance and there are many local sporting clubs including Tennis, Squash and Golf plus other recreational pursuits for young and old alike. The A64 which bypasses the town provides good road links east and west to the motorway network. Malton also offers an excellent range of varied shops, eating establishments and has gained regional acclaim with its regular food festival.

General Information

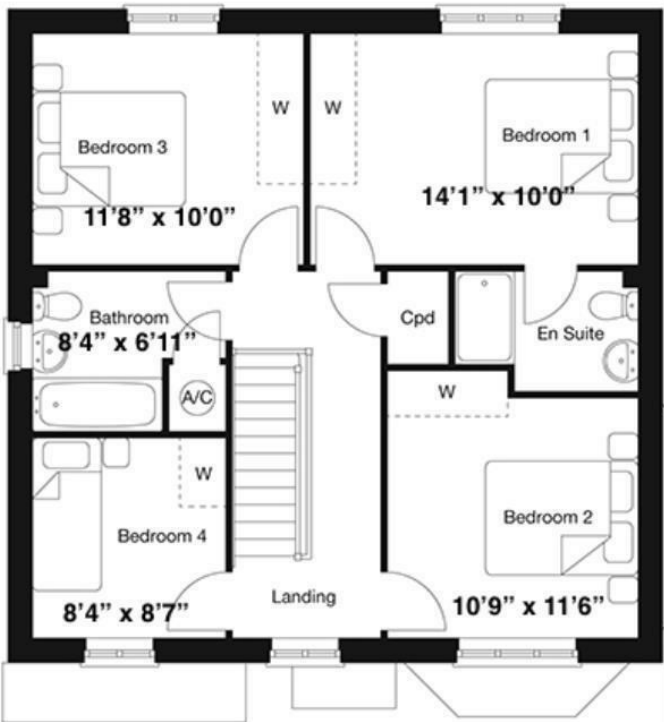


Accommodation

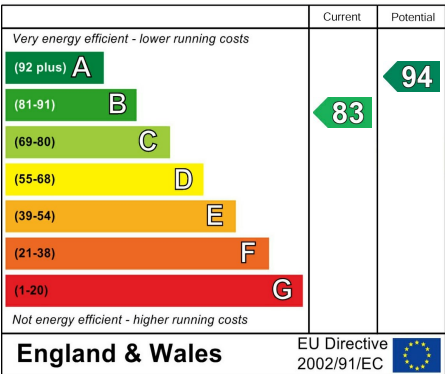
Ground Floor



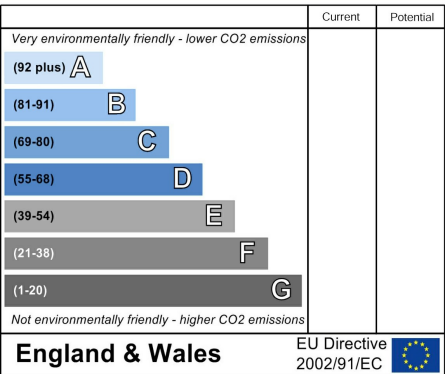
First Floor



Energy Efficiency Rating



Environmental Impact (CO₂) Rating





Messrs Rounthwaite & Woodhead for themselves and their vendors and lessors whose agents they are give notice that these particulars are produced in good faith, set out as a general guide only and do not constitute any part of a contract. No person employed by Messrs Rounthwaite & Woodhead has any authority to make or give any representation or warranty whatsoever in relation to this property. The dimensions in the sales particulars are approximate only and the accuracy of any description cannot be guaranteed. Reference to machinery, services and electrical goods does not indicate that they are in good or working order. All reference to prices and rents etc. exclude VAT which may apply in some cases.

Covering Ryedale through offices in Malton, Pickering and Kirkbymoorside
www.rounthwaite-woodhead.com

Rounthwaite **R&W** Woodhead