

Berkeley Gardens, Kensington, W8 4AP

£3,850 per calendar month | Unfurnished



Berkeley Gardens



A well-proportioned ground floor apartment in the heart of Kensington, offered on an assured periodic tenancy. The apartment extends to approximately 705 sq ft (65 sq m) and features generous ceiling heights of 3.10m throughout the principal reception room, lending the space a sense of volume rarely found in properties of this size.

The reception room measures 19'6" x 11'4" and benefits from a large bay window flooding the room with natural light, a feature fireplace and elegant panelled walls. The room comfortably accommodates both living and dining arrangements.

Two well-sized bedrooms are positioned to the rear of the apartment, offering a quieter aspect. The principal bedroom measures 14'1" x 10'7", with the second bedroom at 16'6" x 7', both of good double proportions. A family bathroom serves both bedrooms.

A separate kitchen and private balcony complete the accommodation. The property is presented in neutral, contemporary decorative order throughout and is offered unfurnished, allowing incoming tenants to make the space their own.

The apartment occupies the ground floor of an attractive period building on one of Kensington's most desirable residential streets, combining the character of a Victorian conversion with the convenience of level access from the street.

Available 7 June 2026





6 Berkeley Gardens, Kensington, W8 4AP

Key Features

- Two bedrooms
- Two bathroom
- Reception room
- Separate kitchen
- Balcony
- Ground floor
- 705 sq ft
- EPC D

Location

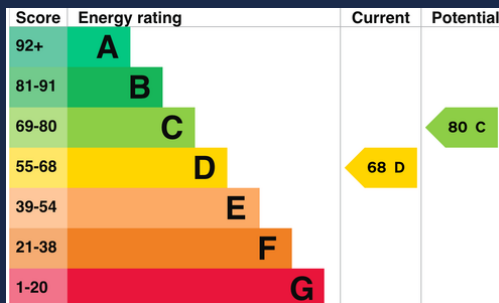
Berkeley Gardens is a quiet, tree-lined residential street in the heart of Kensington, moments from the amenities of Kensington High Street.

The property is well served by three underground stations within walking distance: High Street Kensington (Circle and District lines, 4 minutes), Gloucester Road (Circle, District and Piccadilly lines, 8 minutes) and Notting Hill Gate (Central, Circle and District lines, 7 minutes).

Kensington Palace and its gardens, Holland Park and Hyde Park are all within easy reach on foot. The Design Museum and Leighton House Museum are nearby, with the Victoria and Albert Museum, Natural History Museum and Royal Albert Hall a short walk south.

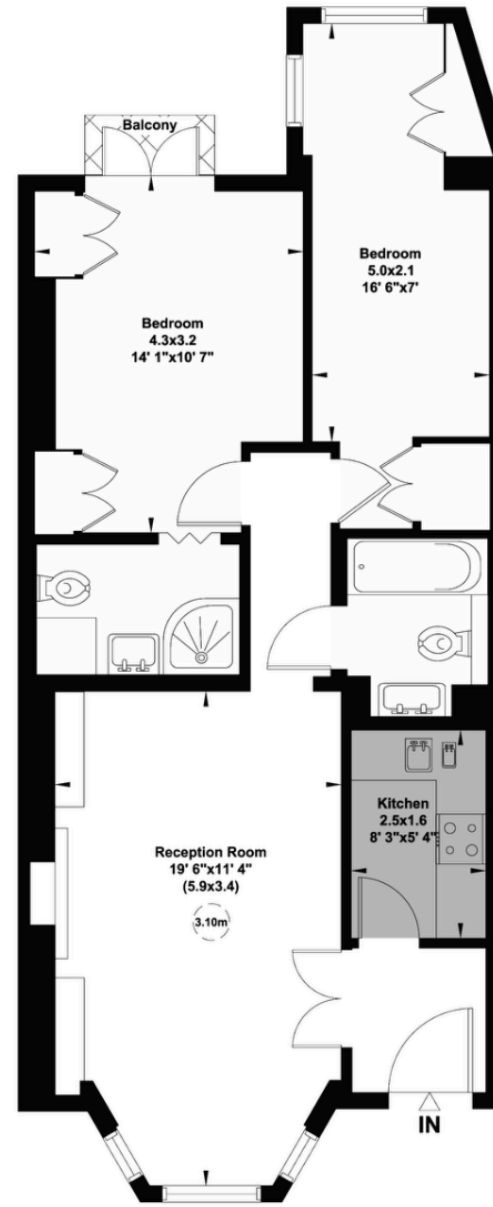
Day-to-day shopping includes Whole Foods Market and Marks and Spencer on Kensington High Street, with a Tesco Express on Wright's Lane. Kensington Church Street offers a range of independent restaurants, galleries and antique dealers running north towards Notting Hill.

Fox Primary School is less than 300 metres from the front door.



Floorplan

Gross internal area (approx.)
65 Sq m (705 Sq ft)
For identification only, Not to Scale



Gross internal area: approximately 705 sq ft (65 sq m). EPC rating D (68).
Measurements are approximate. Not to scale.



Kris Ericsson | kericsson@primelondonlettings.com
Mike Sands | msands@primelondonlettings.com

info@primelondonlettings.com

Personally placed.

These particulars are intended as a guide and must not be relied upon as statements of fact.