



138 Grove Lane, Hale

£1,350,000 Freehold

Impressive new build six bed detached on Grove Lane. Spacious open plan living, luxury kitchen, large private plot, gated access, landscaped garden, near top schools and local amenities.

Council Tax band: G

Tenure: Freehold

EPC Energy Efficiency Rating: B

EPC Environmental Impact Rating: B



**HIBBERT
HOMES**

SALES & LETTINGS

This impressive six bedroom detached house on Grove Lane is a new build and is ideal for those space hungry buyers who are looking for a large family home (over 3000 sq ft) that is ready to move into immediately.

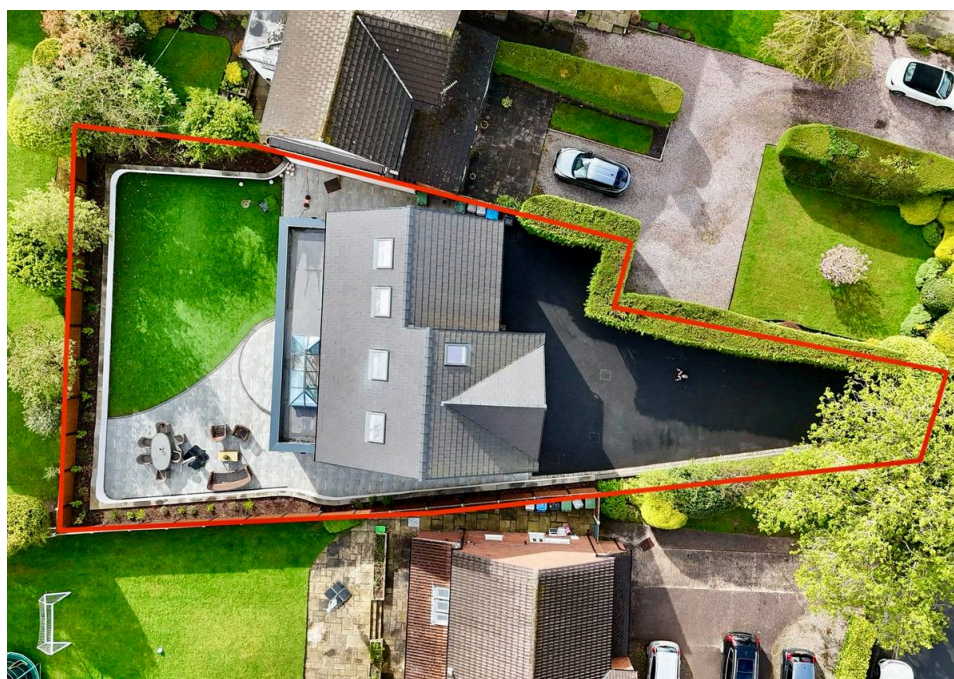
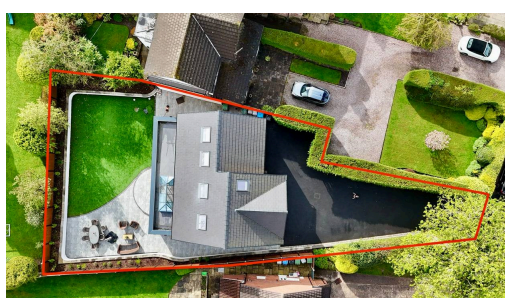
The 'hub of the house' is the large open plan living/dining/kitchen that extends the full width of the house and measures an impressive 36' x 20' with Crittall doors leading directly to the private rear garden. The kitchen is fitted with an extensive range of contemporary base and eye level units with integrated appliances, granite work surfaces and a matching island unit. There is also a useful utility room.

There is a cosy living room positioned to the front of the house, a cloaks room and downstairs W/C and garage.

To the first floor, the large master bedroom has an en-suite and dressing area. There are a further two double bedrooms, a single bedroom/study and a beautifully presented family bathroom finished to the highest specification. To the second floor there are a further two double bedrooms

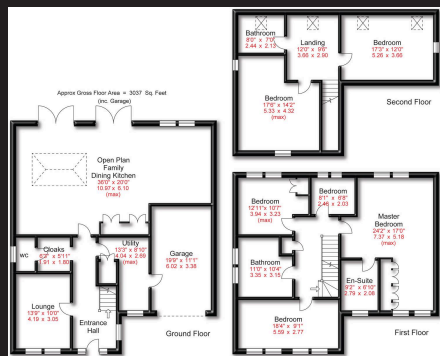
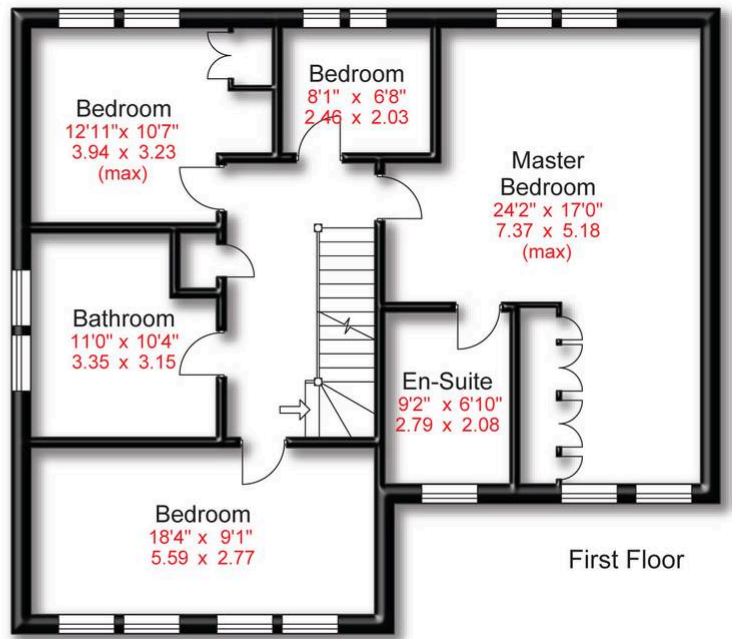
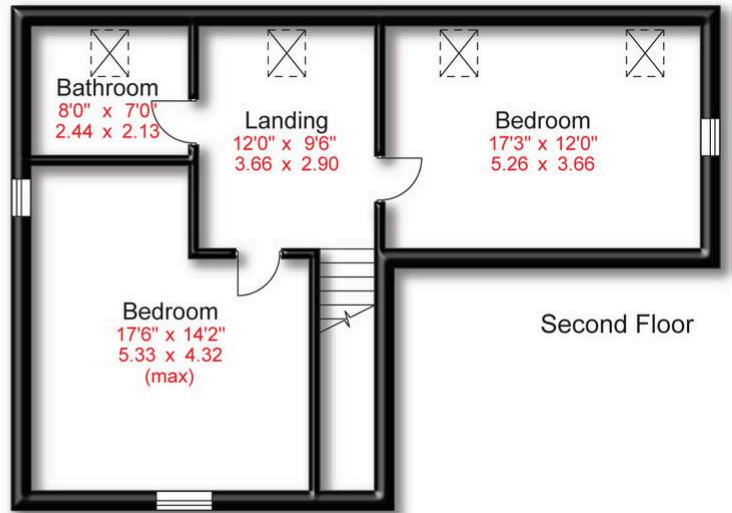
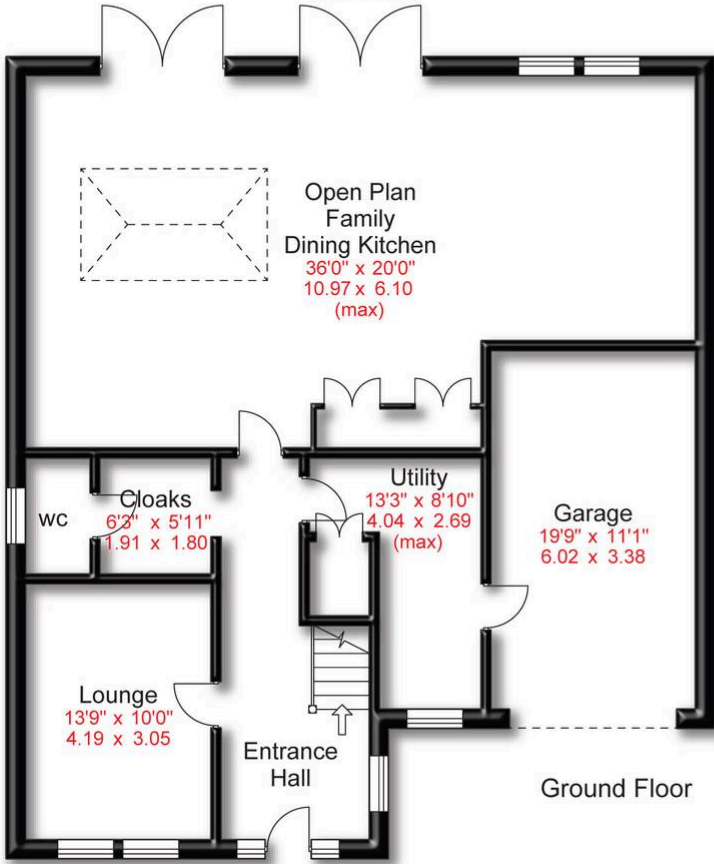


- › Six Bedroom New Build Detached Home
- › Finished to the Highest Specification
- › Three Bathrooms and Downstairs W/C
- › Large Open Plan Family Dining Kitchen
- › Gated Driveway for Multiple Vehicles
- › No Onward Chain
- › Popular Residential Location
- › Over 3000 sqft





Approx Gross Floor Area = 3037 Sq. Feet
(inc. Garage)



You can include any text here. The text can be modified upon generating your brochure.

