



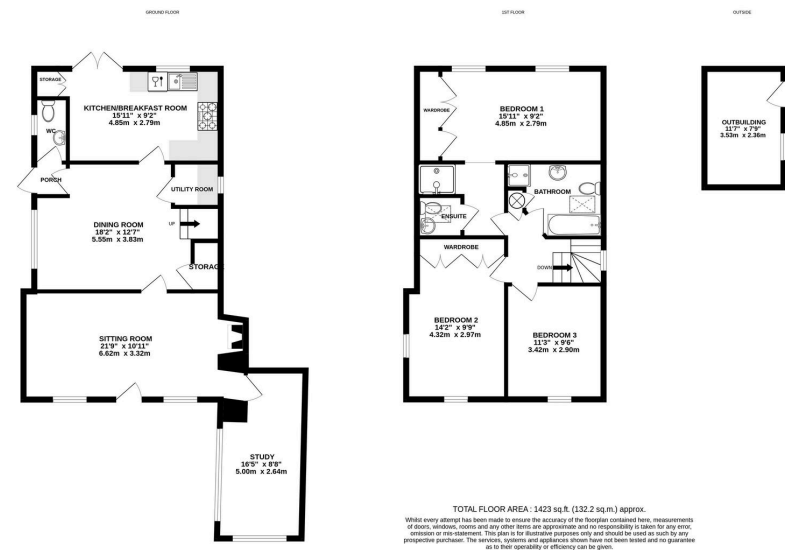
Kilpeck, Hereford  
Guide Price £435,000

3 2 3



- No Onward Chain
- Quiet Rural Setting with Lovely Views
- Short Drive to Hereford City
- Front Extension
- Stone's Throw from Local Pub
- 3 Double Bedrooms; 3 Reception Rooms





A Charming 3 Double Bedroom Detached Cottage in the Heart of Kilpeck, offering generous living space, a sizeable front extension, beautiful countryside views to both the front and rear, and the benefit of No Onward Chain.

This characterful yet spacious home offers a wealth of exposed beams, stonework and traditional features. The layout is ideal for family living, with three reception rooms, a kitchen/breakfast room, utility, ground floor WC, three double bedrooms, an ensuite and a family bathroom. Mature gardens, outbuilding and multiple seating areas surround the cottage, all set against attractive rural views.

