



## Finchley Road, NW3

£1,325,000

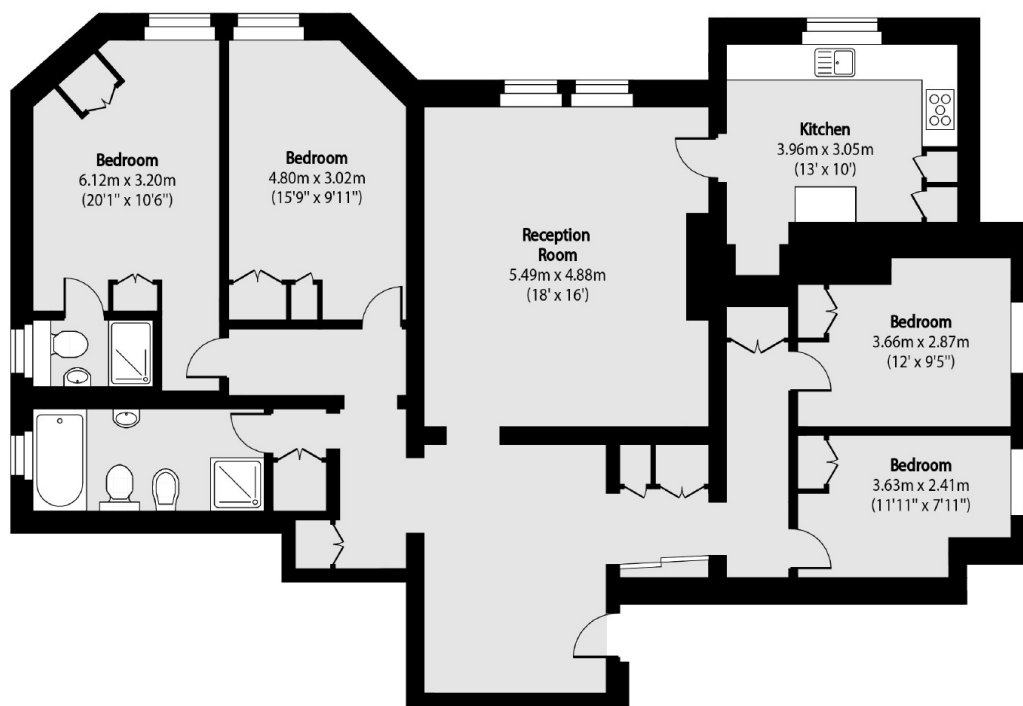
A fabulous four bedroom, rear facing first floor luxury apartment with a large reception room, two bathrooms, an impressive entrance hall, high ceilings and a parking space.

This character period property is conveniently located on the Hampstead side of Finchley Road, providing convenient access to Finchley Road and Frognal overground station and Finchley Road underground station (Northern line)

### Features

- Large Apartment (1,540 sq ft)
- High Ceilings
- Two Receptions
- Four Bedrooms
- Parking Space
- Sole Agent

# Finchley Road, London, NW3



Total area (approx): 143.07 sq m (1540 sq. ft)