



The Gallery Plaza Boulevard, Liverpool, Merseyside L8 5RS

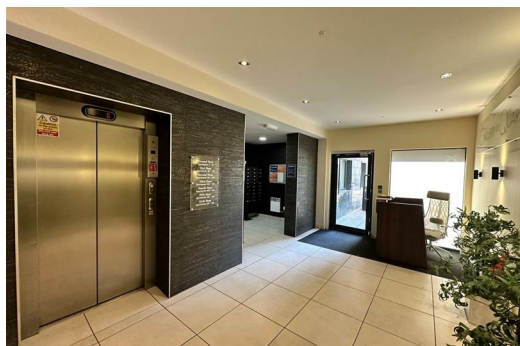
£950 PCM

Welcome to this charming two-bedroom apartment located in the vibrant Baltic Triangle area of Liverpool, specifically on Plaza Boulevard. This property offers a perfect blend of modern living and urban convenience, making it an ideal choice for professionals or small families.

Upon entering the apartment, you will find a spacious reception room that provides a warm and inviting atmosphere, perfect for relaxation or entertaining guests. The layout is designed to maximise space and light, creating a comfortable living environment. The two well-proportioned bedrooms offer ample space for rest and personalisation, catering to your individual needs.

One of the great features of this apartment is the opportunity to rent a parking bay, available for £100 per month, providing you with the convenience of secure parking in the area if desired. The Baltic Triangle is known for its creative atmosphere, with an array of trendy bars, restaurants, and cultural venues just a stone's throw away. This location not only offers a lively community but also easy access to the city centre and public transport links.

Deposit: £950.00
Council Tax: Band C
Minimum Term: 12months



Hallway

Entrance Door, wooden flooring, Electric wall heater, walk in storage cupboard with water cylinder and washing machine

Open Plan Lounge Kitchen

Double glazed windows, wooden flooring throughout, electric wall heaters, kitchen comprises of a ranged of fitted base and wall units stainless steel sink with mixer tap, appliances include electric oven and hob, Fridge / freezer, dishwasher and extractor hood.

Bedroom 1

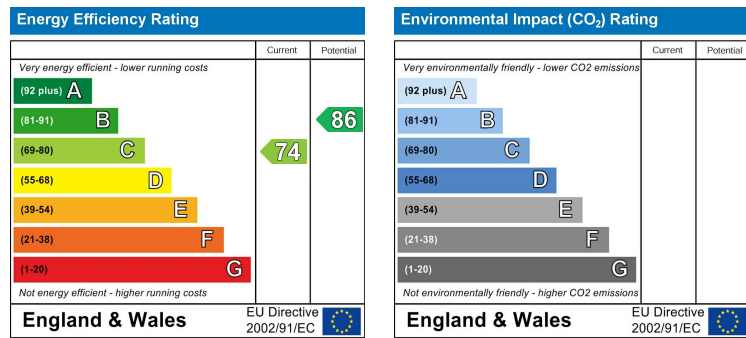
Double glazed window, carpet and electric wall heater

Bedroom 2

Double glazed window, carpet and electric wall heater

Bathroom

Fully tiled walls and flooring, panelled bath with shower over and screen, low level w.c. and sink, Double glazed window and ladder towel rail.



Berkeley Shaw Estate Agents Limited.
Company No. 0784754

Berkeley Shaw Real Estate Limited.
Company No. 05206927

