



Hampton Tower, 75 Marsh Wall, London, E14 9QA

£725 Per Week

A 45TH FLOOR APARTMENT FACING SOUTH WITH AMAZING VIEWS OVER LONDON & THE THAMES

South Quay Plaza is one of the tallest residential towers in Europe designed by "Foster & Partners" topping out at 68 floors with amenities including one of the highest bars in Europe located on the 56th floor, a cinema, gym, 160 square meter pool, 24 hour concierge and 2.6 acres of gardens all within 0.3 miles of Canary Wharf station

Comprising a South facing reception room with floor to ceiling windows which slide back to let the outside in. A state of the art kitchen, double bedroom with ample storage and a luxury bathroom

FURNISHED.
AVAILABLE FROM 8TH JUNE

- 45TH FLOOR
- FURNISHED
- CONCIERGE, POOL, GYM & CINEMA
- SOUTH FACING FLOOR TO CEILING SLIDING WINDOWS
- ONE BEDROOM APARTMENT
- PART OF SOUTH QUAY PLAZA
- AMAZING VIEWS
- 650 SQUARE FEET
- AVAILABLE FROM EARLY JUNE
- 56TH FLR RESIDENTS BAR

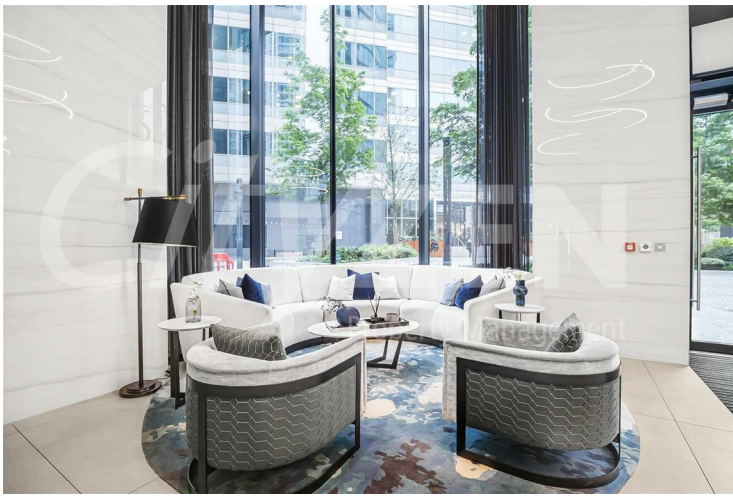
Hampton Tower, 75 Marsh Wall, London, E14 9QA



HAMPTON TOWER



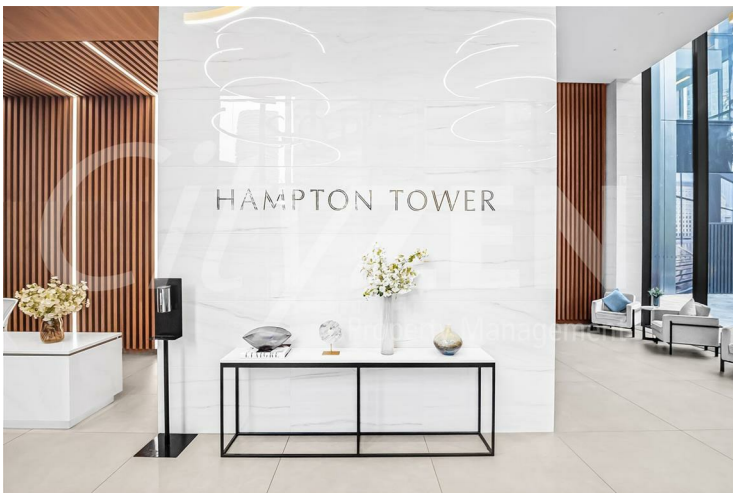
RESIDENTS CINEMA ROOM



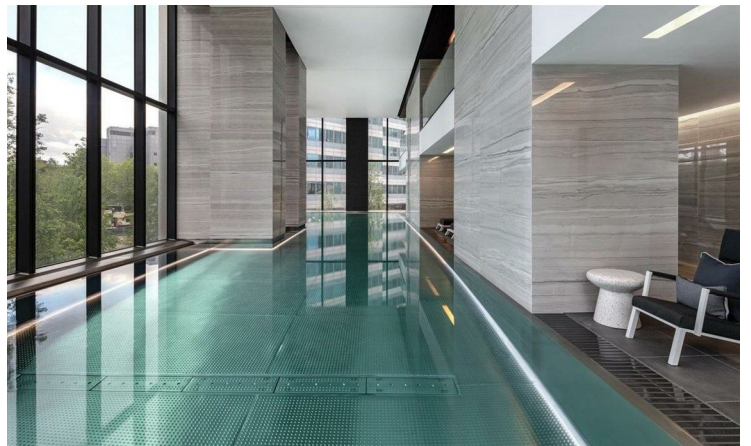
LOBBY



RESIDENTS BAR

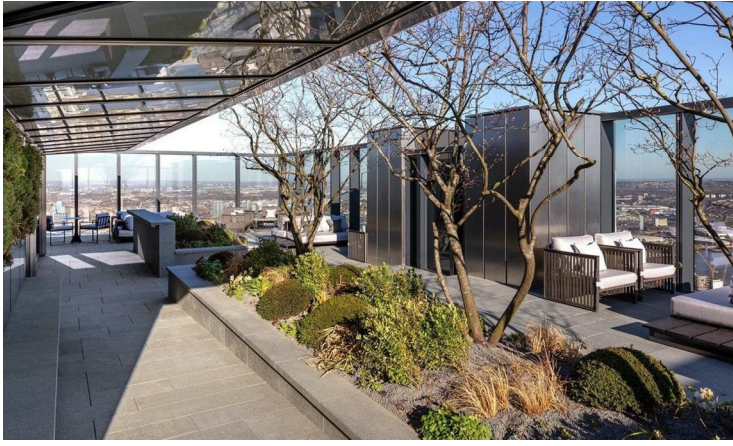


LOBBY



RESIDENTS POOL

Hampton Tower, 75 Marsh Wall, London, E14 9QA



RESIDENTS ROOF GARDEN



BEDROOM



RESIDENTS BAR



BEDROOM



VIEW FROM APARTMENT



BEDROOM

Hampton Tower, 75 Marsh Wall, London, E14 9QA



BEDROOM



RECEPTION



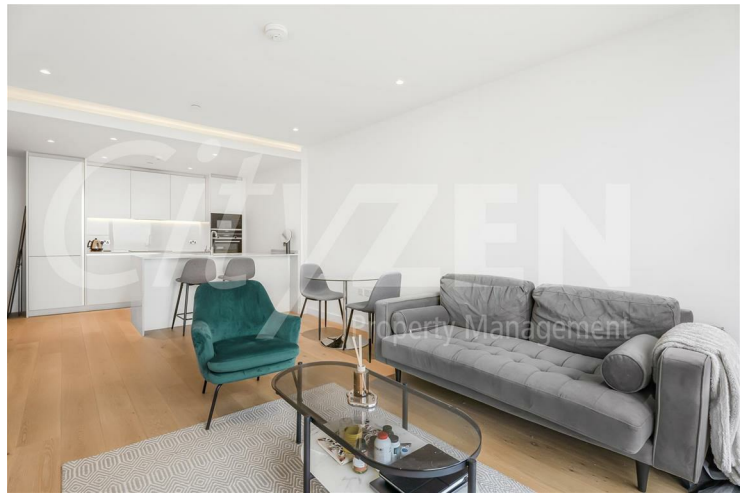
RECEPTION



VIEW FROM APARTMENT



RECEPTION



RECEPTION

Hampton Tower, 75 Marsh Wall, London, E14 9QA



KITCHEN



RECEPTION



KITCHEN



KITCHEN



RECEPTION/KITCHEN



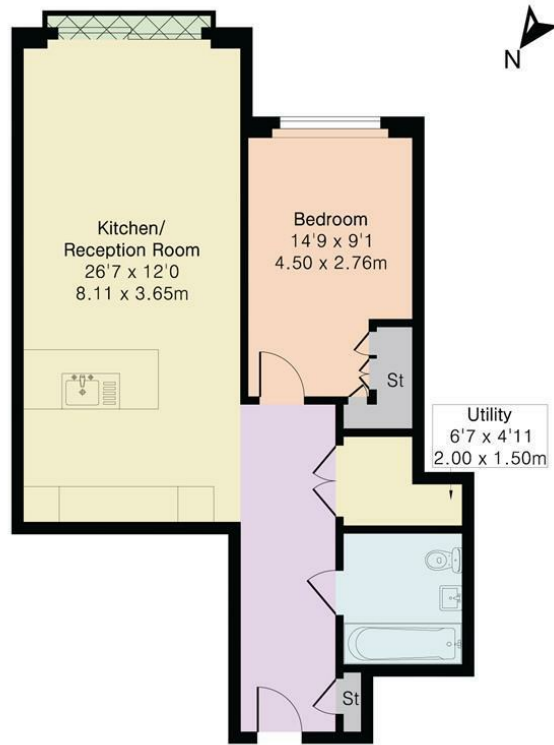
BATHROOM

Hampton Tower, 75 Marsh Wall, London, E14 9QA



HAMPTON TOWER

Approximate Gross Internal Area 651 sq ft - 60 sq m



Forty Fifth Floor



Floor plan produced in accordance with RICS Property Measurement 2nd Edition. Although Pink Plan Ltd ensures the highest level of accuracy, measurements of doors, windows and rooms are approximate and no responsibility is taken for error, omission or misstatement. These plans are for representation purposes only and no guarantee is given on the total square footage of the property within this plan. The figure icon is for initial guidance only and should not be relied on as a basis of valuation.



Energy Efficiency Rating		
	Current	Potential
Very energy efficient - lower running costs		
(92 plus) A		
(81-91) B	85	85
(69-80) C		
(55-68) D		
(39-54) E		
(21-38) F		
(1-20) G		
Not energy efficient - higher running costs		
England & Wales		EU Directive 2002/91/EC
Environmental Impact (CO ₂) Rating		
	Current	Potential
Very environmentally friendly - lower CO ₂ emissions		
(92 plus) A		
(81-91) B		
(69-80) C		
(55-68) D		
(39-54) E		
(21-38) F		
(1-20) G		
Not environmentally friendly - higher CO ₂ emissions		
England & Wales		EU Directive 2002/91/EC

We have prepared these property particulars as a general guide to a broad description of the property. They are not intended to constitute part of an offer or contract. We have not carried out a structural survey and the services, appliances and specific fittings have not been tested. All photographs, measurements, floorplans and distances referred to are given as a guide only and should not be relied upon for the purchase of carpets or any other fixtures or fittings. Lease details, service charges and ground rent (where applicable) and council tax are given as a guide only and should be checked and confirmed by your Solicitor prior to exchange of contracts.