



Gloucester Street , London, SW1V

£750,000

Nestled in the sought-after Pimlico Grid, this charming two-bedroom lower ground floor apartment on Gloucester Street offers a delightful blend of comfort and convenience. Spanning approximately 698 square feet, the property is designed to maximise space and light, making it an ideal home for modern living.

Upon entering, you are greeted by a welcoming hallway that leads to two generously sized double bedrooms. The primary bedroom boasts an ensuite shower room, providing a private retreat for relaxation. The open-plan L-shaped kitchen and living room diner create a sociable atmosphere, perfect for entertaining guests or enjoying quiet evenings at home. Additionally, the apartment features a separate utility room and an extra WC and shower, enhancing its practicality.

Additional standout features of this property are the light well patio and a separate, secluded south-west facing garden to the rear - offering tranquil outdoor space to unwind and enjoy the sunshine.

With no onward chain, this apartment is ready for immediate occupancy, making it an excellent opportunity for both first-time buyers and investors alike. The desirable location ensures easy access to local amenities, transport links, and the vibrant culture of Pimlico. This property is not just a home; it is a lifestyle choice in one of London's most appealing neighbourhoods.

Local Authority: Westminster City Council
Service Charge: Estimated to be £2350 per annum for 2026/2027 financial year
Lease: Approx. 117 years remaining
Ground Rent: £10 per annum

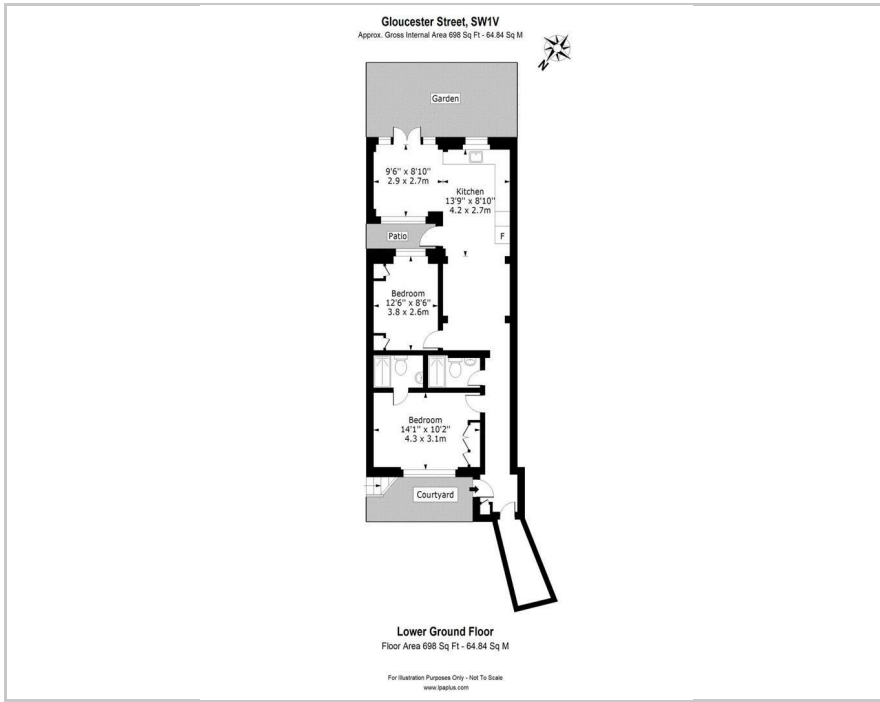
Viewing

Please contact our Intra Capital Estates Office on 0207 183 6676 if you wish to arrange a viewing appointment for this property or require further information.

- Two Bedroom Apartment
- Two Shower Rooms
- Lower Ground Floor
- Secluded Garden to Rear
- Situated on Desirable Pimlico Grid
- Long Lease
- No Onward Chain



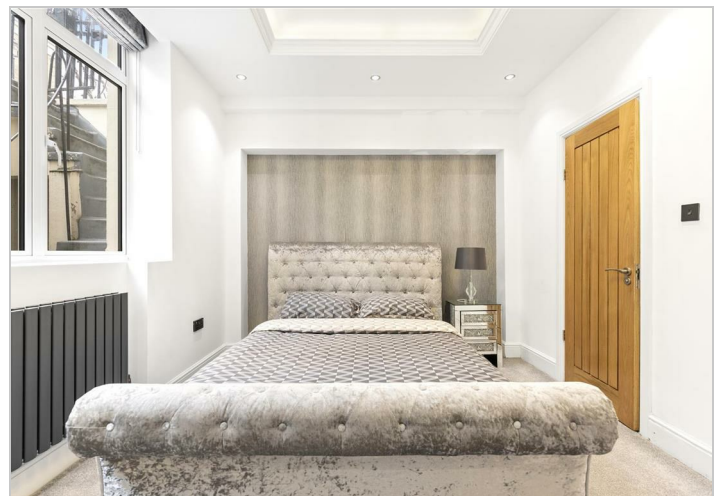
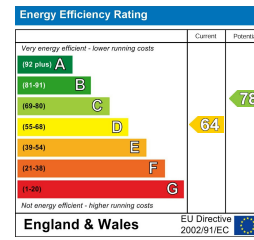
Floor Plan



Area Map



Energy Efficiency Graph



These particulars, whilst believed to be accurate are set out as a general outline only for guidance and do not constitute any part of an offer or contract. Intending purchasers should not rely on them as statements of representation of fact, but must satisfy themselves by inspection or otherwise as to their accuracy. No person in this firm's employment has the authority to make or give any representation or warranty in respect of the property.

INTRA-CAPITAL ESTATES

Paddington Works, 8 Hermitage Street, London, W2 1BE

Tel: 0207 183 6676 Email: info@intra-capital.co.uk

www.intra-capital.co.uk

Intra-Capital Estates is a trading name of Intra Capital Estates Limited, a private limited company registered in England and Wales.
Registered number: 11840427. VAT registration number: 31763281. Registered office Paddington Works, 8 Hermitage Street, London, W2 1BE.

MODERN APPROACH TRADITIONAL VALUES

