

Boardwalk

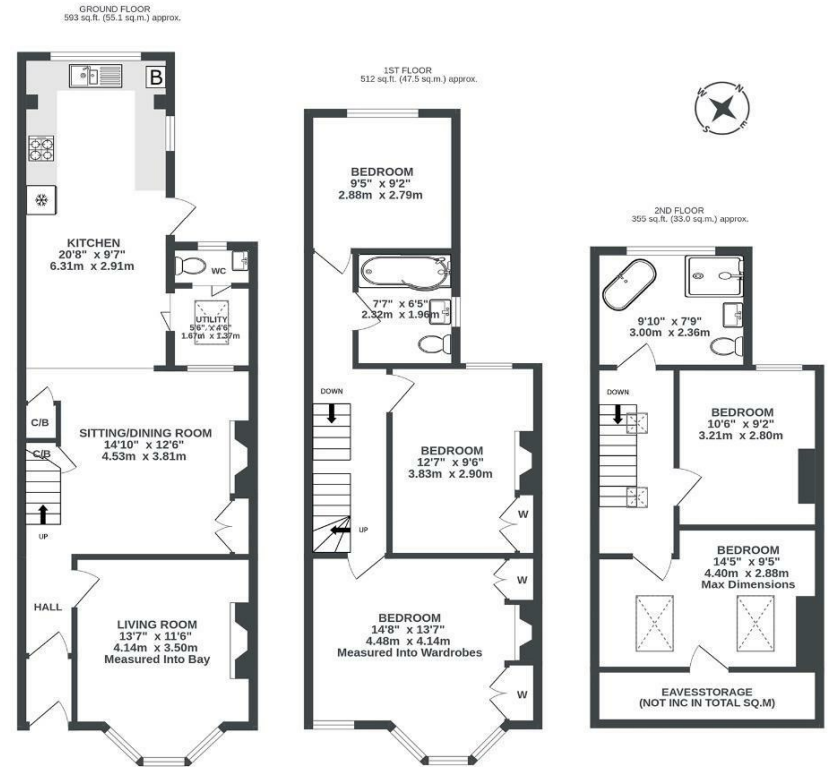
Exeter Road

SOUTHVILLE, BRISTOL

Exeter Road

SOUTHVILLE

APPROXIMATE FLOOR AREA
135.6 SQM / 1460 SQFT



Illustrations are for reference purposes only, measurements are approximate, not to scale.

Boardwalk

Exeter Road

SOUTHVILLE, BRISTOL



£700,000



5 Bedrooms



BS3 1LY



3 Bathrooms

"We've lived in Southville for 11 years and it's such an amazing community. From mooching down to the Tobacco Factory market every Sunday, to dining out at Cor, Yafo or Souk, or just popping into a local to have a drink and a chinwag, we felt right at home as soon as we moved here."

