



Plot 28 The Hereford, Ashtree Grove, Hampton-In-Arden

£700,000

105% Part Exchange Available! Discover everything The Hereford has to offer. This exceptional four-bedroom semi-detached home has been thoughtfully designed with contemporary family living in mind, offering generous accommodation that's perfect for larger families. The property features a garage, a spacious lounge, an open-plan kitchen and dining area, a separate utility room, an ensuite to the principal bedroom and ample storage throughout. Outside, you'll enjoy a private rear garden, an EV charging point and convenient off-road parking. With a predicted completion date of Autumn 2026, now is the perfect time to secure your new home. A beautifully presented show home is available to view. Contact us today to arrange your appointment.

Bedrooms: 4 | Bathrooms: 2 | Receptions: 1

Property Type: Semi-detached House

Bedrooms: 4 | Bathrooms: 2 | Receptions: 1

105% Part Exchange Available!

Discover everything The Hereford has to offer – an exceptional four-bedroom semi-detached home, thoughtfully designed to provide generous living space and contemporary style, making it the ideal choice for larger families or those looking for extra room to grow.

At the heart of the home is a bright and spacious open-plan kitchen and dining area, creating the perfect setting for everyday family life, entertaining guests or enjoying meals together. A separate utility room adds valuable practicality, while the generous lounge provides a comfortable space to relax and unwind. Designed with modern living in mind, the home also benefits from ample storage throughout, ensuring everything has its place.

Upstairs, four well-proportioned bedrooms provide flexible accommodation for families of all sizes. The principal bedroom benefits from its own private ensuite, while the remaining bedrooms are served by a contemporary family bathroom.

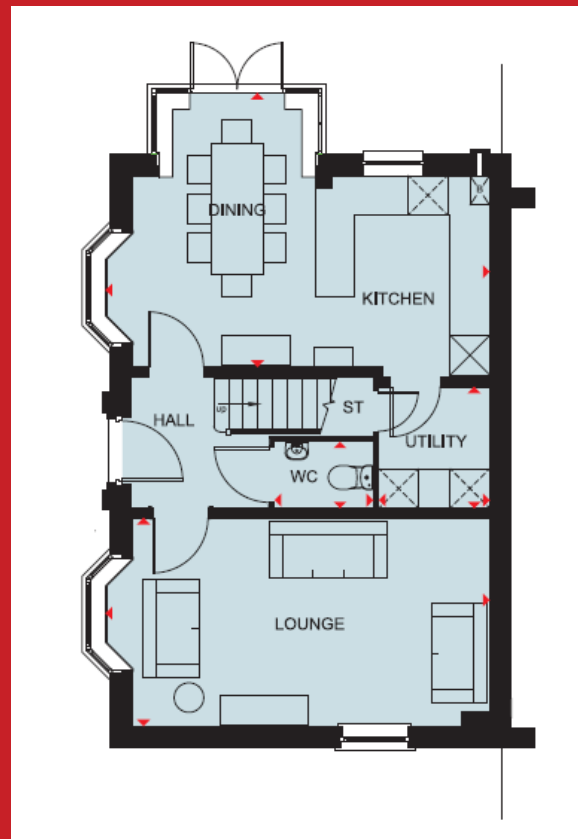
Externally, the property enjoys a private rear garden, ideal for outdoor dining, children's play or simply relaxing during the warmer months. A garage and driveway provide convenient off-road parking, while the inclusion of an EV charging point offers a practical, future-ready feature for electric vehicle owners.

With a predicted completion date of Autumn 2026, this is an excellent opportunity to secure your dream home and take advantage of the 105% Part Exchange incentive, making your move even easier.

Situated within the highly desirable village of Hampton in Arden, residents can enjoy a charming community atmosphere, excellent local amenities, well-regarded schools and superb transport links. With easy access to Birmingham, Solihull, Coventry and major road and rail networks, the village offers the perfect balance of peaceful countryside living and convenient connectivity for commuters and families alike.

Contact us today to arrange your appointment and find out more about making this outstanding new home yours.





Contact us today!
0121 744 4144 + Option 3
newhomes@smart-homes.co.uk

