



## The Retreat, Hutton Rudby.

Offers In Region Of £1,200,000

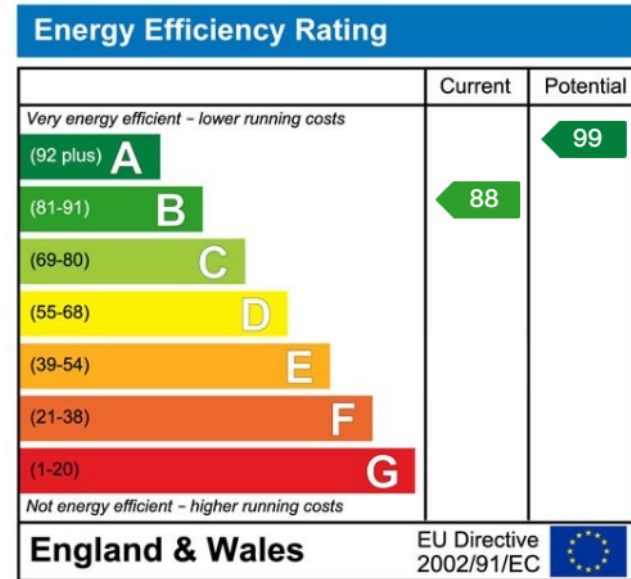
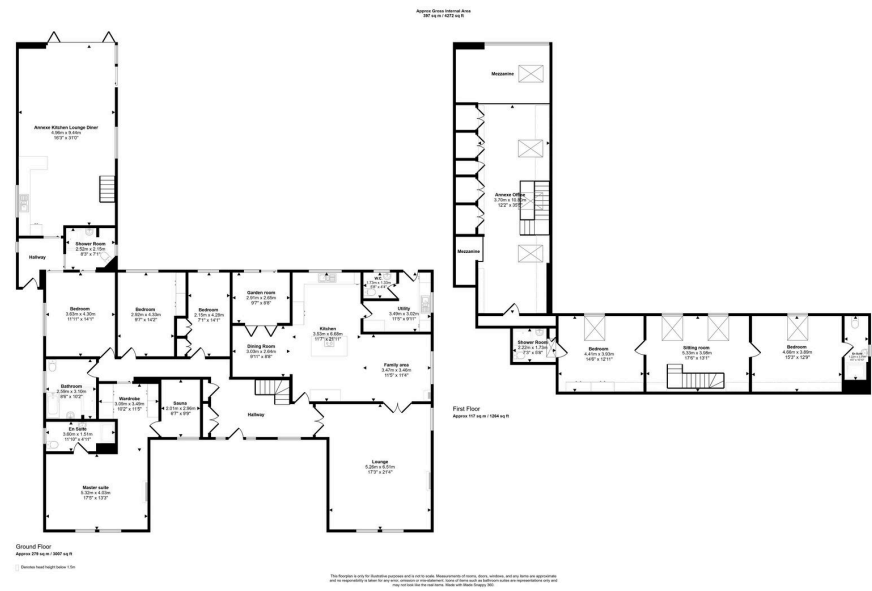
🛏️ 6 🚿 5 🚗 3

- 0.5 acre plot.
- 4,272 sq ft.
- Exceptional multi-generational living opportunity.
- Large driveway with double garage.
- Fantastic annexe with mezzanine.
- A rated energy efficiency and solar panels.
- No Onward Chain



A truly individual 4,272 sq ft family home with versatile living, a stunning annexe, and private 0.5-acre grounds in the heart of Hutton Rudby.





📍 26-28 High Street, Stokesley, Middlesbrough, TS9 5DQ

✉ stokesley@harveybrooks.com

☎ (01642) 687 223

🌐 www.harveybrooks.com

