



PRESTWICH TERRACE, SW4

£915,000

- Three bedrooms
- Two bathrooms
- Split level
- Beautifully presented
- Abbeville Village
- Energy rating: C





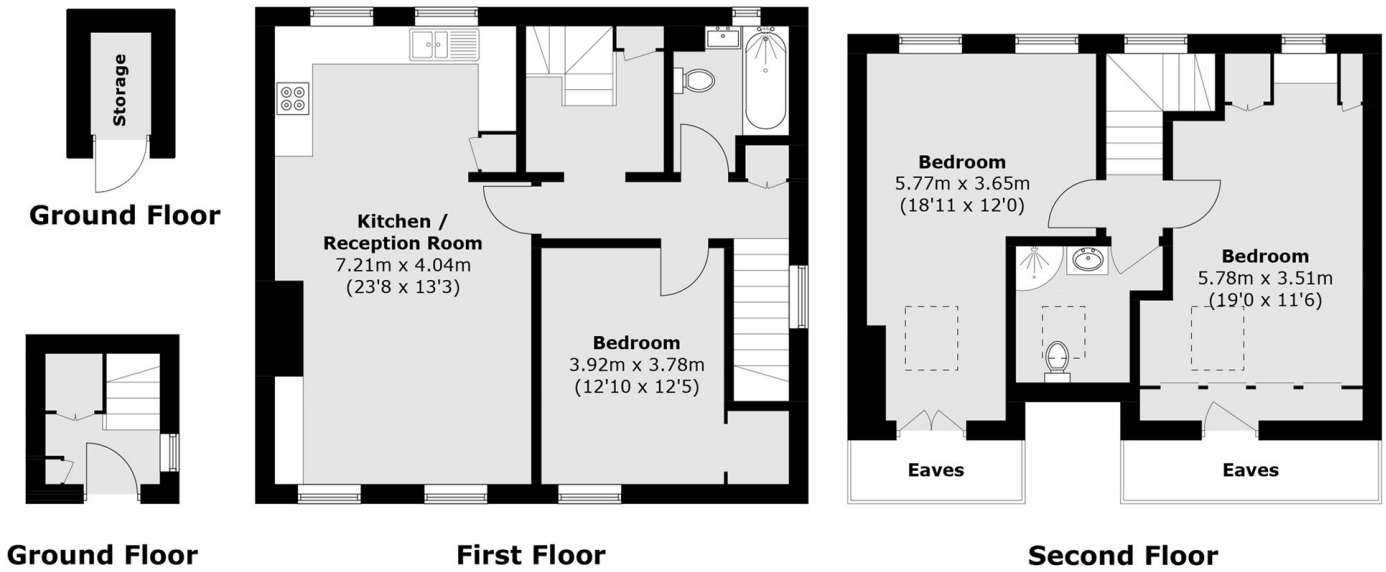
ABOUT THE HOME

A beautifully presented split-level flat offering over 1100 sq.ft of living space. Arranged over two floors, the accommodation comprises three double bedrooms, two bathrooms and an open-plan living/dining room with modern kitchen. The property further benefits from a private garden.

Prestwich Terrace on Crescent Lane is a much sought after residential road within easy reach of Clapham Common and its many amenities, including the independent shops, cafés and bars of Abbeville Village, Clapham Old Town and Clapham High Street. Clapham Common (Northern line) Underground (0.3 mile) offers direct commuting to the City and West End, along with numerous frequent bus services running close by.







Total area (approx.): 106.3 sq. m (1,144.2 sq. ft)
 (Excluding Eaves)
 External Storage (approx.): 2.4 sq. m (25.8 sq. ft)

JACKSONS CLAPHAM

73 Abbeville Road, London,
 SW4 9JN
 Sales: 020 8487 3177
 Lettings: 020 8487 3178

Energy Rating: C We aim to make our particulars both accurate and reliable. However they are not guaranteed; nor do they form part of an offer or contract. If you require clarification on any points then please contact us, especially if you're traveling some distance to view. Please note that appliances and heating systems have not been tested and therefore no warranties can be given as to their good working order.