



Bunwell Street | Bunwell | NR16 1NA  
Offers In Excess Of £480,000

twgaze

# Bunwell Street | Bunwell | NR16 1NA Offers In Excess Of £480,000

Nestled in the popular Village of Bunwell this three bedroom Grade II Listed cottage is ideal for an equestrian enthusiast with its rustic charm a period features. With a 0.99 acre plot with stables and fenced Paddock this really is a rare find.

- Three bedroom
- Stables, tack room and store
- Exposed beams and wood burners
- Ground floor bathroom
- study
- 0.99 acre Plot
- Double open cart lodge
- Lounge and separate dining room
- First floor bathroom
- Boot room and utility room

## The Location

Bunwell, situated in South Norfolk, 7 miles to the market town of Wymondham offering all amenities from primary to high schools including the prestigious Wymondham College and Wymondham High School. There are three supermarkets including Waitrose and Morrisons. The village's amenities such as local shops, a post office, and community activities which appeal to families and individuals seeking a rural lifestyle with convenient access to larger towns like Wymondham and Diss.

## The Property





Charming Three-Bedroom Period Cottage with Equestrian Facilities on a 0.99-Acre Plot

Nestled in a tranquil rural setting, this delightful three-bedroom period cottage is brimming with character and charm. Step inside to a large, welcoming entrance hall that sets the tone for the rest of the home. The cosy lounge features exposed beams and a striking feature fireplace with a wood burner—ideal for relaxing evenings. The character continues in the dining room, which also boasts exposed beams, a feature fireplace, and a wood burner, creating a warm and inviting space for entertaining. The country-style kitchen exudes rustic charm and flows into a utility room and a ground-floor bathroom. A separate study offers a quiet space for working from home or reading. The first floor is accessed via two separate staircases. One staircase leads to two double bedrooms and a well-appointed family bathroom, while the second staircase provides access to the spacious main bedroom.

This is a rare opportunity to own a unique home with extensive equestrian facilities and timeless period features.

#### The Outside

This charming property, ideally suited to equestrian enthusiasts, is set within a generous 0.99-acre plot, offering a blend of functionality and picturesque views. It boasts two well-appointed stables, a dedicated tack room, a convenient store room, and a two-bay cart lodge, perfect for housing equipment or vehicles. The fenced paddock provides ample space for grazing or training, while the scenic field views at the rear enhance the tranquil setting. The front of the property features a shingle driveway, leading to a five-bar gate that grants direct vehicle access to the cart lodge and stabling area, ensuring both privacy and ease of access.

#### Freehold

#### Services

Mains electric, oil central heating, mains water and mains sewers

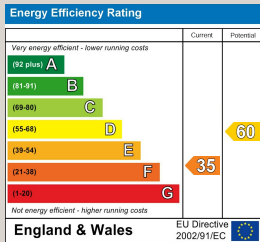
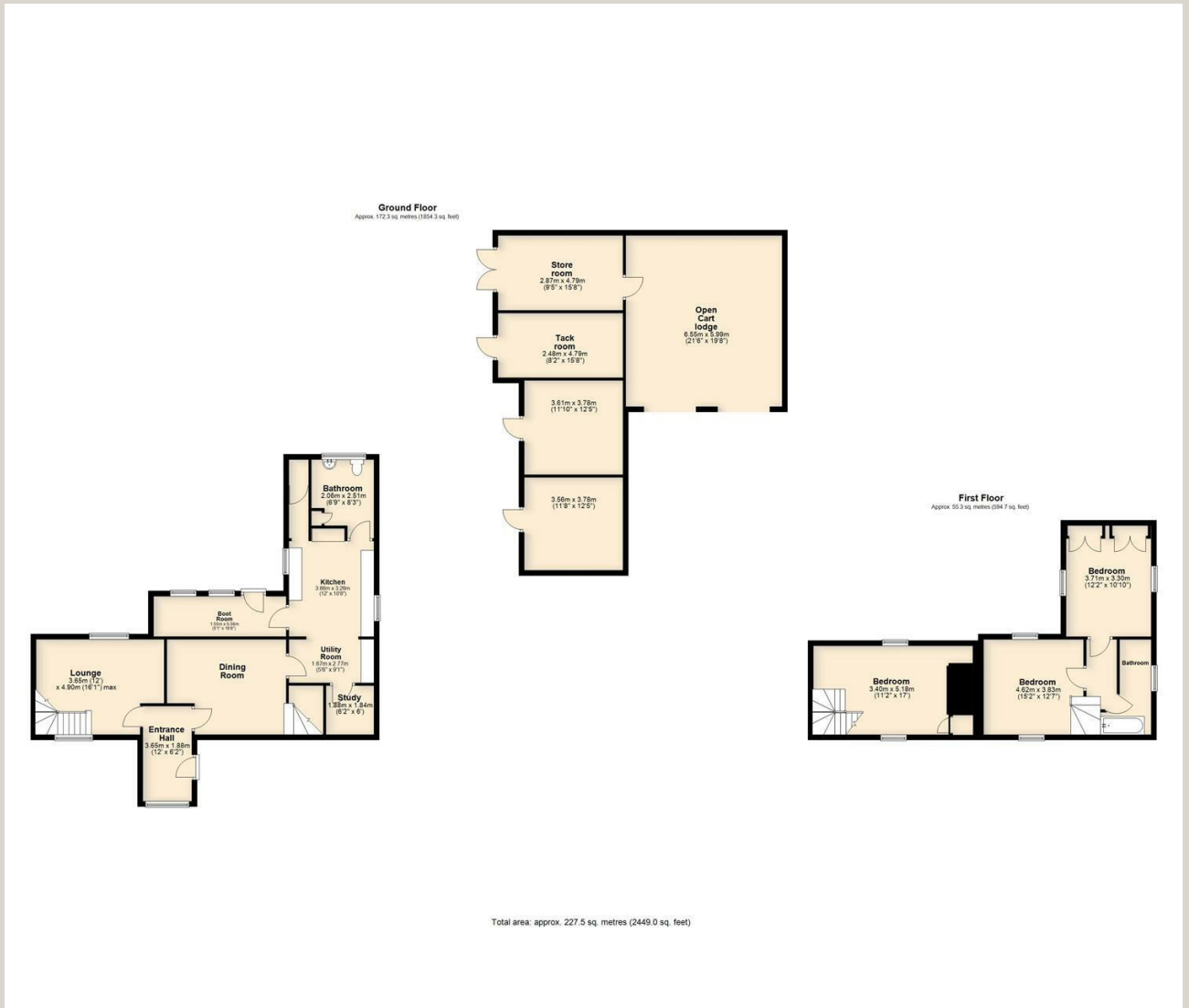
#### How to get there

[what3words///noodle.essay.gossiping](https://www.what3words.com/what3words///noodle.essay.gossiping)

#### Viewing strictly by appointment

#### Anti-Money Laundering, Terrorist Financing and Transfer of funds Regulations 2017.

In line with the regulations, TW Gaze are legally required to carry out AML due diligence checks on all proposed legal purchasers involved in the transaction. A charge of £25.00 + VAT (£30.00 Inc VAT) processing fee is applicable for each purchaser once an acceptable offer is agreed.



33 Market Street  
Wymondham  
Norfolk  
NR18 0AJ  
01953 423 188  
info@twgaze.co.uk