

## Thetford Road New Malden KT3

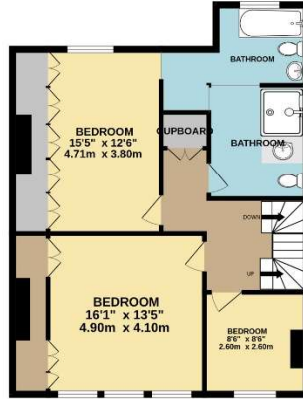
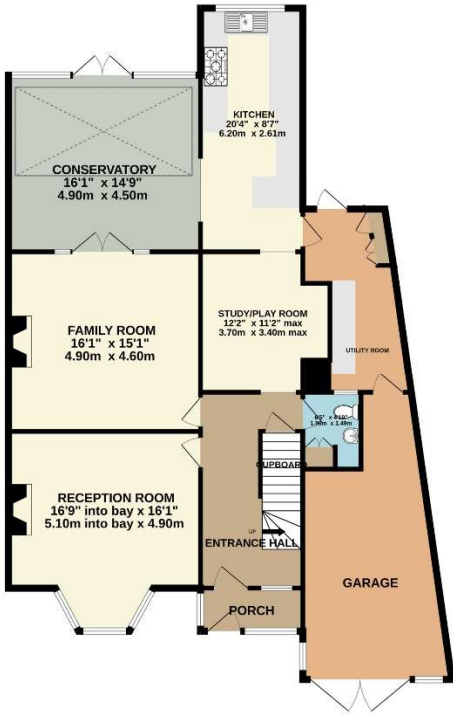


- **Large Semi-Detached Family Home**
- **A Wealth of Charm and Character**
- **Close to High Street, Station & Schools**
- **Four Bedrooms. Three Bathrooms**
- **Wonderful Large Garden**
- **Large Workshop/Garage (not for car use)**

**Price £3,750 pcm**

A wonderful, period family home set in this highly desirable location and offering a wealth of charm and character and the ground floor in particular offers very spacious accommodation. There are two large reception/family rooms, a large conservatory/dining room, a fitted kitchen, cloakroom and utility room plus a further study/play room and upstairs over two floors there are four bedrooms and three bathrooms. Further benefits include a great size workshop/garage (not suitable for car use), parking for several cars and a beautifully kept and very large rear garden. The house is well presented throughout and provides superb family space and it is located within touching distance of all the excellent amenities, including the High Street, station and schools. The property is primarily unfurnished but there are some items that can remain and it is available now. Security deposit £4,326 (based on the asking price). Council tax band G. EPC rating TBC





TOTAL FLOOR AREA: 2598 sq.ft. (241.4 sq.m.) approx.  
 Whilst every attempt has been made to ensure the accuracy of the floorplan contained here, measurements of doors, windows, rooms and any other items are approximate and no responsibility is taken for any error, omission or mis-statement. This plan is for illustrative purposes only and should be used as such by any prospective purchaser. The services, systems and appliances shown have not been tested and no guarantee as to their operability or efficiency can be given.  
 Made with Metroplan ©2020







