

## Kenwyn Road, SW4

### £400,000

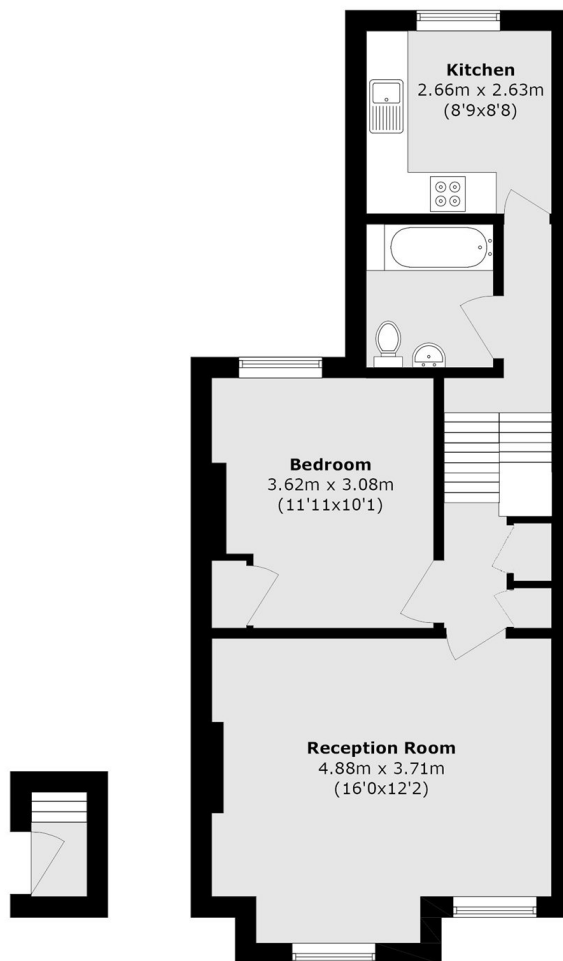
A well-presented one bedroom top floor apartment set within an attractive period conversion on the sought after Kenwyn Road. This charming property offers a bright and well proportioned living space, benefiting from its elevated position which allows for an abundance of natural light throughout. The apartment comprises a spacious reception room, a well appointed kitchen, a comfortable double bedroom, and a modern bathroom.

Kenwyn Road falls within the catchment of Clapham Manor Primary School (Ofstead outstanding) and offers superb access to the many local shops, restaurants and bars. Clapham North Underground Station (Northern Line) just a short stroll away.

### Features

- Chain Free
- Share of Freehold
- Split Level
- One Bedroom

# Kenwyn Road, London, SW4



**Second Floor**

**Third Floor**

Total area (approx.): 52.5 sq. m (565.1 sq. ft)