



18 Ashfield Terrace, Harrogate

£150,000 Offers Over



**YOUR AWARD
WINNING AGENT**

#DARINGTOBEDIFFERENT



A two-bedroom mid-terrace property situated in a convenient position just off King's Road, within a ten-minute walk of Harrogate town centre and its wide range of amenities. Externally, the property benefits from a forecourt garden to the front and an enclosed rear courtyard. On-street parking is available nearby.

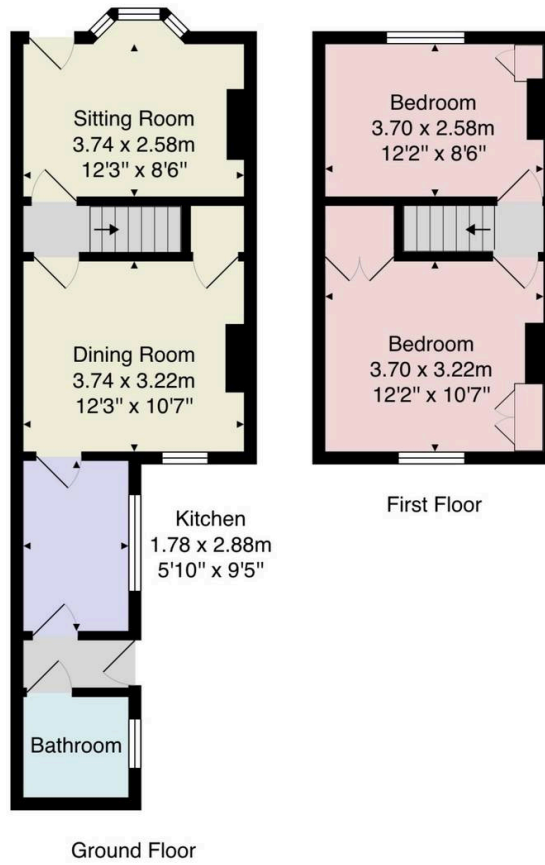
Council Tax band: B

Tenure: Freehold



Offered with no onward chain, this property is likely to appeal to investors, developers and buyers seeking a renovation project in a highly convenient location. The property now requires full renovation but presents an excellent opportunity to create a superb home. The accommodation comprises a sitting room, dining room, kitchen and bathroom. To the first floor are two double bedrooms.





Total Area: 62.2 m² ... 670 ft²

All measurements are approximate and for display purposes only.

No liability is accepted by either the agency or Box Property Solutions Ltd as to the exact measurements of the rooms.
Box Property Solutions Ltd retains the copyright on this plan and allows agents to use it with agreed permission.

