



Wandsworth Common West Side
London, SW18

CHESTERTONS





The reception room is a fantastic size and benefits from large windows overlooking the Common, allowing plenty of natural light to pour through the space. Character features including decorative coving, built-in shelving, and a feature fireplace add to the overall charm of the property.

The separate kitchen has been fitted with integrated appliances including a gas hob, oven, dishwasher, and useful storage throughout. French doors lead out onto a private balcony, providing a pleasant outdoor seating area.

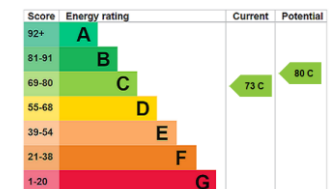
There are two good-sized double bedrooms, both with built-in wardrobes, alongside a modern bathroom fitted with a bath and overhead shower. Additional storage can also be found within the hallway.

Ideally located for both Wandsworth Town and Clapham Junction stations, the property is well placed for commuters while also being moments from the cafés, restaurants, and shops of St John's Hill and Northcote Road.

Wandsworth Common itself is directly opposite and offers extensive green open space, tennis courts, playgrounds, and a café.

- Two double bedrooms
- Share of Freehold
- Views across Wandsworth Common
- Private balcony
- Spacious first floor apartment
- Character features throughout

Offers in excess of
£600,000



Tenure: Share of Freehold 991 years remaining

Ground Rent: peppercorn

Local Authority: London Borough of Wandsworth

Council Tax Band: E

Chestertons Wandsworth Sales

47 East Hill

London

SW18 2QE

wandsworth@chestertons.co.uk

0208 104 7530

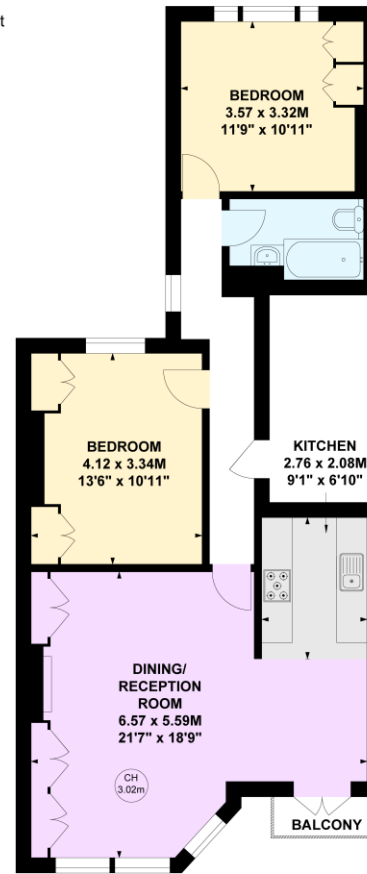
chestertons.co.uk

Wandsworth Common West Side, SW18

Approximate gross internal area

73.11 sq m / 787 sq ft

Key :
CH - Ceiling Height



First Floor

Not to scale, for guidance only and must not be relied upon as a statement of fact.
All measurements and areas are approximate only

Chesterton UK Services Limited trading as Chestertons for themselves and for the vendor of this property whose agents they are, give notice that (i) these particulars do not constitute any part of an offer or contract, (ii) all statements contained within these particulars are made without responsibility on the part of Chestertons or the vendor, (iii) whilst made in good faith, none of the statements contained within these particulars are to be relied upon as a statement or representation of fact, (iv) any intending purchasers must satisfy themselves by inspection or otherwise as to the correctness of each of the statements contained within these particulars, (v) the vendor does not make or give either Chestertons or any person in their employment any authority to make or give representation or warranty whatsoever in relation to this property. Wide angle lenses may be used. ©Copyright Chestertons | Chesterton UK Services Limited | Registered Office 5th Floor, The Lantern, 75 Hampstead Road, London, NW1 2PL Registered Company Number 05334580.



This paper is
100% recyclable