



Arundel Road, Brighton



PCM
£1,850 PCM

- Two-bedroom maisonette
- Separate kitchen and spacious living room
- Two well-proportioned bedrooms
- Modern family bathroom
- Prime Kemp Town location
- EPC energy rating D (61)
- Available now

Robert Luff & Co are delighted to offer this beautiful two-bedroom maisonette, ideally located in the heart of Kemp Town. Just a stone's throw from the seafront, the property also benefits from a supermarket and a wide range of local amenities right on its doorstep.

The accommodation comprises a separate kitchen, spacious living room, two well-proportioned bedrooms, and a modern family bathroom.

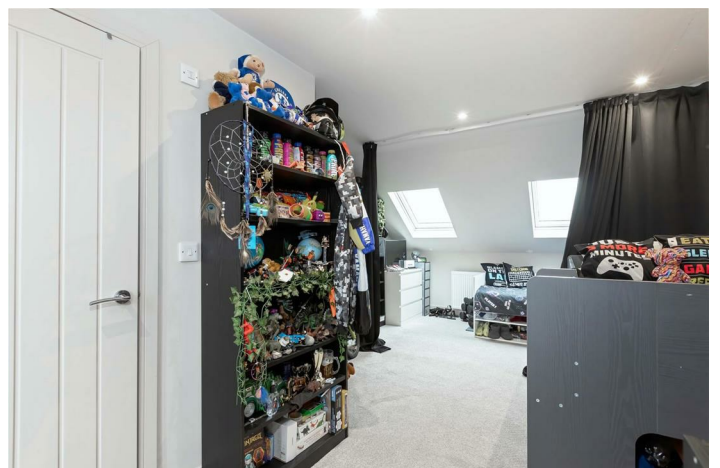
Available now.

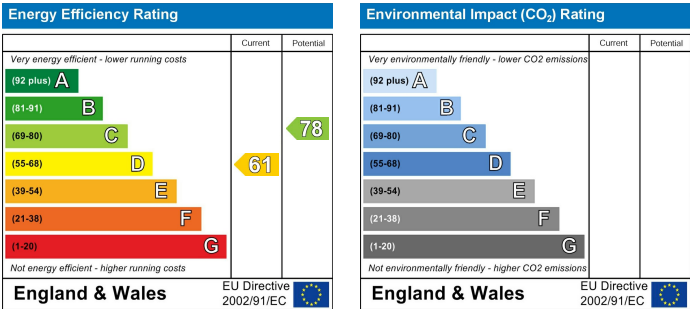
T: 01903 331247 E: info@robertluff.co.uk
www.robertluff.co.uk

**Robert
Luff & Co**
Sales | Lettings | Commercial



Accommodation





The information provided about this property does not constitute or form any part of an offer or contract, nor may it be regarded as representations. All interested parties must verify accuracy and your solicitor must verify tenure/lease information, fixtures and fittings and, where the property has been extended/converted, planning/building regulation consents. All dimensions are approximate and quoted for guidance only as are floor plans which are not to scale and their accuracy cannot be confirmed. References to appliances and/or services does not imply that they are necessarily in working order or fit for the purpose.