



# Northways

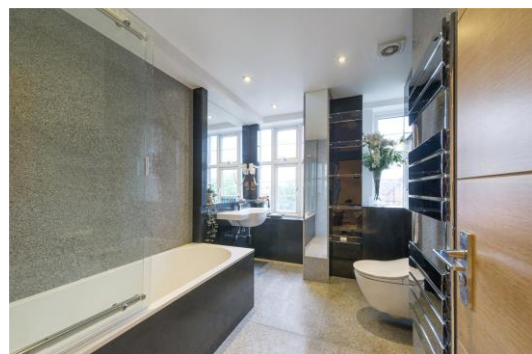
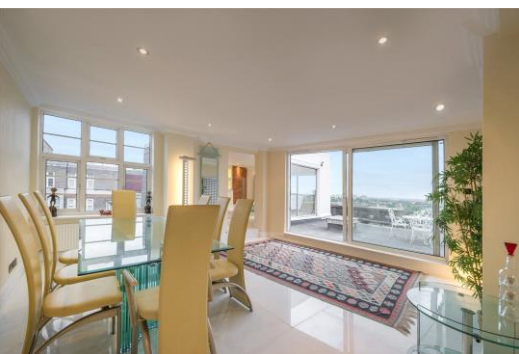
College Crescent, NW3

£4,000 per month  
(£923.08 per week)

\*VIDEO TOUR AVAILABLE. A magnificent 2 double bedroom penthouse apartment comprising approximately 1450 sq ft with amazing triple aspect views across London. The property has been refurbished to the highest of standards and has marble floors throughout, set on the 5th floor of this purpose built building benefiting from a lift, porter and entry phone. The property is situated close to Swiss Cottage (Jubilee Line) and within walking distance to shops and restaurants of fashionable Belsize Park (Northern Line). Accommodation comprises reception room with working gas fire place, smart dining room, fully fitted kitchen with Gaggenau appliances and granite worktops, master bedroom with fitted wardrobes and en-suite shower room, further double bedroom, ultra modern bathroom. Heating and hot water is included in the rental.

CHESTERTONS





# Northways

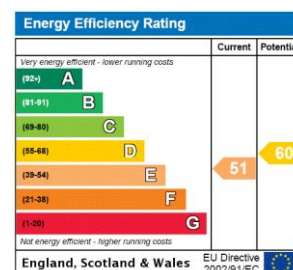
## College Crescent, NW3

- A Refurbished 5th Floor Penthouse Apartment in Purpose Built Block
- 2 Bedrooms, 2 Bathrooms, 2 Receptions, State of the Art Fully Fitted Kitchen
- Amazing Triple Aspect Views across London, Marble Floors, Lift, Entry Phone
- Situated Close to Swiss Cottage (Jubilee Line) Walking Distance to Shops/Restaurants of Fashionable Belsize Park (Northern Line)





**Minimum Term:** 18 months  
**Deposit Required:** £4,615.38  
**Local Authority:** London Borough Of Camden  
**Council Tax Band:** E  
**EPC Rating:** E  
**Furnished**

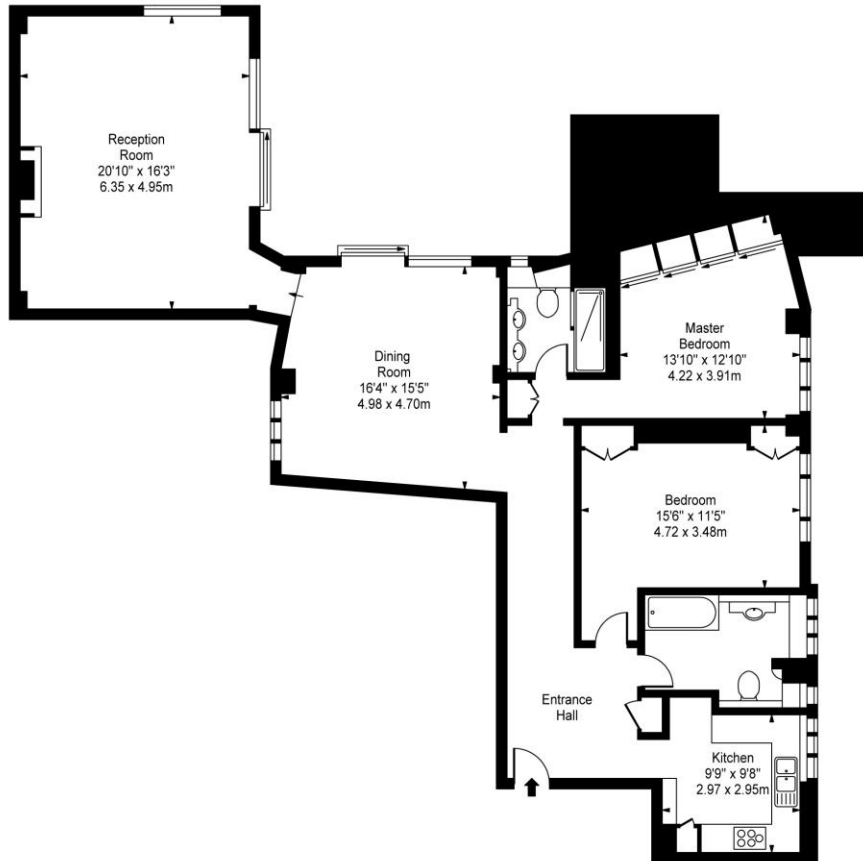


### Chestertons Hampstead Lettings

55-56 Hampstead High Street  
 Hampstead  
 London  
 NW3 1QH  
[hampsteadlettingsusers@chestertons.co.uk](mailto:hampsteadlettingsusers@chestertons.co.uk)  
 02077941125  
[chestertons.co.uk](http://chestertons.co.uk)

Additional tenant charges apply (fees apply to non-AST tenancies only)  
 Tenancy Agreement Fee: £300  
 References per Tenant/Guarantor: £60  
 Inventory check (approx. £100 – £250 inc. VAT)  
[chestertons.co.uk/property-to-rent/applicable-fees](http://chestertons.co.uk/property-to-rent/applicable-fees)

**Northways,  
College Crescent, NW3**



Fifth Floor

Approx Gross Internal Area **1422 Sq Ft - 132.10 Sq M**

For Illustration Purposes Only - Not To Scale  
[www.goldlens.co.uk](http://www.goldlens.co.uk)  
 Prepared for Chestertons  
 Ref. No. 003610M

