



HEREFORD ROAD, W2

£625,000

Excellent reception space
Westerly aspect
Large windows
Very spacious
Just off Westbourne Grove
EPC- D



ABOUT THE PROPERTY

A very spacious and light filled one bedroom, third floor apartment (with second floor entrance) superbly positioned just off Westbourne Grove.

The property is superbly positioned just south of Westbourne Grove with its wealth of fantastic boutique shops, cafes, and restaurants on the doorstep, whilst the fabulous green open spaces of Hyde Park are just a short stroll away.

There are excellent transport links available from Notting Hill Gate and Bayswater, in addition to the Elizabeth line and Heathrow Express and Paddington.



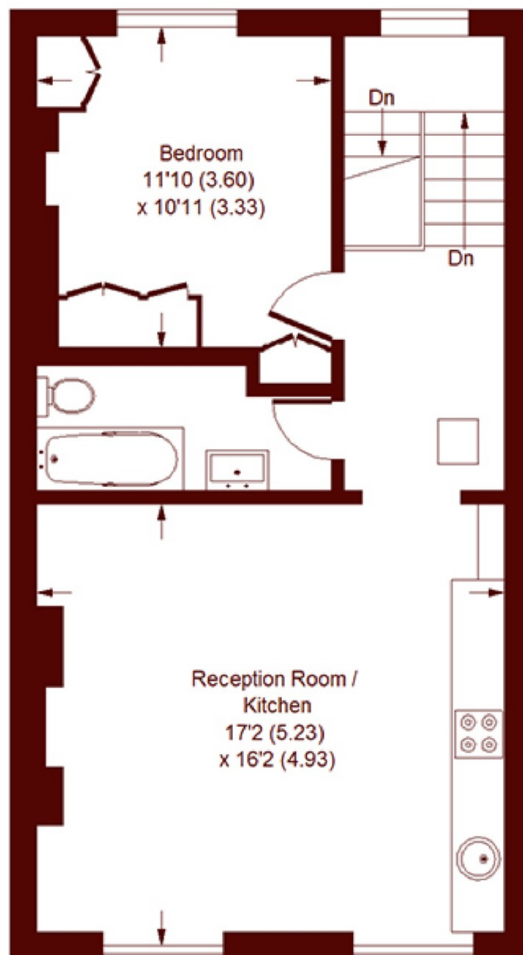
STEP INSIDE HEREFORD ROAD

Hereford Road, W2

APPROX. GROSS INTERNAL FLOOR AREA
572 SQFT / 53.1 SQM



SECOND FLOOR



THIRD FLOOR

Whilst every attempt has been made to ensure the accuracy of the floor plan, measurements are approximate and not to scale. No guarantee is given on the total square footage of the property quoted on the plan. Figures given are for guidance. Plan is for illustration purposes only, not to be used for valuations.

Notting Hill
020 7313 2890

Energy Rating: D We aim to make our particulars both accurate and reliable. However, they are not guaranteed; nor do they form part of an offer or contract. If you require clarification on any points then please contact us, especially if you're traveling some distance to view. Please note that appliances and heating systems have not been tested and therefore no warranties can be given as to their good working order

MARSH &
PARSONS