

Alternative Available



## Price

£1,500 PCM

Fees Apply



Available 29/06/26

Williamson Road Lydd  
On Sea TN29

*Wards*

Helping you move forwards



## Main Features

- Detached Bungalow
- Quiet sought after location
- Walking distance from local ship and beach
- Well presented throughout
- Front and Rear garden
- Garage and Off road parking



Deposit required is £1,730.77  
Shepway District - Council Tax Band Tax Band C

Renting a property is a big commitment and we recommend that you visit the local authority website and these websites which offer helpful information and advice about letting

[www.gov.uk/government/publications/how-to-rent](http://www.gov.uk/government/publications/how-to-rent)

[www.gov.uk/private-renting](http://www.gov.uk/private-renting)

[www.wardsofkent.co.uk/renting/tenancy-fees-individuals/](http://www.wardsofkent.co.uk/renting/tenancy-fees-individuals/)

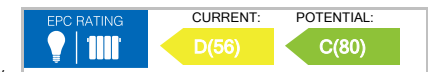
[www.gov.uk/green-deal-energy-saving-measures](http://www.gov.uk/green-deal-energy-saving-measures)

Call Ashford 01233 639654 ■ [wardsofkent.co.uk](http://wardsofkent.co.uk)

IMPORTANT INFORMATION: Please contact our Lettings Team who will confirm the total costs involved in renting this property. For clarification, we wish to inform the prospective tenant that we have prepared these details as a general guide. The agent has not carried out a detailed survey nor tested the services, appliances, or specific fittings (unless otherwise stated), and no warranty can be given as to their condition. All room measurements are taken at floor level. We strongly recommend that all the information which we provide about the property is verified by yourself and your advisers. The contents of this publication are © Wards, 2015. Wards is a trading name of Arun Estates Limited Registered in England No. 2597969

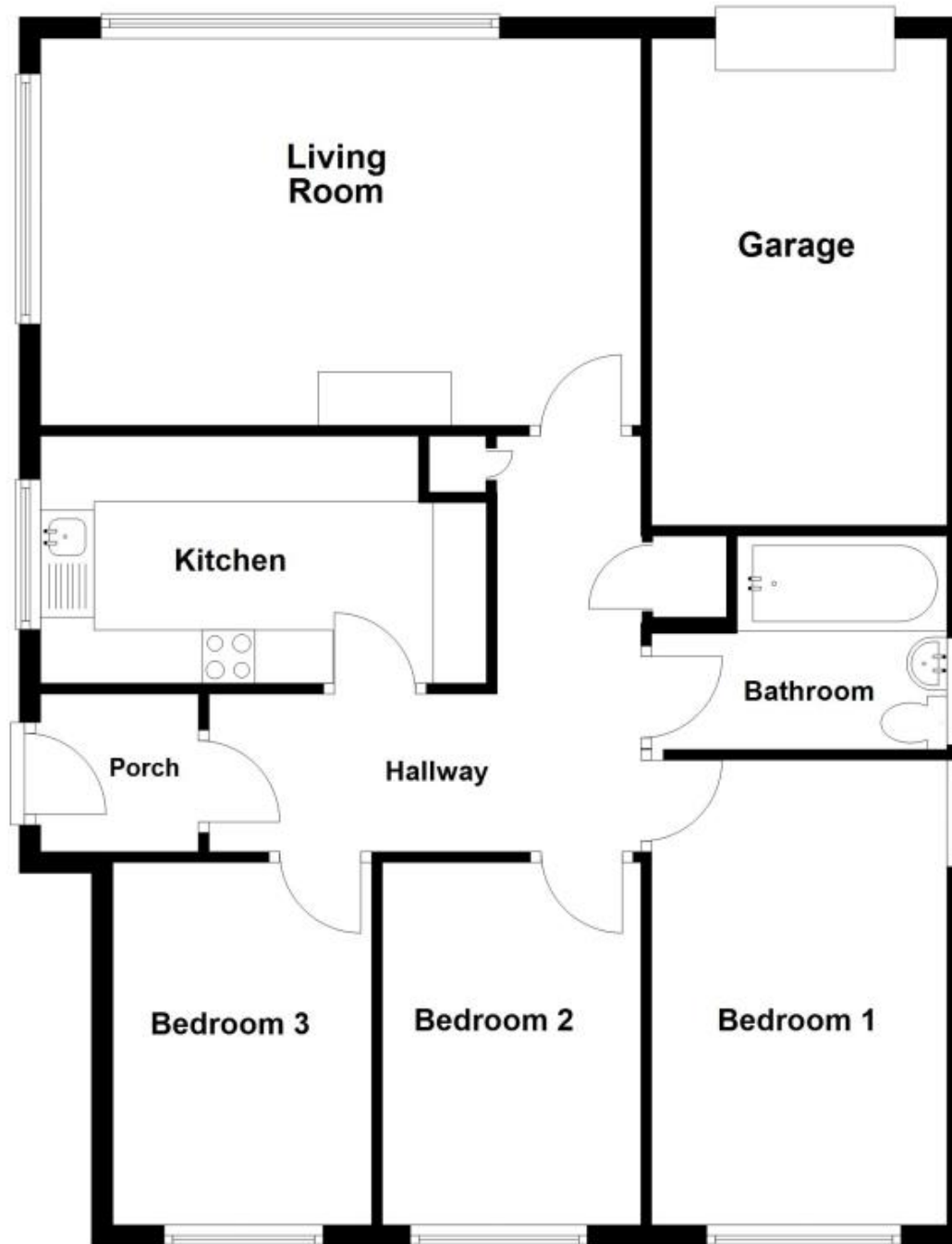
## Accommodation

- Porch
- Hallway
- Kitchen 4.38 x 2.32
- Lounge 5.67 x 3.63
- Bedroom One 4.36 x 3.46
- Bedroom Two 3.40 x 2.43
- Bedroom Three 3.40 x 2.41
- Bathroom 2.69 x 1.80
- Front & Rear Garden
- Garage & Driveway



# Floor Plan

Approx. 95.1 sq. metres (1024.1 sq. feet)



Total area: approx. 95.1 sq. metres (1024.1 sq. feet)