

**TOWN&COUNTRY**  
ESTATES



**Pintail Way, Westbury, Wiltshire BA13 3XP**

**£157,500**



## LOCATION

Westbury is a small medieval town that lies not far from its famous White Horse hill-carving at the western extremity of Salisbury Plain. Westbury offers a range of shopping and leisure facilities including, library, sports centre, schools, churches, doctors, dentist surgeries, post office and the oldest swimming pool in the country. The main railway line has fantastic links to Bath, Bristol and London. Travelling by car to Salisbury, Bristol and Swindon takes approximately one hour making it very desirable for commuters.

## DESCRIPTION

**NO ONWARD CHAIN** - A well presented one bedroom terraced home, situated in a quiet cul-de-sac, on the popular Bitham Park development. The accommodation comprises a lounge, kitchen/dining room, bedroom with built-in wardrobe and a modern bathroom. Further benefits include uPVC double glazing, gas central heating, gravelled area to the front and an allocated parking space.

## LOUNGE

14'6" x 9'0"

There is a uPVC double glazed window to the front, stairs leading to the first floor, thermostat heating controls, TV point, telephone point, ornamental ceiling light and two radiators.

## KITCHEN/DINING ROOM

14'6" x 5'8"

The kitchen/dining room has a uPVC double glazed window to the side, a range of matching base and wall units with work tops, stainless steel inset sink unit, an electric fan assisted oven with Lamona halogen hob, chimney extractor fan with light over, extractor fan, tiled splashbacks, space for fridge freezer, plumbing for a washing machine, radiator, Worcester wall mounted gas boiler supplying radiator and a door to the under stairs cupboard.

## FIRST FLOOR LANDING

On the first floor there is a smoke alarm, radiator, doors leading to the master bedroom, bathroom and airing cupboard.

## BEDROOM

12'0" x 9'2"

There is a uPVC double glazed window to the front, built-in wardrobe, radiator and access to loft space.

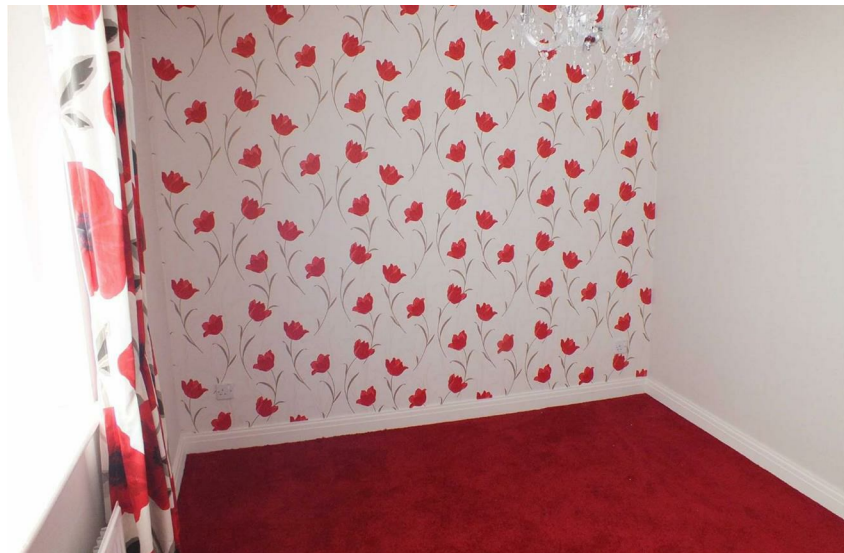
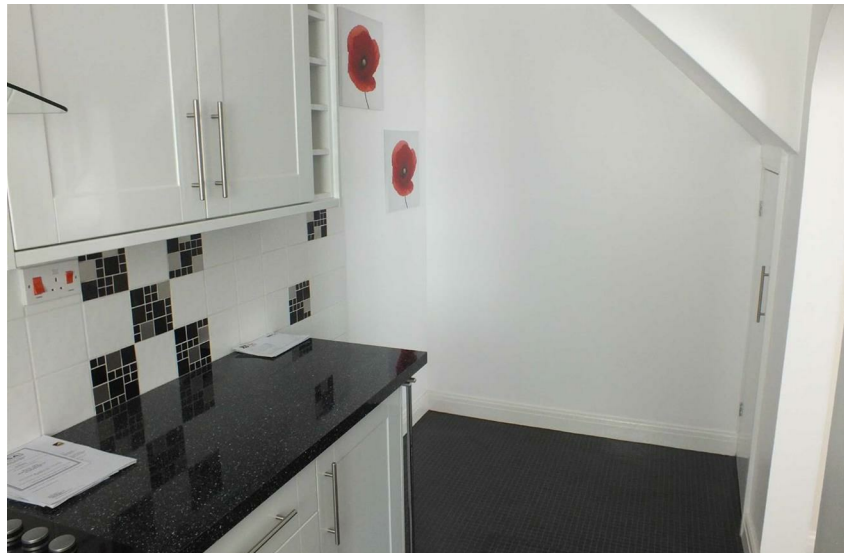
## BATHROOM

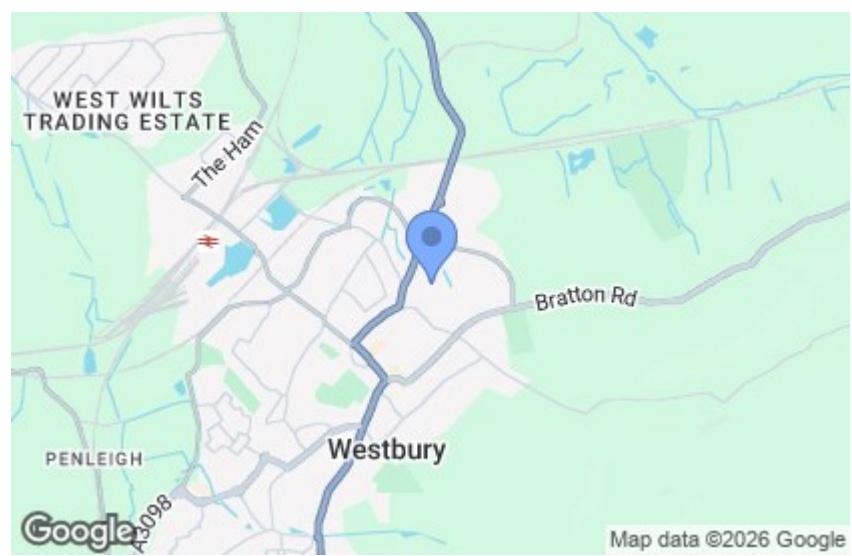
There is an obscure uPVC double glazed window to the front, panelled bath with electric shower over and chrome taps, pedestal basin with chrome tap, close couple W.C, tiled splashbacks, extractor fan, ornamental ceiling light and an LED mirror.

## ADDITIONAL INFORMATION

Council Tax Band - A

EPC Rating - C



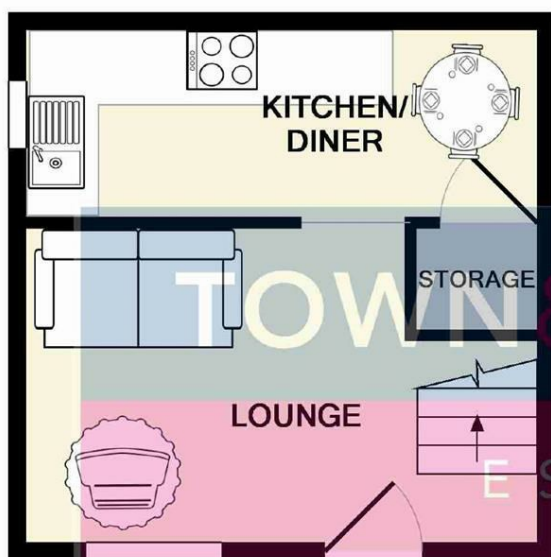












GROUND FLOOR



1ST FLOOR

SALES & MORTGAGES & LETTINGS

Whilst every attempt has been made to ensure the accuracy of the floor plan contained here, measurements of doors, windows, rooms and any other items are approximate and no responsibility is taken for any error, omission, or mis-statement. This plan is for illustrative purposes only and should be used as such by any prospective purchaser. The services, systems and appliances shown have not been tested and no guarantee as to their operability or efficiency can be given

Made with Metropix ©2015





1ST FLOOR



GROUND FLOOR

For illustrative purposes only. Decorative finishes, fixtures, fittings and furnishings do not represent the current state of the property. Measurements are approximate. Not to scale  
Made with Metropix ©2015

TROWBRIDGE OFFICE  
9 Fore Street, Trowbridge,  
Wiltshire BA14 8HD

WESTBURY OFFICE  
16 High Street, Westbury,  
Wiltshire BA13 3BW

Teleph one: 01 225 7 766 99  
Email: [trowbridge@townandcountryestates.com](mailto:trowbridge@townandcountryestates.com)

Telephone: 0 137 3 8244 44  
Email: [westbury@townandcountryestates.com](mailto:westbury@townandcountryestates.com)

[www.townandcountryestates.com](http://www.townandcountryestates.com)

# SALES & MORTGAGES & LETTINGS

## TOWN & COUNTRY MORTGAGES

### FEE FREE Mortgage Services

- RE-MORTGAGES
- FIRST TIME BUYER
- HOME MOVER
- BUY TO LET



YOUR PROPERTY MAY BE REPOSSESSED IF YOU DO NOT  
KEEP UP REPAYMENTS ON YOUR MORTGAGE

OFFICE, HOME AND TELEPHONE  
APPOINTMENTS AVAILABLE

CONTACT US ON:  
01225 776699

BOOK ONLINE:  
[www.townandcountrymortgages.net](http://www.townandcountrymortgages.net)

FIND US ON  

OLIVER BROWNING  
Managing Director

NB. Town and Country Estates have not tested any equipment, fixtures, fittings or services and cannot guarantee that they are in working order. Buyers are advised to seek professional advice from their solicitors or surveyor. Internal measurements should not be relied upon for fitting of carpets or furniture without checking. These details have been prepared in good faith and whilst believed to be correct give notice that none of the statements are to be relied upon as statements or representations of fact. Some statements are inevitably subjective and are therefore the view of the author at the time the information was prepared. If any items are particularly important to you then please check with this office first, especially if travelling some distance to view.