



# HORSEFERRY PLACE, SE10

£575,000

Modern apartment  
Riverside development  
Two double bedrooms  
Two Juliet balconies  
Allocated parking space  
Energy rating: d

@marshandparsons  
marshandparsons.co.uk

MARSH &  
PARSONS



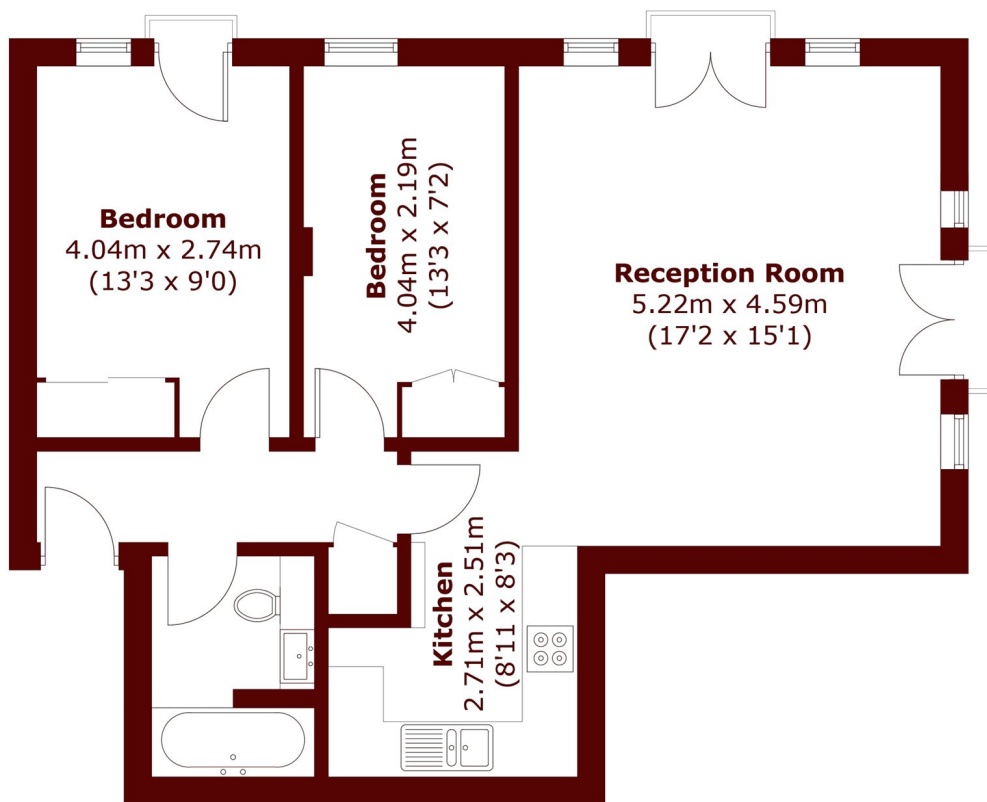
# ABOUT THE PROPERTY

A bright and spacious modern apartment including an allocated underground parking space and situated within a small building on the riverside just a short walk from the Cutty Sark. Residents have a concierge on-site and a lift. The interior comprises a very spacious lounge/diner featuring double aspect, open plan kitchen, a family bathroom and two double bedrooms. Added benefits include underfloor heating, two Juliet balconies and fitted storage.

Cutty Sark DLR station, located in the town centre is a very short walk away, where you will also find the covered market, direct access into Greenwich park, river front pubs, restaurants, gyms and supermarkets.



# STEP INSIDE HORSEFERRY PLACE



Total area (approx.): 63.5 sq. m (683.5 sq. ft)

Greenwich  
0208 742 4091

Energy Rating: D We aim to make our particulars both accurate and reliable. However, they are not guaranteed; nor do they form part of an offer or contract. If you require clarification on any points then please contact us, especially if you're traveling some distance to view. Please note that appliances and heating systems have not been tested and therefore no warranties can be given as to their good working order

MARSH &  
PARSONS