

Ashburn Gardens, SW7

£692 Per week

A recently refurbished property offering two bedrooms and two bathrooms. The home features wooden flooring throughout, skylights that provide ample natural light, and a small patio at the entrance.

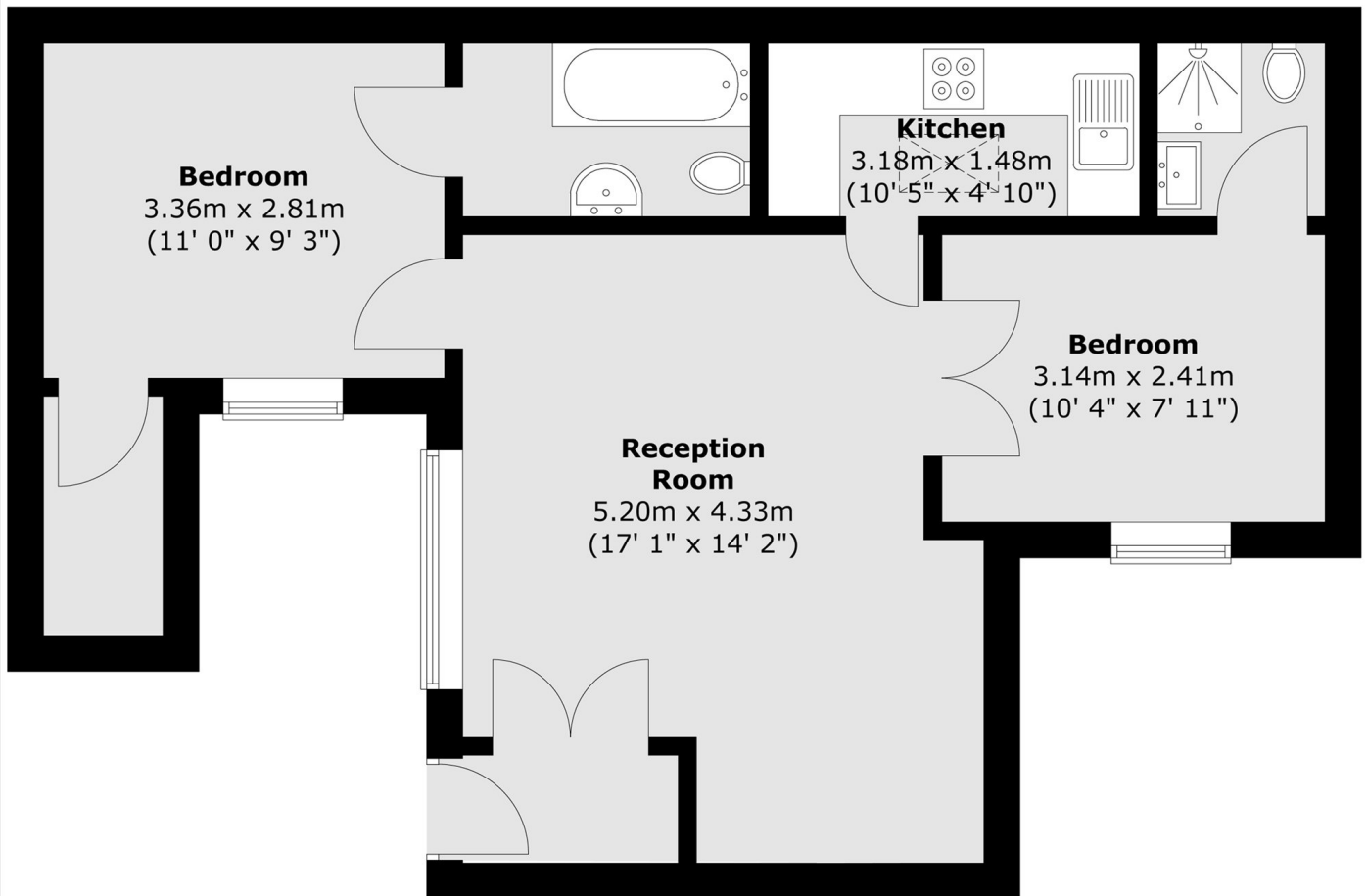
Located just off Gloucester Road, the property benefits from convenient access to a wide range of restaurants and shops, including a Waitrose supermarket and a Boots pharmacy. Hyde Park and Kensington High Street are also situated nearby.

Features

- Two Double Bedrooms
- Two Bathrooms
- Wood Flooring
- Skylights Throughout
- Ample Storage

Ashburn Gardens, London, SW7

Lower Ground Floor



Total area (approx.) : 53.3 sq. m (574 sq. ft)