



## Pembridge Villas, W11

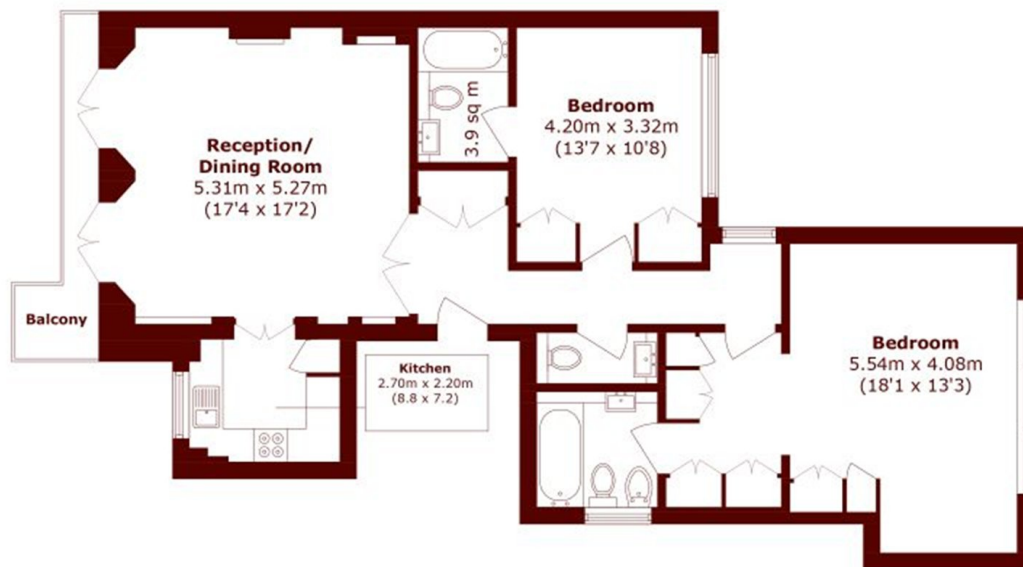
£1,600 per week (£7,366 pcm)

2 2 1 C

- Two bedrooms
- Two bathrooms

- First Floor
- Balcony

- High Ceilings
- Prestigious location



Total area (approx.): 101.0 sq. m (1087.1 sq. ft)  
Balcony area (approx.): 5.0 sq. m (53.8 sq. ft)

## Marsh & Parsons Notting Hill

2-6 Kensington Park Road,  
London, W11 3BU  
020 7313 2890

We aim to make our particulars both accurate and reliable. However, they are not guaranteed; nor do they form part of an offer or contract. If you require clarification on any points then please contact us, especially if you're traveling some distance to view. Please note that appliances and heating systems have not been tested and therefore no warranties can be given as to their good working order.