



Trusley Brook
Hilton Derby



Property Description

Charming Three-Bedroom Property on Trusley Brook, Hilton

This delightful three-bedroom home offers spacious living with a thoughtfully designed layout, perfect for modern family living. Upon entering, you are welcomed by a bright entrance hallway leading to a convenient downstairs WC, a well-appointed kitchen, a versatile dining room, and a comfortable lounge perfect for relaxing and entertaining.

Upstairs, you'll find three bedrooms, the master benefiting from an en-suite providing ample space for family or guests, and a modern family bathroom.

Externally, the property boasts a low-maintenance garden, ideal for outdoor relaxation, with easy access to the garage, currently utilised as storage. The front features a well-maintained garden and a private driveway providing off-road parking.

Located in the sought-after area of Hilton, this property benefits from excellent local amenities including shops, cafes, and highly regarded schools. Transport links are superb, with easy access to major road networks such as the A50 and A38, providing convenient routes to Derby, Burton upon Trent, and beyond.

Whether you're a growing family or seeking a comfortable home in a well-connected location, this property on Trusley Brook offers

everything you need for convenient, contemporary living.

Entrance Hallway

Lounge

12' 6" + bay x 10' 2" (3.81m + bay x 3.10m)

Dining Room

9' 3" x 10' 2" (2.82m x 3.10m)

Kitchen

13' 3" x 9' 6" (4.04m x 2.90m)

Landing

Master Bedroom With En-Suite

10' 4" x 10' 4" (3.15m x 3.15m)

Bedroom Two

8' 8" x 10' 3" (2.64m x 3.12m)

Bedroom Three

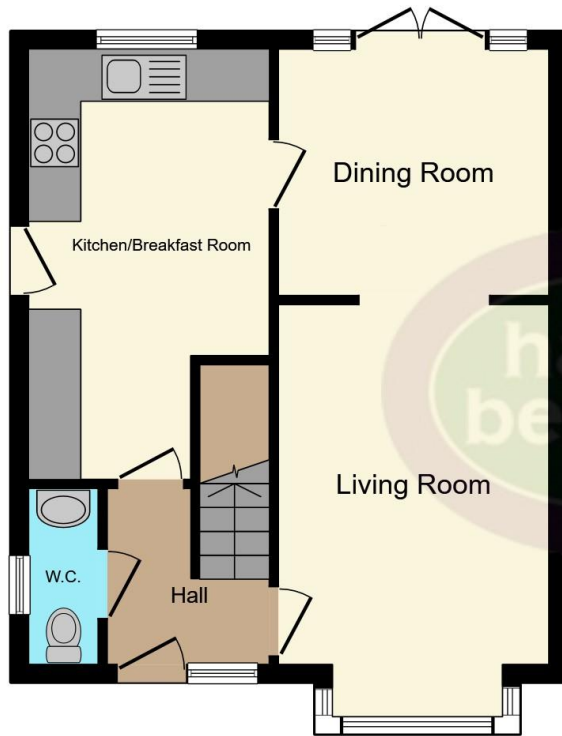
7' 5" x 9' 2" (2.26m x 2.79m)

Bathroom

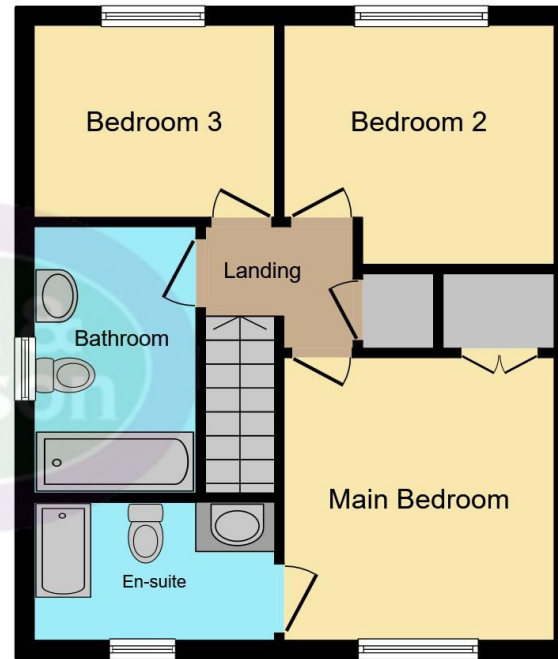








Ground Floor



First Floor

This floor plan is for illustrative purposes only. It is not drawn to scale. Any measurements, floor areas (including any total floor area), openings and orientation are approximate. No details are guaranteed, they cannot be relied upon for any purpose and they do not form part of any agreement. No liability is taken for any error, omission or misstatement. A party must rely upon its own inspection(s). Powered by www.focalagent.com

To view this property please contact Hall & Benson on

T 01332 555 945
E allestree@hallandbenson.co.uk

E7 Park Farm Centre Park Farm Drive
 DERBY DE22 2QQ

EPC Rating: C Council Tax
 Band: D

view this property online hallandbenson.co.uk/Property/ATR102031

Tenure: Freehold



1. MONEY LAUNDERING REGULATIONS Intending purchasers will be asked to produce identification documentation at a later stage and we would ask for your co-operation in order that there will be no delay in agreeing the sale. 2. These particulars do not constitute part or all of an offer or contract. 3. The measurements indicated are supplied for guidance only and as such must be considered incorrect. Potential buyers are advised to recheck measurements before committing to any expense. 4. We have not tested any apparatus, equipment, fixtures, fittings or services and it is in the buyers interest to check the working condition of any appliances.

Hall & Benson is a trading name of Connells Residential which is registered in England and Wales under company number 1489613, Registered Office is Cumbria House, 16-20 Hockliffe Street, Leighton Buzzard, Bedfordshire, LU7 1GN. VAT Registration Number is 500 2481 05.

See all our properties at www.hallandbenson.co.uk | www.rightmove.co.uk | www.zoopla.co.uk

Property Ref: ATR102031 - 0007