

# Parkheath

*Sold on Service*

---

**Fairhazel Gardens NW6**

**£2,450 PCM (£565 per week) - Camden Band E**

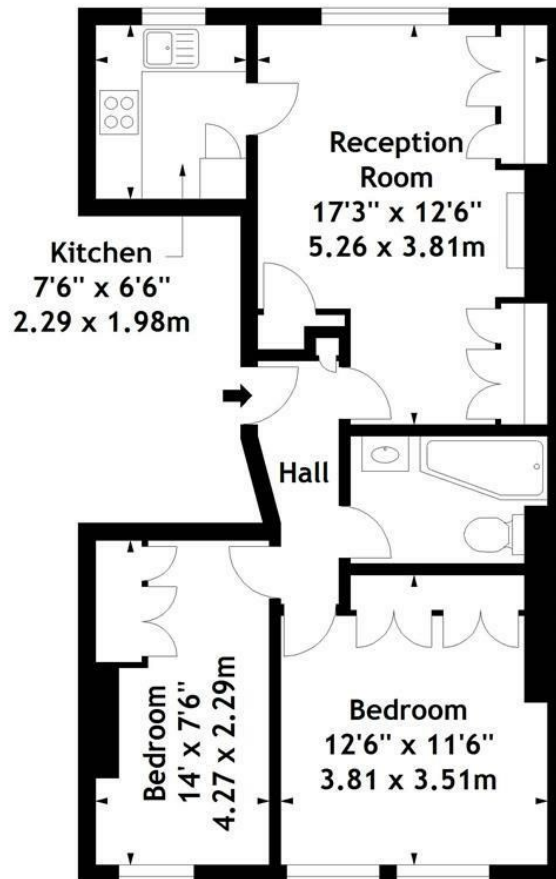


Spacious and bright apartment  
2 bedrooms with built in storage  
Situated in the South Hampstead Conservation area  
Semi open plan fitted kitchen  
7 minute walk to Finchley Road Underground

Newly decorated throughout  
Located on the 2nd floor of a period conversion  
Reception room with wood flooring  
Bathroom with WC  
EPC: Rating C, Council Tax: Camden Band E

West Hampstead Office 020 7794 7111

Fairhazel Gardens, NW6  
Approx. Gross Internal Area  
601 Sq Ft - 55.83 Sq M



### Second Floor

Measured in accordance with RICS guidelines. Every attempt is made to ensure accuracy, however all measurements are approximate. This floor plan is for illustrative purposes only and is not to scale.  
© Datography Ltd 2014  
Photographs \* Floorplans \* Virtual Tours  
Tel: 0845 643 4401 [www.datography.com](http://www.datography.com)

The particulars do not constitute part of an offer or contract. The particulars, including text, photographs and plans, are for the guidance only of prospective purchasers/tenants and must not be relied upon as statements of fact. The descriptions provided therein represent the opinion of the author and whilst given in good faith should not be construed as statements of fact. Nothing in these particulars shall be deemed a statement that the property is in good condition or otherwise or that any services or facilities are in good working order. All measurements are approximate