



New Kings Road, SW6

£1,000,000

A beautifully presented three-bedroom split-level period conversion maisonette, arranged across the upper three floors and offering just under 1,300 sq ft of well-balanced living accommodation. Combining characterful period features with generous proportions throughout, the property benefits from three double bedrooms, bright and spacious living areas, and a private roof terrace situated on the top floor

Ideally positioned on the prestigious New Kings Road, this property boasts an exceptional location just moments from an array of boutique shops, wine bars, pubs, and restaurants. Parsons Green and Fulham Broadway are both within easy walking distance, providing excellent transport links and a wide range of local amenities. The open green spaces of Eel Brook Common are also just a short stroll away.

Features

- Split Level Apartment
- Dual Aspect Kitchen Living
- Three Double Bedrooms
- Sold Chain Free
- Private Roof Terrace
- Meticulously Renovated



New Kings Road, SW6

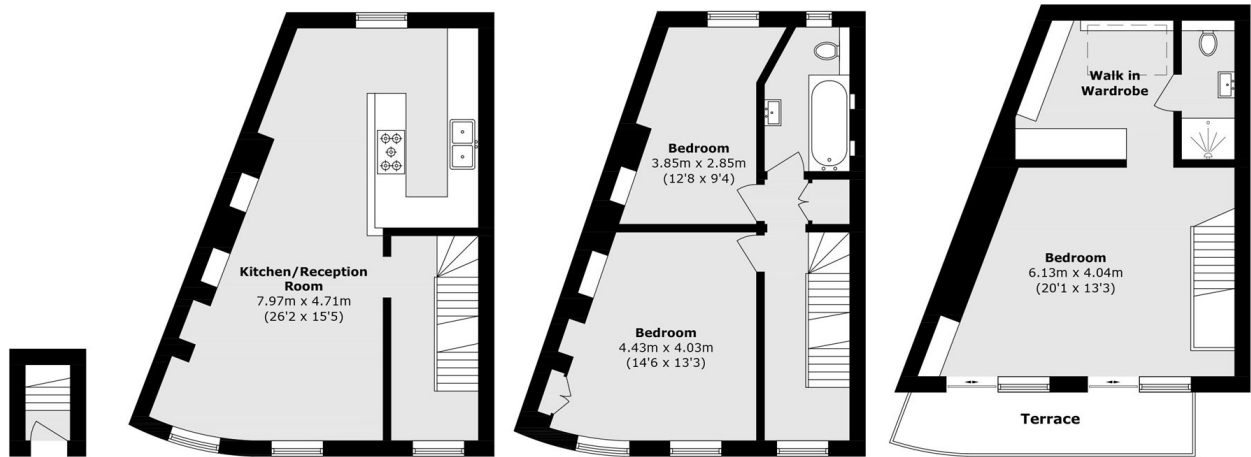
The private entrance from the ground floor leads up to the enviable dual-aspect semi open-plan kitchen/living room, occupying the entire first floor and offering an exceptional amount of entertaining and living space. The room is completed by a shaker-style kitchen with ample countertop and storage space.

The second floor comprises two double bedrooms, both benefiting from high ceilings and built-in wardrobe space. A family bathroom completes this floor.

On the top floor, you will find the principal bedroom suite, which benefits from air conditioning and a private roof terrace, along with a generous walk-in wardrobe and en-suite bathroom.



New Kings Road, London, SW6



Ground Floor

First Floor

Second Floor

Third Floor

Total area (approx.): 112.8 sq. m (1214.1 sq. ft)
Terrace area (approx.): 6.5 sq. m (69.9 sq. ft)