

HUNT FRAME

ESTATE AGENTS



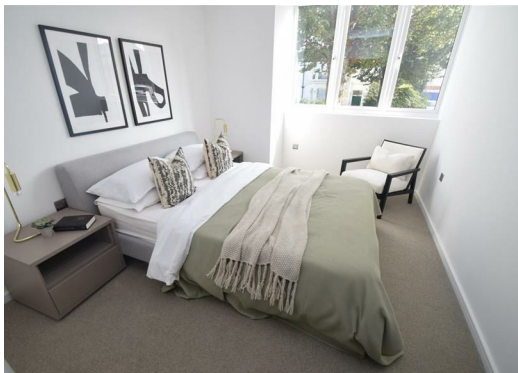
Berkeley House 26 Gildredge Road, Eastbourne, BN21 4SA £950 Per Month

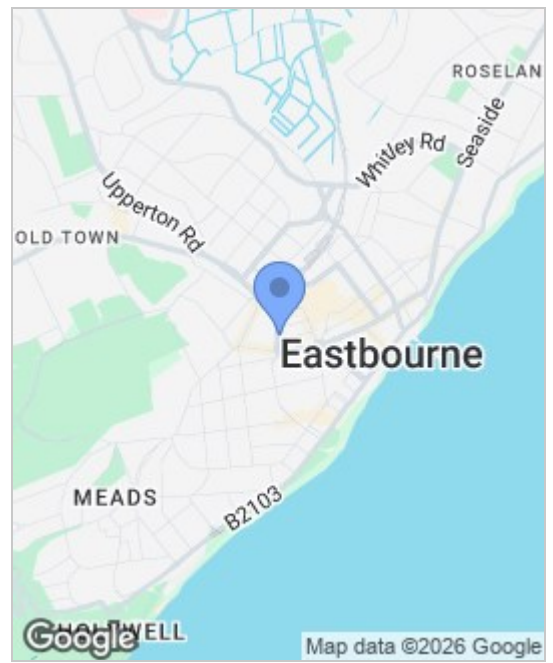


PLEASE CLICK 'REQUEST DETAILS' OR 'EMAIL AGENT' FOR AN APPLICATION FORM

A RECENTLY CONVERTED LUXURY, CONTEMPORARY STYLE ONE BEDROOM APARTMENT WITH PARKING situated in the heart of Eastbourne town centre within 200 yds of the Railway Station. Comprising stylish open plan lounge/kitchen with INTEGRATED APPLIANCES, bedroom and luxury bathroom. Third floor with lift. Also benefitting from an ALLOCATED PARKING SPACE.

1 week holding deposit £219.23





TOTAL APPROX. FLOOR AREA 421 SQ.FT. (39.1 SQ.M.)

Whilst every attempt has been made to ensure the accuracy of the floor plan contained here, measurements of doors, windows, rooms and any other items are approximate and no responsibility is taken for any error, omission, or mis-statement. This plan is for illustrative purposes only and should be used as such by any prospective purchaser. The services, systems and appliances shown have not been tested and no guarantee as to their operability or efficiency can be given
Made with Metropix ©2020

Energy Efficiency Rating		Environmental Impact (CO ₂) Rating			
	Current	Potential		Current	Potential
Very energy efficient - lower running costs			Very environmentally friendly - lower CO ₂ emissions		
(92 plus) A			(92 plus) A		
(81-91) B			(81-91) B		
(69-80) C			(69-80) C		
(55-68) D			(55-68) D		
(39-54) E			(39-54) E		
(21-38) F			(21-38) F		
(1-20) G			(1-20) G		
Not energy efficient - higher running costs			Not environmentally friendly - higher CO ₂ emissions		
England & Wales	EU Directive 2002/91/EC	81	England & Wales	EU Directive 2002/91/EC	85

These particulars, whilst believed to be accurate are set out as a general outline only for guidance and do not constitute any part of an offer or contract. Intending purchasers should not rely on them as statements of representation of fact, but must satisfy themselves by inspection or otherwise as to their accuracy. No person in this firm's employment has the authority to make or give any representation or warranty in respect of the property.