



Redmayne Arnold & Harris
estate agents, letting agents & surveyors

rah.co.uk



TO LET



Flat 1, Editha House Queen Ediths Way, Cambridge, CB1 8PJ

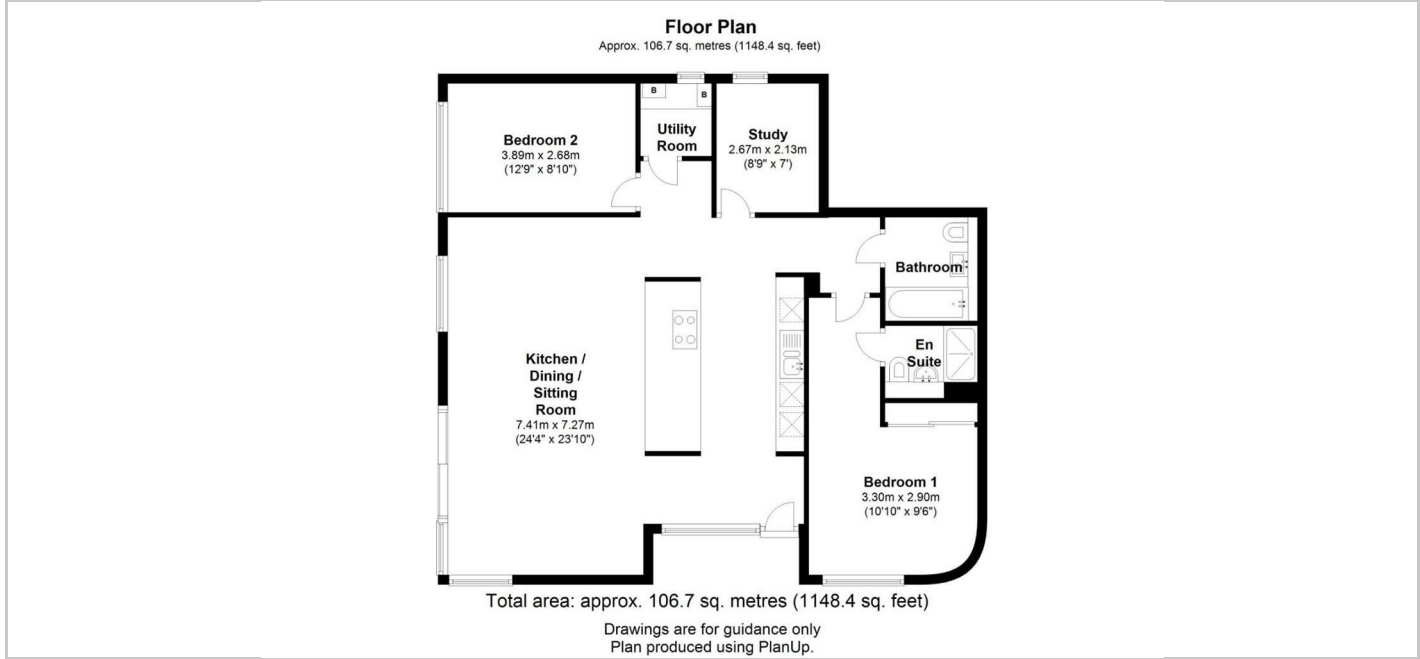
£2,100 PCM



THE PROPERTY

A three bedroom, ground floor apartment providing light, spacious and contemporary accommodation just moments away from Addenbrooke's Hospital, and less than 1.5 miles away from the City Centre. The property comprises open plan kitchen/dining/sitting room, utility room, two bedrooms- one with en-suite, study/ third bedroom and a family bathroom. There is also an allocated parking space. The property will be managed by RAH.

EPC Rating: B
 Council Tax band: F
 Deposit £2420
 Holding Deposit: £390
 Minimum tenancy length 12 months



SITUATION

Directions

