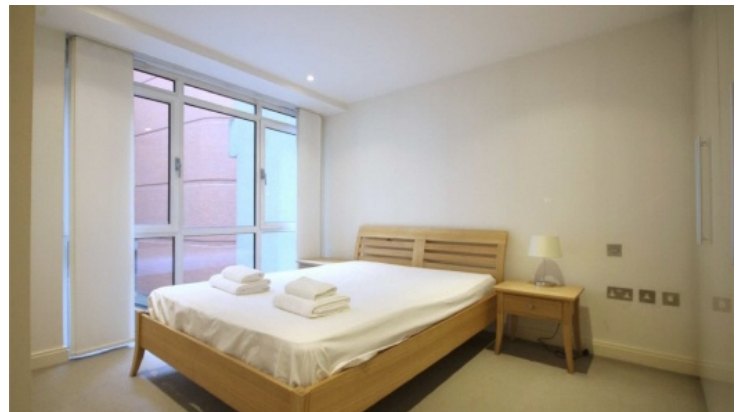


# Frank Harris & Co.



London, EC1A

£550 Per week

An attractive one bedroom apartment, in a modern development, well located for the City, Clerkenwell and the Old Street tech hub.



Glasshouse Yard is a small side street located off Aldersgate Street, just 200m from Barbican station.

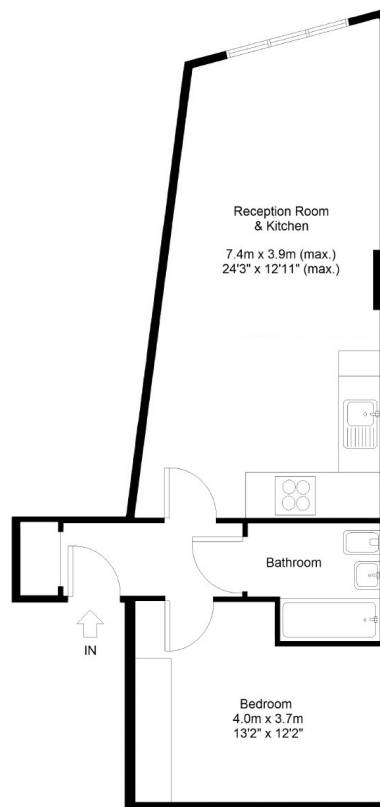
- One Bedroom • Modern Apartment • Open Plan Layout •
- Wood Floors • Quiet Location • Furnished •



# Frank Harris & Co.

## Glasshouse Yard EC1A

Total internal area(approx.):  
48.5sqm / 520sq.ft.



Typical example or generic floorplan for illustration purposes only.  
Actual example may vary. NOT TO SCALE. All measurements of rooms,  
doorways and windows are approximate for identification purposes only.

Frank Harris & Co. Barbican and City

87 Long Lane, London,

EC1A 9ET

020 7601 1919

citylettings@frankharris.co.uk

Energy Rating: C. We aim to make our particulars both accurate and reliable. However they are not guaranteed; nor do they form part of an offer or contract. If you require clarification on any points then please contact us, especially if you're traveling some distance to view. Please note that appliances and heating systems have not been tested and therefore no warranties can be given as to their good working order.

