



Goldstone Crescent, BN3
£1,200,000

ASTON
VAUGHAN

INTRODUCING

Goldstone Crescent, BN3

4 Bedrooms | 3 Bathroom | 2 Reception Rooms

Directly opposite the expansive green spaces of Hove Park and ideally positioned just an 8-minute drive from the beach and 11 minutes from the breathtaking Devil's Dyke, this substantial detached family home on the highly sought-after Goldstone Crescent offers the perfect balance of coastal living, outdoor lifestyle and excellent connectivity.

With both Hove railway station just 5 minutes away and Preston Park railway station reachable in around 8 minutes, London is accessible in approximately one hour, making this an exceptional choice for commuters and families alike.

Extending to approximately 2,195 sq ft, including the integral garage, the property provides generous proportions and versatile living spaces ideally suited to modern family life.

Upon entering, you are welcomed by a warm and inviting atmosphere that flows throughout the home. The spacious dual-aspect living room is a particular highlight, featuring an elegant curved bay frontage and wonderful views towards Hove Park, allowing natural light to pour into the room and creating a superb setting for both relaxing and entertaining.

At the heart of the home is the beautifully designed open-plan kitchen and dining room, perfectly tailored for contemporary living. The kitchen is fitted with modern cabinetry and ample workspace and storage, while the adjoining dining area creates a sociable environment ideal for family meals and hosting guests alike.



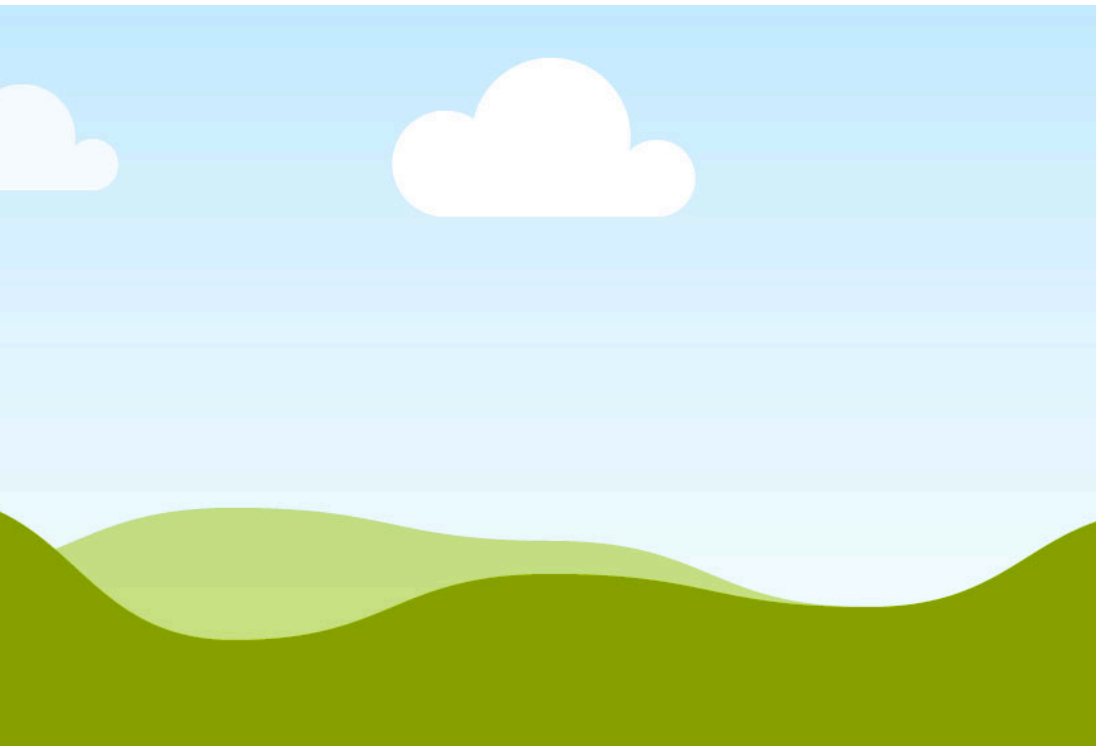




Adding further flexibility is the bright conservatory overlooking the private rear garden, providing an additional reception area that works equally well as a sunroom, playroom or peaceful retreat.

The first floor offers four well-proportioned double bedrooms, many enjoying attractive outlooks towards the park, together with two bathrooms serving the accommodation with practicality and style.

The property also benefits from excellent storage throughout, alongside an integral garage offering secure parking or additional utility space. Outside, the private garden provides an ideal setting for outdoor dining, entertaining and family activities.









Goldstone Crescent

Education:

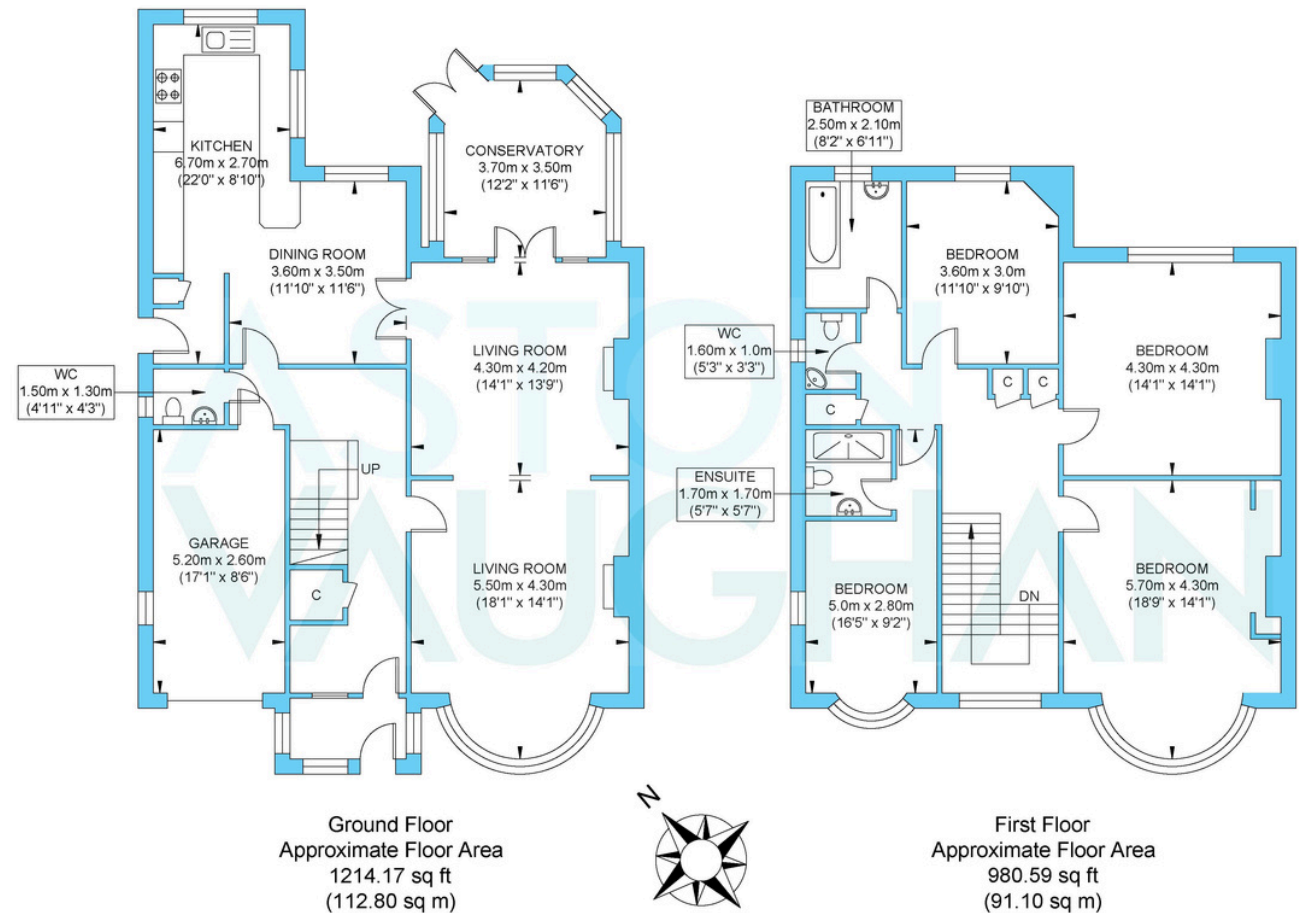
Primary: Aldrington Church of England, Bilingual Primary School, Cottesmore St Mary's Catholic School, Westdene Primary School

Secondary: Hove Park, Blatchington Mill, Cardinal Newman RC

Private: Lancing Prep, Windlesham Prep, St Christopher's Prep School, Brighton College, Hurstpierpoint College

Good to Know:

Situated in the sought-after Hove Park area, Goldstone Crescent presents a beautifully extended and refurbished detached four-bedroom family home, perfectly blending modern open-plan living with cosy comfort. Set back on a generous plot, the property offers ample driveway parking and a garage. Inside, a stunning open-plan kitchen/dining/ living space with high-spec integrated appliances, breakfast bar, and hidden utility room opens onto a well-maintained rear garden through large sliding doors. A separate snug and downstairs WC complete the ground floor. Upstairs are four spacious double bedrooms, including a principal ensuite, plus a modern family bathroom, all moments from Hove Park and excellent schools



Approximate Gross Internal (Including Garage) Area = 203.90 sq m / 2194.76 sq ft
 Illustration for identification purposes only, measurements are approximate, not to scale.