

CHARMILL

RESIDENTIAL

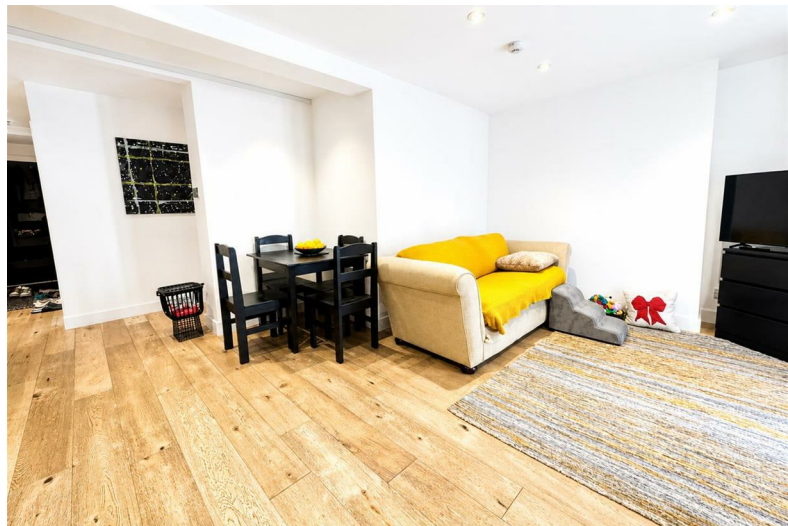


Warwick Avenue, Maida Vale W9

£646 Per week



Warwick Avenue



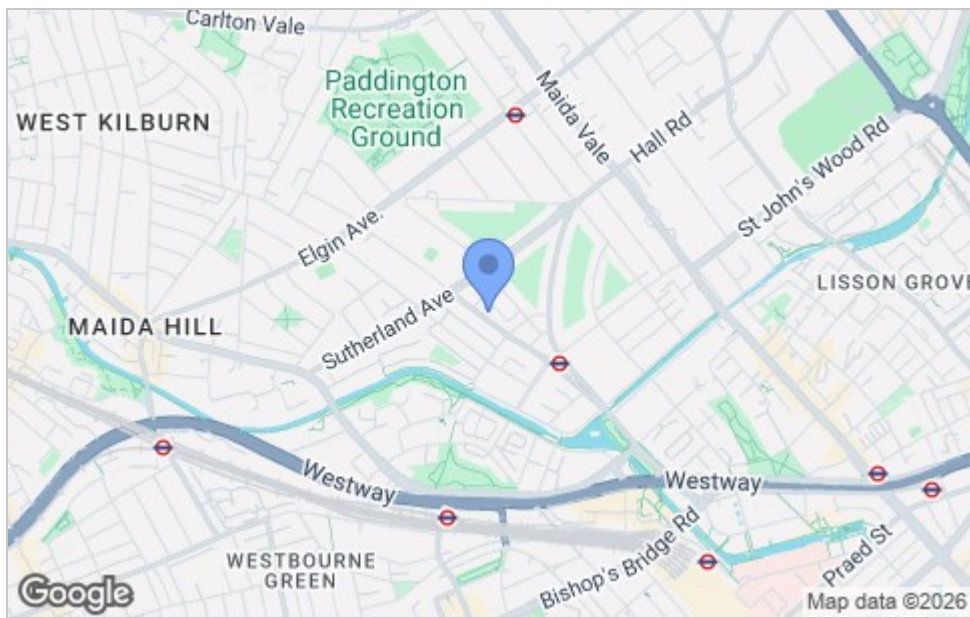
Description

A beautifully presented two double bedroom garden flat situated on the highly desirable Warwick Avenue, moments from Warwick Avenue Underground Station. This bright and spacious unfurnished property has been modernised to a high standard throughout and benefits from high ceilings, large unobstructed windows allowing an abundance of natural light, and contemporary finishes. The accommodation comprises a generous reception room with patio doors leading directly onto a private patio and garden, a fully fitted modern kitchen with granite worktops and integrated appliances, two well-proportioned double bedrooms, and a luxury fully tiled bathroom. Further benefits include engineered laminate flooring throughout and an excellent location close to local amenities, cafes, and transport links.





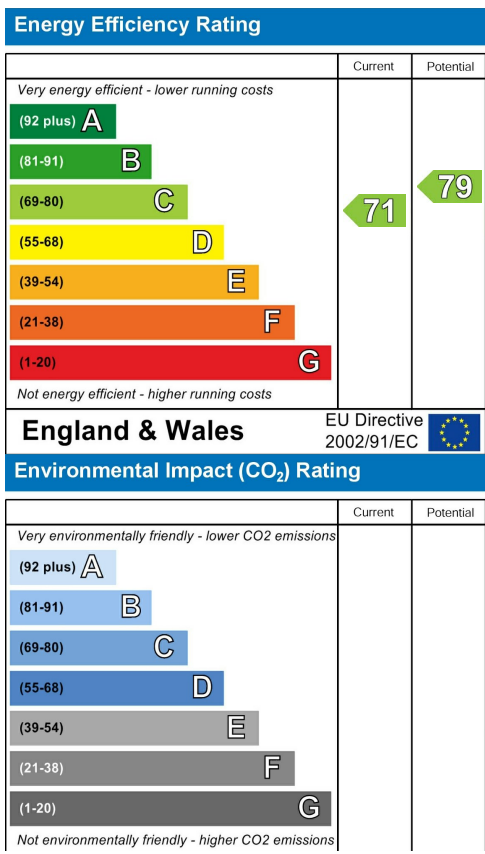
Area Map



Viewing

Please contact us on 020 7046 6276 if you wish to arrange a viewing appointment for this property or require further information.

Energy Efficiency Graph



These particulars, whilst believed to be accurate are set out as a general outline only for guidance and do not constitute any part of an offer or contract. Intending purchasers should not rely on them as statements of representation of fact, but must satisfy themselves by inspection or otherwise as to their accuracy. No person in this firm's employment has the authority to make or give any representation or warranty in respect of the property.

020 7046 6276 • lettings@charmillresidential.co.uk • 51 Maida Vale, Little Venice, London W9 1SD
charmillresidential.co.uk