



Lounge

To the front of the bungalow sits a bright and inviting bay-fronted lounge. This space benefits from natural light streaming through the bay window, creating a pleasant and comfortable setting for relaxation. There is ample room for a variety of furniture arrangements, making it a flexible living area suitable for both quiet evenings and entertaining guests.

Bedroom Two

To the right-hand side of the hallway, you will find a well-proportioned double bedroom. This room offers generous space for bedroom furnishings and could easily serve as a comfortable guest room or additional sleeping accommodation. Its position within the home ensures a degree of privacy, making it a peaceful retreat.

Master Bedroom & Ensuite

Moving further through the property, the principal bedroom is located towards the rear. This spacious master bedroom enjoys a quieter aspect overlooking the garden and benefits from its own en-suite shower room, adding a level of convenience and comfort. The room itself provides plenty of space for wardrobes and additional furnishings, making it a practical and relaxing main bedroom.

Outside

Externally, the property continues to impress with its outdoor space. The rear garden is arranged over tiers, with steps leading up to a patio area. This creates an ideal spot for outdoor seating and entertaining during warmer months. The garden also features planted borders with a variety of shrubs, offering both colour and privacy. With a little care and attention, this outdoor space could be transformed into a delightful garden retreat.

To the front of the property, there is the added benefit of driveway parking, providing off-road space for vehicles-an increasingly valuable feature in residential locations such as this.

Property Description

Set within a popular and well-established residential area of Paignton, this charming two/three-bedroom bungalow presents a rare opportunity for buyers looking to create a home tailored to their own tastes. Having been lovingly owned and cared for over many years, the property now offers excellent potential for modernisation and improvement, making it an ideal project for first-time buyers, downsizers, or investors seeking a rewarding transformation.

The location is particularly appealing, with convenient access to a range of local shops, everyday amenities, and excellent transport links, ensuring ease of living and connectivity to surrounding areas. Despite its need for some updating, the home already possesses a warm and welcoming feel, with a layout that is both practical and versatile. Whether you are taking your first step onto the property ladder, looking to downsize, or seeking a project with rewarding potential, this home is well worth considering. With the right vision and a touch of creativity, it could become a truly special place to live.

On Entrance

Upon entering the property, you are greeted by a central hallway that provides access to the main living accommodation.



Dining Room / Third Bedroom

Adjacent to the master bedroom is a further versatile room, which could be used either as a third bedroom or as a dining room, depending on the needs of the new owner. This flexibility allows the property to adapt to a variety of lifestyles, whether you require additional sleeping space, a formal dining area, or even a hobby room.

Study Area & Inner Hallway

Continuing along, there is a study area situated within the inner hallway. This space is ideal for those who work from home or require a dedicated area for reading or administrative tasks.

Shower Room

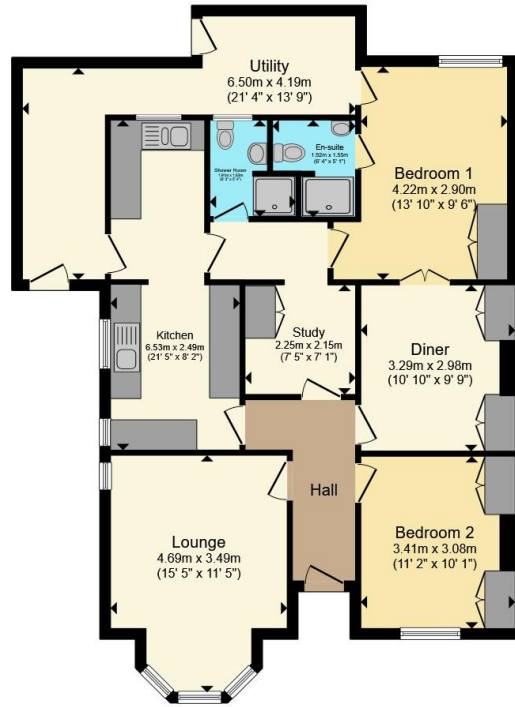
It also provides access to a separate shower room, which is a useful addition for a property of this size, particularly when accommodating guests or multiple occupants.

Kitchen & Utility

The kitchen is located towards the rear of the bungalow and offers a functional layout with scope for improvement. While it may benefit from modernisation, it provides a solid foundation for creating a contemporary cooking space tailored to personal preferences. A door from the kitchen leads through to a utility area, offering additional storage and laundry facilities. From here, there is direct access to the outside, enhancing practicality for day-to-day living.







Floor Plan

Total floor area 99.4 m² (1,070 sq.ft.) approx

This floor plan is for illustrative purposes only. It is not drawn to scale. Any measurements, floor areas (including any total floor area), openings and orientation are approximate. No details are guaranteed, they cannot be relied upon for any purpose and they do not form part of any agreement. No liability is taken for any error, omission or misstatement. A party must rely upon its own inspection(s). Powered by www.propertybox.io

Connells

To view this property please contact Connells on

T 01803 400 888
E paignton@connells.co.uk

51 Hyde Road
PAIGNTON TQ4 5BP





check out more properties at [connells.co.uk](https://www.connells.co.uk)

EPC Rating: C Council Tax
Band: C

Tenure: Freehold

1. MONEY LAUNDERING REGULATIONS Intending purchasers will be asked to produce identification documentation at a later stage and we would ask for your co-operation in order that there will be no delay in agreeing the sale. 2. These particulars do not constitute part or all of an offer or contract. 3. The measurements indicated are supplied for guidance only and as such must be considered incorrect. Potential buyers are advised to recheck measurements before committing to any expense. 4. We have not tested any apparatus, equipment, fixtures, fittings or services and it is in the buyers interest to check the working condition of any appliances.

Connells Residential is registered in England and Wales under company number 1489613, Registered Office is Cumbria House, 16-20 Hockliffe Street, Leighton Buzzard, Bedfordshire, LU7 1GN. VAT Registration Number is 500 2481 05.

