

St. John Street, EC1V

£5,500 Per calendar month

A unique and spacious warehouse conversion set within the former Scholl Manufacturing Company.

This impressive two double bedroom apartment has wooden floors in the living areas and a large living/dining room, a study/office with access to a private balcony.

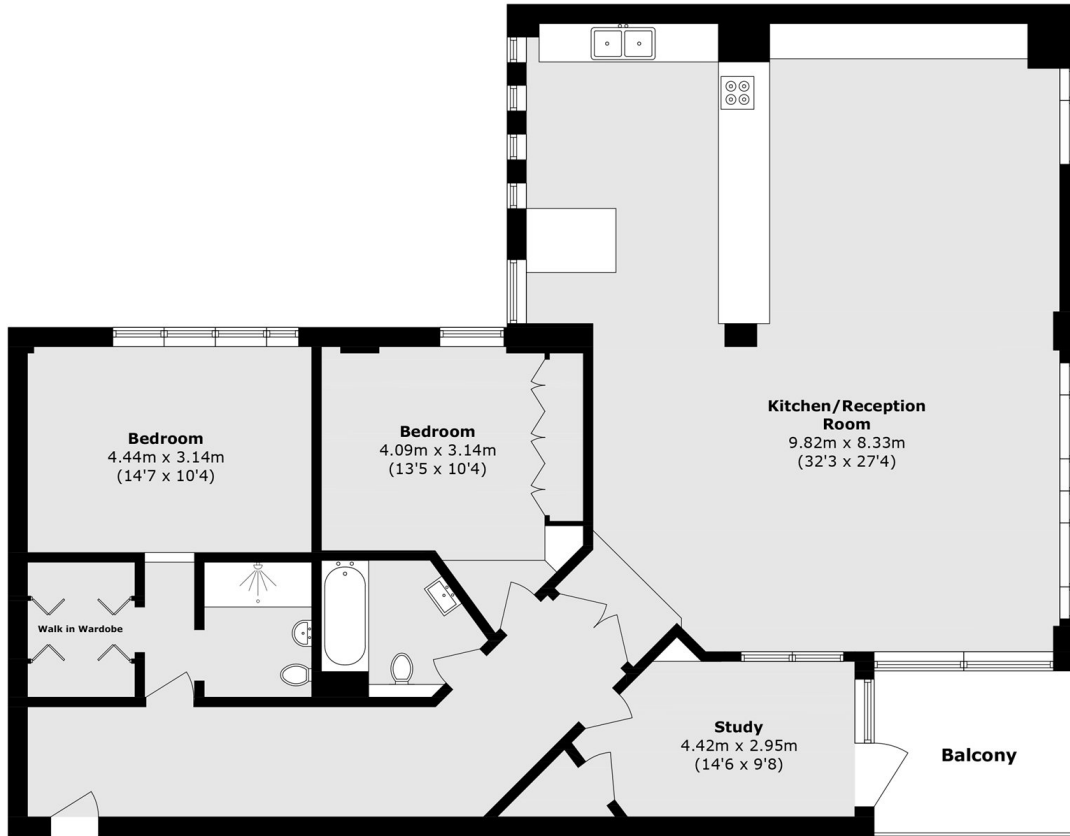
The property is set back in the building and the master bedroom has a walk in wardrobe, en suite bathroom and lots of storage. The apartment has an abundance of storage throughout and great natural light.

Located on St. John Street, 0.4 miles to Farringdon Underground, 0.6 mile to Angel Underground and 0.6 miles to Barbican Underground. Walking distance to the famous Exmouth market where you have lots of independent, restaurants, bars and coffee shops.

Features

- Two Bedrooms
- Two Bathrooms
- Warehouse Conversion
- Additional Study
- Private Balcony
- 152.2 sqm / 1,638.2 sqft

St. John Street, London, EC1V



First Floor

Total area (approx.): 152.2 sq. m (1638.2 sq. ft)
Balcony area (approx.): 7.7 sq m (82.8 sq. ft)