



Bishops Grove, Windlesham

**£900,000**





## Bishops Grove, Windlesham, Surrey, GU20 6QQ

This extended and modernised executive family home is located on the popular Windmill Field development in Windlesham just a short walk from village shops and the Field of Remembrance playing fields.

### FEATURES

- Detached
- 1710 sq. ft including garage
- Gas central heating
- Double glazing
- One garage converted into bedroom en-suite
- West facing rear garden
- Modern replacement kitchen and bathrooms
- Scope to extend further subject to planning perm.

### ACCOMMODATION

- Entrance hall
- Downstairs cloakroom
- Three reception rooms
- Kitchen/breakfast room with island
- Utility room
- Sitting room
- Dining room
- Study
- Ground floor en-suite bedroom/reception room
- Four first floor bedrooms
- Three bath/shower rooms

### OUTSIDE

- Single garage
- Driveway parking
- Rear garden with patio

### EPC RATING

C

### LOCAL AUTHORITY/COUNCIL TAX

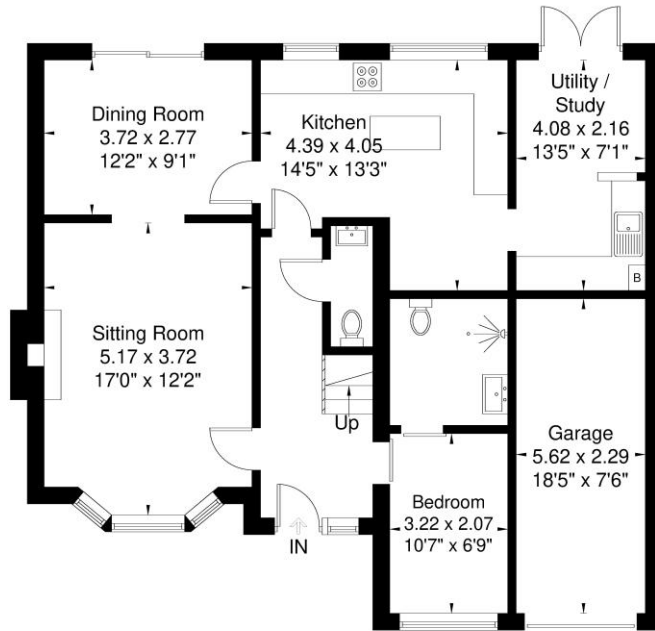
Surrey Heath – Band G



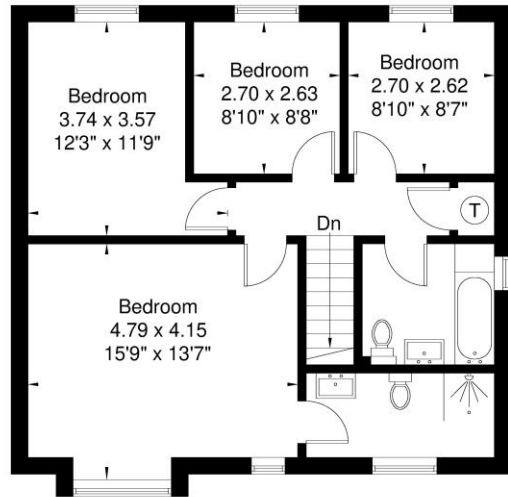


### Bishops Grove

Approximate Gross Internal Area = 158.9 sq m / 1710 sq ft



Ground Floor



First Floor

Illustration for identification purposes only, measurements are approximate, not to scale.

**Disclaimer:** We wish to inform prospective purchasers that we have prepared these sales particulars as a general guide. We have not carried out a detailed survey, nor tested the services, appliances and specific fittings. Room sizes are approximate and rounded: they are taken between internal wall surfaces and therefore include cupboards / shelves, etc. Accordingly, they should not be relied upon for carpeting, curtains / blinds and kitchen equipment, whether fitted or not, are deemed removable by the vendor unless specifically itemized within these.

Postcode for sat nav: **GU20 6QQ**



**NEWTON ROWE**  
SALES & LETTINGS

The Old Dairy, 7 Updown Hill, Windlesham, Surrey GU20 6AF  
enquiries@newtonrowe.co.uk | 01276 986900