



11 Ansdell Road, Bentley

Guide Price £110,000 – £115,000

11 Ansdell Road

Bentley, Doncaster

Charming end-terrace period home with 2 bedrooms, modern kitchen, flexible loft room, low-maintenance garden, and no upward chain. Close to amenities and transport. Ideal for easy, comfortable living.

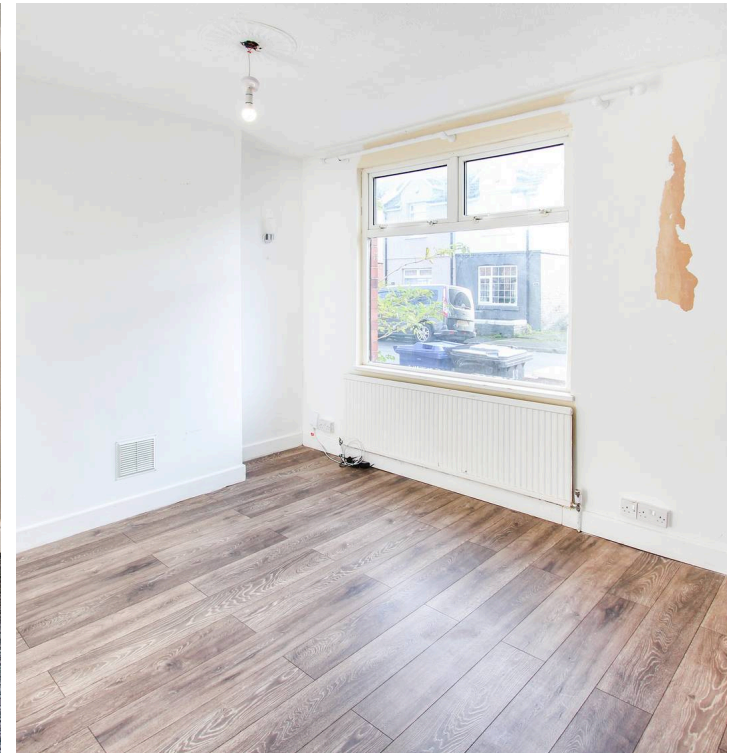
Council Tax band: A

Tenure: Freehold

EPC Energy Efficiency Rating: E

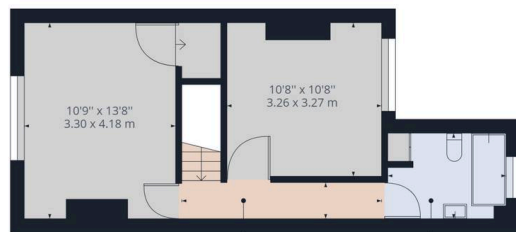
EPC Environmental Impact Rating: E

- End-of-terrace position
- Attractive period features
- Modern kitchen with integrated oven
- Open plan living area
- Large windows for abundant natural light
- Modern bathroom with bath and heated towel rail
- Occasional loft room
- Private low-maintenance outdoor space
- Offered With no Upward chain
- Close to Local amenities





Ground Floor



Landing
13'7" x 2'9"
4.16 x 0.84 m

Bathroom
8'4" x 6'5"
2.56 x 1.97 m

Floor 1

Approximate total area⁽¹⁾
770.69 ft²
71.60 m²

(1) Excluding balconies and terraces

While every attempt has been made to ensure accuracy, all measurements are approximate, not to scale. This floor plan is for illustrative purposes only.

GIRAFFE360



Aspire Estates

Aspire Properties, Wira Business Park Ring Road - LS16 6EB

0113 863 1446

estatesales@aspirepropertygroup.co.uk

www.aspirepropertygroup.co.uk/