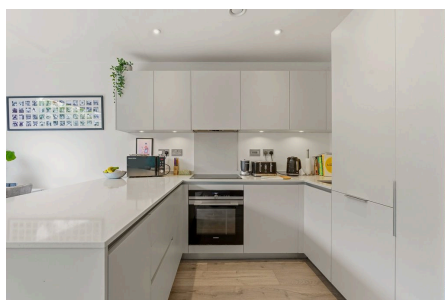


**Graveney Mews, Tooting, CR4**

Guide Price £650,000

3 2 1



PLEASE QUOTE MR0560 – GUIDE PRICE £650,000 - NO ONWARD CHAIN - Set within a secure modern gated development, this stunning three bedroom, two bathroom, freehold property (1,034.4 Sq.Ft) with allocated parking and delightful secluded private garden. Enjoying a quiet location, yet just a short walk from Tooting station and a array of vibrant amenities, the property offers bright and spacious split level accommodation, superbly appointed with stylish interiors and quality finish throughout. Flowing living space blends contemporary style and modern convenience, with features including an impressive open plan kitchen/reception/dining room, luxury first floor bathroom and principal en-suite, downstairs WC, under-floor heating, double glazing, CCTV, alarm system, and solar panels for increased energy efficiency.

### Key Features

- PLEASE QUOTE MR0560
- Stunning Three Bedroom Freehold Property (1,034.4)
- Sought After Gated Mews Location
- Luxury Finish and Stylish Interiors
- Light and Spacious Open Plan Reception/ Kitchen
- Two Bath/Shower Rooms (One En-Suite) plus Guest WC
- Secluded Private Garden and Allocated Parking Solar Panels
- Moments from Tooting Station
- Close to Shops and Amenities



Total area (approx.): 96.1 sq. m (1034.4 sq. ft)