



43 Rossefield Terrace Leeds



3 Bedroom House - Townhouse £195,000

69 Lower Wortley Road
Wortley
Leeds
West Yorkshire
LS12 4SL
Tel: 0113 231 1033
Fax: 0113 203 8333

Web Site
www.kathwells.com

email
sales@kathwells.com

43 Rossefield Terrace, Bramley, Leeds, West Yorkshire, LS13 3SD

GROUND FLOOR:

Entrance Vestibule:



Access via a part glazed entrance door, double glazed window, large storage area

Hallway:



Stairs rising to the first floor, central heating radiator, storage cupboard

Cloakroom / WC:



Double glazed window, a white suite comprising of a low flush WC and a wash basin

Living Room:



Double glazed patio doors opening onto the garden, central heating radiator, large storage cupboard, ample space for a range of living room furniture

Fitted Dining Kitchen:



Double glazed windows, a part glazed external door giving access to the garden, a range of fitted wall, drawer & base units, work surfaces, built under electric oven, electric hob with an extractor hood above, an inset sink and drainer, space for a fridge / freezer, plumbing for an automatic washing machine, ample space for a dining table & chairs and / or additional sitting room furniture

FIRST FLOOR:

Landing:



Double glazed window, access to the first floor accommodation, three storage cupboards,

Bedroom One:



Double glazed window, central heating radiator

Bedroom Two:



Double glazed window, central heating radiator

Bedroom Three:



Double glazed window, central heating radiator

Bathroom / WC:



Double glazed window, a modern white suite comprising of a panelled bath with a glazed side screen and a plumbed shower above, low flush WC and wash basin set into a vanity unit, ladder style central heating radiator / towel warmer

TO THE OUTSIDE:



Off Street Parking:



Off street parking for one car

Garden:



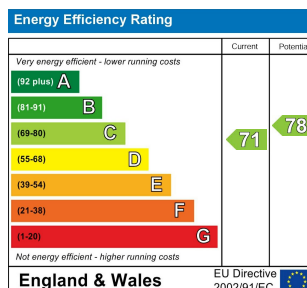
This property benefits from having a large garden with two lawned areas, planted beds and a paved patio area.

Council Tax Band & EPC Rating:

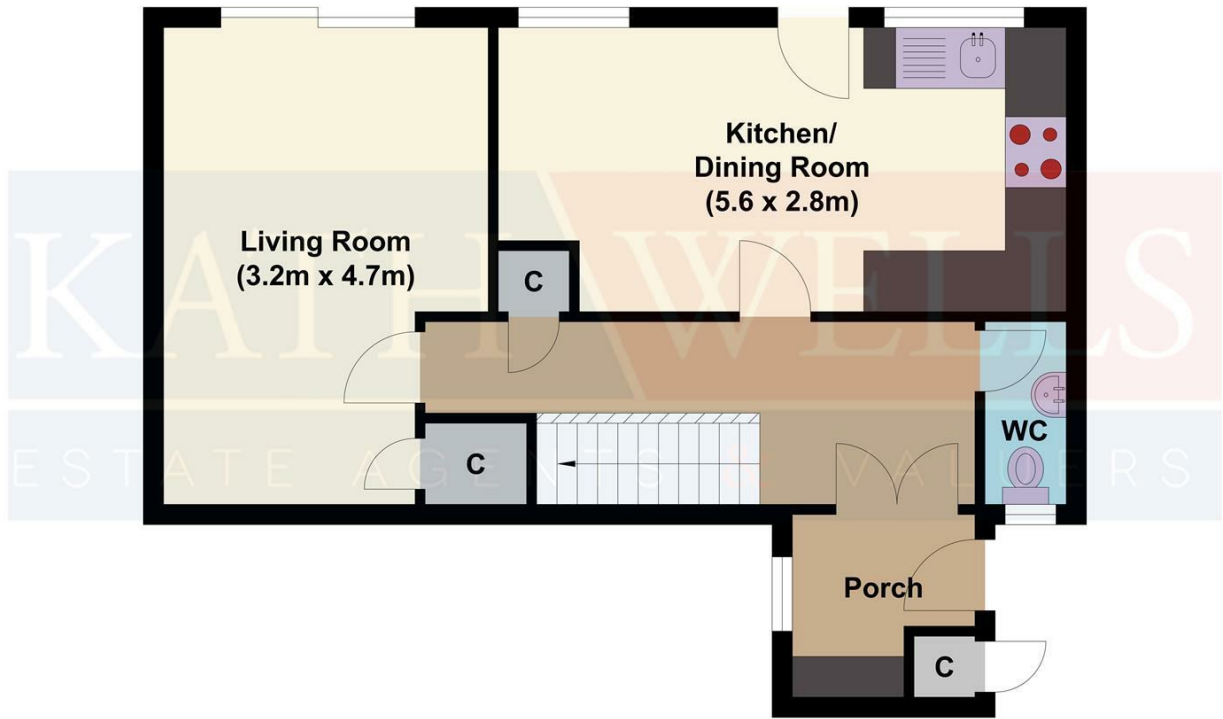
Council Tax Band: A / EPC Rating: C

EPC Link:

<https://find-energy-certificate.service.gov.uk/energy-certificate/0875-3957-5202-0885-1200>



Ground Floor



First Floor

