

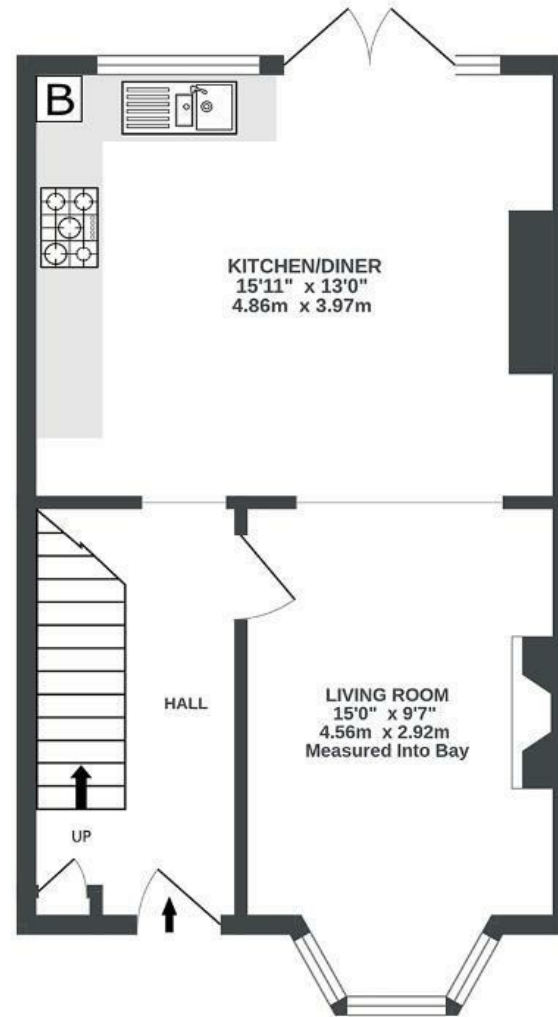


Co-Operation Road GREENBANK

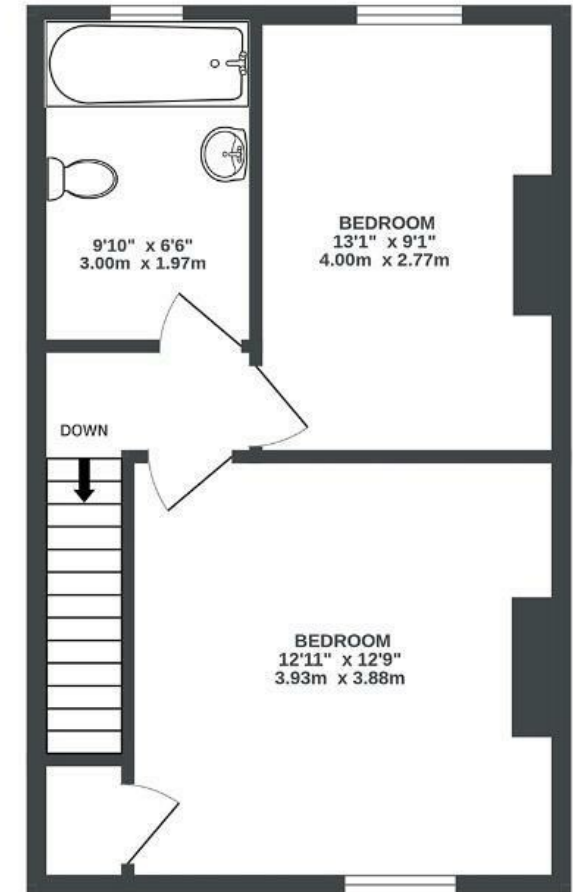
APPROXIMATE FLOOR AREA
74.4 SQM / 801 SQFT



GROUND FLOOR
407 sq.ft. (37.8 sq.m.) approx.



1ST FLOOR
394 sq.ft. (36.6 sq.m.) approx.



Boardwalk

Co-Operation

GREENBANK, BRISTOL



£425,000



2 Bedrooms



BS5 6EJ



1 Bathrooms

"We've loved living here. The kitchen-diner has always been the heart of the home, whether it's family meals, catching up with friends or opening the French doors onto the garden in the summer. In the winter, the sitting room with the wood-burning stove is wonderfully cosy, and throughout the house there's a real sense of warmth and light that has made it such an enjoyable place to call home."

