



## HEWETT STREET, EC2A

**£3,999 pcm**

This two-bedroom apartment is part of The Stage, a 37-storey luxury development in Shoreditch, East London, with interiors by Nicola Fontanella of Argent Design and bespoke management by Rhodium.

- Two Bedrooms
- Thirty Second Floor roof garden
- Furnished Premium Furniture
- 24/7 Concierge
- Cinema Room
- Gym

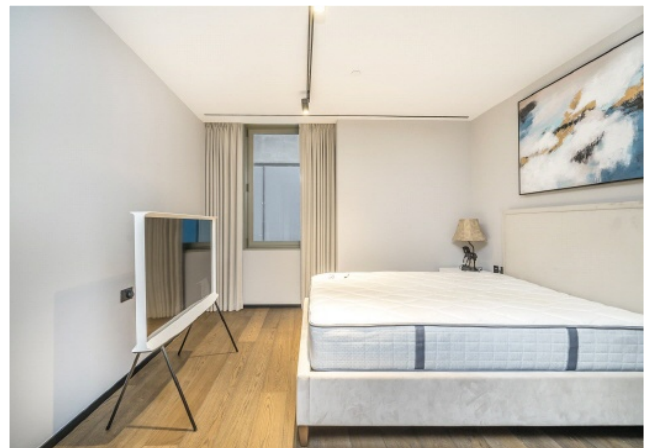




## ABOUT THE HOME

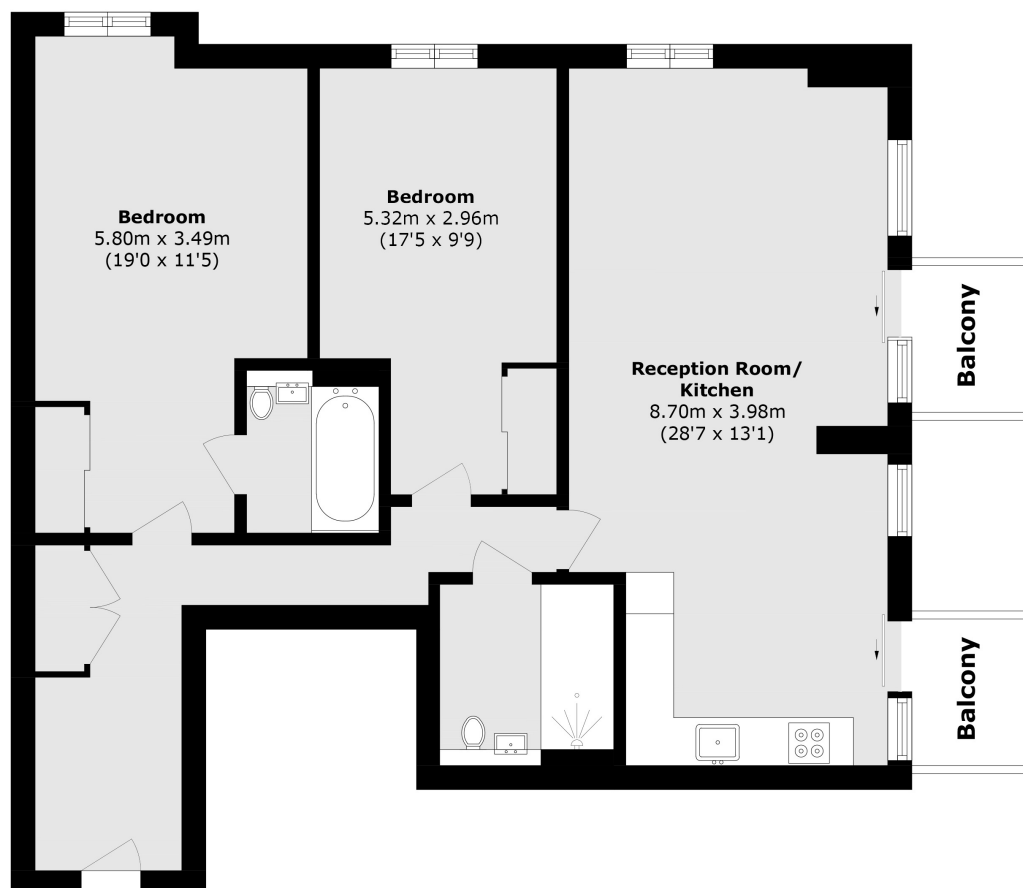
The apartment is located near Michelin-starred restaurants, Spitalfields Market, and Shoreditch's cultural and creative attractions. The development incorporates the remains of Shakespeare's Curtain Theatre (1577) and is planned as a future cultural landmark.

Liverpool Street Station is a five-minute walk, providing Underground, rail, and Overground connections across London. The Stage is also close to major universities and London's tech district, adjacent to the new Amazon HQ.









Total area (approx.): 89.2 sq. m (960.1 sq. ft)

Balcony area (approx.): 2.65 sq. m (28.5 sq. ft)

**LiFE RESIDENTIAL**

71 Drayton Park, London, N5

1BF

Sales: 020 3838 8666

Lettings: 020 7359 4488

Energy Rating: B. We aim to make our particulars both accurate and reliable. However they are not guaranteed; nor do they form part of an offer or contract. If you require clarification on any points then please contact us, especially if you're traveling some distance to view. Please note that appliances and heating systems have not been tested and therefore no warranties can be given as to their good working order.